

Smith Meter™ Mechanical Set-Stop Valves are used when automatic, predetermined shut-off of liquid is required. They mount directly on Smith Meter™ rotary vane PD meters and work in conjunction with the Smith Meter™ 300C Mechanical Set-Stop Counter for two stage batch control.

Features

- **Easy Installation** - No external power or air required.
- **Two-Speed Closure** - Prior to final closure, the flow rate is reduced to prevent line shock and provide precise closure.
- **Closing Speed Control** - Field adjustable to minimize hydraulic line shock.

Options

- **Seals** - Buna N (standard); Viton (optional).
- **Tie Rod Extensions** - For operation with a set-stop counter, mounted on a rigid extension (up to 10').

Applications

Set-Stop Counters - 300C Series.

Valve linkage adaptor required to link set-stop valve to counter.

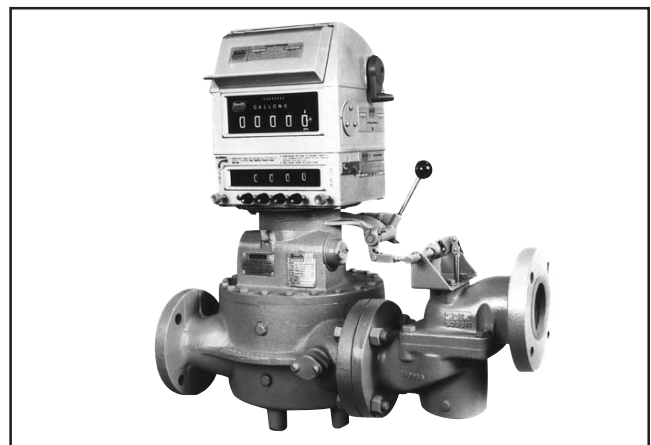
Meters - Smith Meter™ rotary vane PD meters as designated in the selection guide.



Offset Type



Straight-Through Type



3" Meter with Offset Type Mechanical Set-Stop Valve

Valve Selection Guide for Smith Meter™ PD Meters

Housing Material	Flange Type / Pressure Rating	Valve Size / Maximum Flow			
		2"	3"	4"	6" ¹
		150 GPM (570 L/min)	500 GPM (1,900 L/min)	800 GPM (3,030 L/min)	1,000 GPM (3,750 L/min)
Offset Type					
Ductile Iron	Class 150 RF / 150 psi max. @ 100° F	SC-13DI, C2-S1	SD-30DI, SD3-S1, E3-S1, A1	N/A	N/A
Straight-Through Type					
Steel	Class 150 RF / 275 psi max. @ 100° F	C2-S1, S3	SD-3-S1 E3-S1, A1 E3-S3, A3	E4-S1, A1 F4-S1, A1,V1 ² F4-S3, A3	G6-S1, A1, V1 ² G6-S3, A3
Steel	Class 300 RF ¹				

Specifications

Type and Size	End Connections ³	Housing Material	Pressure - psi (kPa) ⁴
Straight-Through			
2" - 6"	Class 150 ANSI B16.5 Raised-Face Flanges	Steel	275 (1,896)
Offset			
2" & 3"	Class 150 ANSI B16.42 Raised-Face or Flat-Face Flanges	Ductile Iron	150 (1,034)

Internals

2" and 3": Iron, steel, Ni-resist, stainless steel.
4" and 6": Cast iron, Ni-resist, bronze⁵, stainless steel.

Seals/Temperature

Standard:

Buna Seals: -20°F to 225°F (-29°C to 108°C).

Optional:

Viton Seals: 10°F to 400°F (-12°C to 205°C).

Maximum Viscosity

Standard:

Offset Type: 200 SSU (40 mPa·s).

Straight-Through Type: 2,000 SSU (400 mPa·s).

¹ Consult factory for availability.

² When used with V1 (vertical meters), an 18" rigid extension and tie rod extension kit must be used to allow clearance for the valve below the set-stop counter.

³ DIN Flanges available - consult factory.

⁴ Maximum working pressures are for temperatures of -20°F to 100°F (-28°C to 38°C). Consult factory for maximum working pressures at other temperatures.

⁵ All-iron trim models consist of cast iron in lieu of bronze.

Revisions included in SS01103 Issue/Rev. 0.1 (2/03):

Page 1-2: Removed reference to High Viscosity Option.

The specifications contained herein are subject to change without notice and any user of said specifications should verify from the manufacturer that the specifications are currently in effect. Otherwise, the manufacturer assumes no responsibility for the use of specifications which may have been changed and are no longer in effect.

Headquarters:

1803 Gears Road, Houston, TX 77067 USA, Phone: 281/260-2190, Fax: 281/260-2191

Gas Measurement Products:

Houston, TX USA Phone 281/260-2190
Thetford, England Phone (44) 1842-82-2900
Kongsberg, Norway Phone (47) 32/286-700
Buenos Aires, Argentina Phone 54 (11) 4312-4736

Integrated Measurement Systems:

Corpus Christi, TX USA Phone 361/289-3400
Kongsberg, Norway Phone (47) 32/286-700
San Juan, Puerto Rico Phone 787/274-3760
United Arab Emirates, Dubai Phone 971 +4/331-3646

Visit our website at www.fmctechnologies.com

Liquid Measurement Products:

Erie, PA USA Phone 814/898-5000
Los Angeles, CA USA Phone 661/702-8660
Slough, England Phone (44) 1753-57-1515
Ellerbek, Germany Phone (49) 4101-3040
Barcelona, Spain Phone (34) 93/201-0989
Moscow, Russia Phone (7) 495/564-8705
Melbourne, Australia Phone (61) 3/9807-2818

Beijing, China Phone (86) 10/6500-2251
Singapore Phone (65) 6861-3011
Chennai, India Phone (91) 44/450-4400