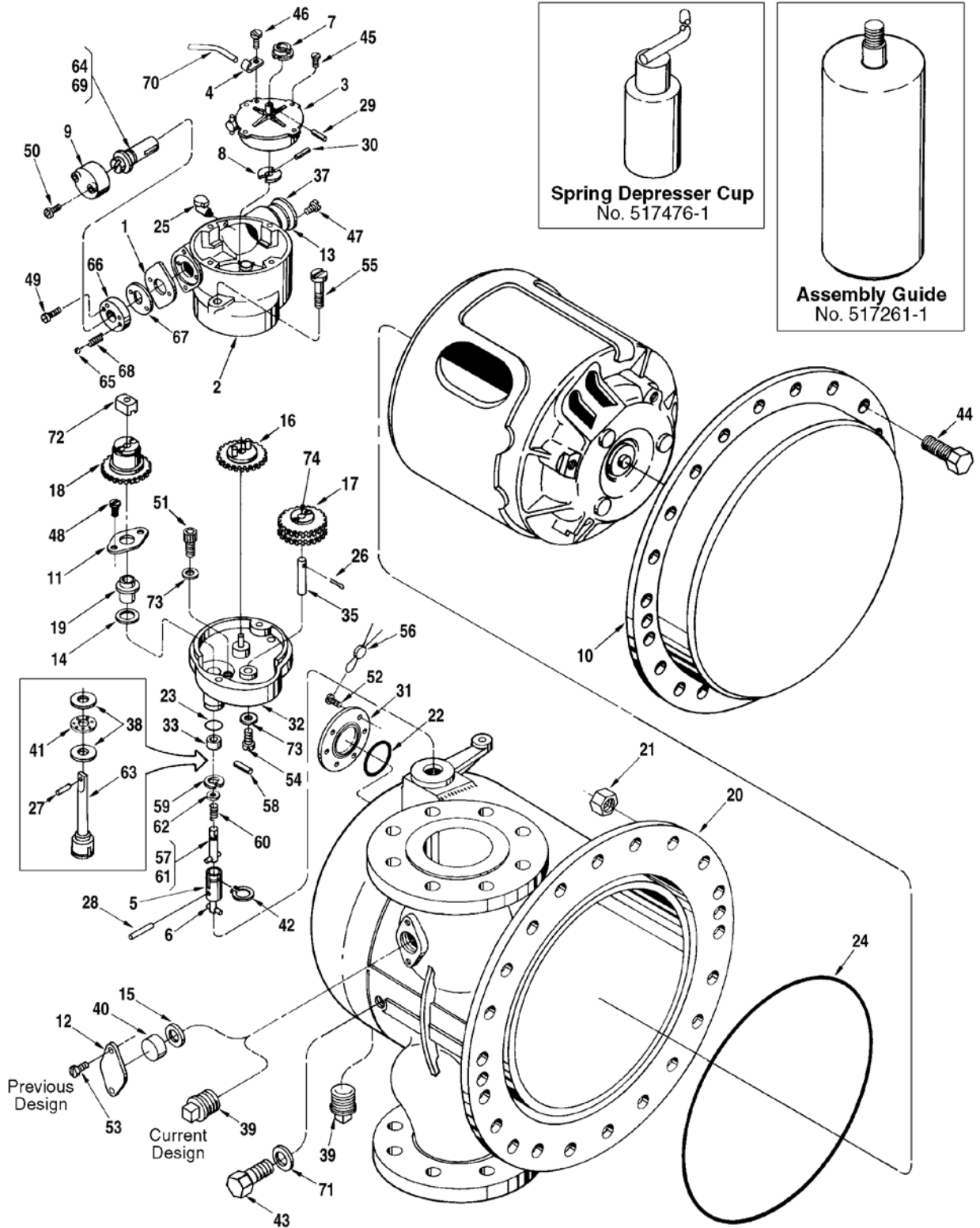


Smith Meter® PD Meter
**Meter, PD Series,
 F4 – V1, VA1**

Parts List Bulletin PO01013 || Issue/Rev 0.0 (9/13)



Item	Description	Qty.	Part Number
1	Adapter, Calibrator Adjusting Stem	1	512372-001
2	Adapter, Counter	1	517052-001
3	+ Calibrator:		
	Standard	1	512059-001
	Temperature Corrected (Standard).....	1	512060-001
@1	Temperature Corrected (Special Temperature or API).....	1	516130-xxx
	Dummy Calibrator	1	516105-001
4	Clamp, Oil Tube.....	1	003905-001
5	Coupling	1	517061-001
6	Pin.....	1	642439-404
7	+ Coupling, Drive.....	1	072103-001
8	Coupling, Input	1	014356-001
9	Cover, Knob.....	1	003553-001
10	Cover, Outer Housing.....	1	517053-091
11	Flange, Packing Gland	1	010171-001
12	Flange, Temperature Well Plug - Previous Design.....	1	011941-001
13	Gasket, Cover Plate	1	003834-001
14	+ Gasket, Packing Gland.....	1	010173-001
15	Gasket, Temperature Well - Previous Design	1	060341-001
16	+ Gear, Calibrator Drive:		
	U.S. Gallons, F4-V1 and F4-VA1	1	008248-001
	Imperial Gallons, F4-V1 and F4-VA1	1	071007-001
	Dekalitres, F4-V1 and F4-VA1	1	070728-001
17	+ Gear, Jackshaft, F4-VA1 Only	1	008250-001
18	+ Gear, Single:		
	U.S. Gallons, F4-V1 Only	1	008249-002
	U.S. Gallons, F4-VA1 Only	1	008249-001
	Dekalitres, F4-V1 and F4-VA1	1	072056-002
19	+ Gland, Packing:		
	Buna-N.....	1	518630-001
	Viton.....	1	518630-002
	Brass.....	1	008934-002
20	Housing:		
	F4-V1	1	517056-001
	F4-VA1	1	Consult Factory
21	Nut, Cover, 9/16"-12 UNC-2B	20	642138-401
22	+ O-Ring, Access Plate:		
	Buna-N.....	1	009902-400
	Viton.....	1	640894-439
	EPR	1	641560-438
23	+ O-Ring, Base Plate:		
	Buna-N.....	1	640888-004
	Viton.....	1	640894-406
	EPR	1	641560-404
24	+ O-Ring, Cover:		
	Buna-N.....	1	512140-001
	Viton.....	1	512140-002
	PTFE ¹	1	645842-401
	EPR	1	512140-003
25	Oiler.....	1	006588-001
26	Pin, Cotter, 1/16 x 1/2", F4-VA1 Only	1	001095-401
27	Pin, Cotter, 1/16 x 5/8"	1	641042-401
28	Pin, Groove, 1/16 x 1/5"	1	006054-002
29	Pin, Groove, 1/16 x 5/8"	1	006028-002
30	Pin, Groove, 5/64 x 1/2"	1	006053-002
31	Plate, Access.....	1	517051-001

1 Polytetrafluoroethylene (PTFE).

Item	Description	Qty.	Part Number
32	Plate, Base:		
	F4-V1	1	517054-001
	F4-VA1	1	Consult Factory
33	Bushing	1	519882-002
34	* Shaft, Calibrator Drive Gear.....	1	003775-001
35	Shaft, Idle Gear, F4-VA1 Only.....	1	512077-001
36	* Plate, Caution.....	1	006571-001
37	Plate, Cover.....	1	003440-001
38	Plate, Thrust Bearing.....	2	001111-001
39	Plug, Pipe	2	006505-002
40	Plug, Temperature Well	1	012025-001
41	Retainer and Balls	1	070360-001
42	Ring, Retaining.....	1	009691-400
43	Screw, Inner mechanism, 1/2-13 x 1-3/4"	2	006169-002
44	Screw, Cover, 9/16-12 x 1-3/4".....	20	640975-401
45	Screw, Calibrator, #6-32 x 5/16"	2	006048-002
46	Screw, Oil Tube Clamp, #8-32 x 3/16".....	2	006449-001
47	Screw, Cover Plate, #10-32 x 3/8".....	2	006045-002
48	Screw, Packing Gland Flange, #10-32 x 1/2"	2	006764-002
49	Screw, Base Plate, #10-32 x 7/8"	2	640835-001
50	Screw, Knob Cover, #10-24 x 3/4", Drilled	2	006481-003
51	Screw, Base Plate, 5/16-18 x 3/4"	2	006409-002
52	Screw, Access Plate, 5/16-18 x 7/8", Drilled.....	6	009563-401
53	Screw, Temperature Well Plug Flange, 5/16-18 x 7/8"	2	009563-400
54	Screw, Base Plate:		
	5/16-18 x 1"	1	060133-002
	5/16-18 x 1", Drilled	1	065075-003
55	Screw, Counter Adapter, 5/16-18 x 2"	1	642019-415
56	+ Seal, Lead and Wire.....	2	001627-400
57	Shaft, Link Assembly	1	517063-001
58	Pin.....	2	640780-001
59	Ring, Snap	1	006076-400
60	Spring	1	518113-001
61	Shaft	1	517064-001
62	Washer.....	1	517065-001
63	Shaft, Upper Jack.....	1	512116-001
64	Stem Assembly, Adjusting	1	009838-001
65	Ball.....	2	006427-001
66	Plate, Base	1	003552-001
67	Plate, Retainer	1	003556-001
68	Spring, Knob.....	2	003557-001
69	Stem, Adjusting.....	1	003551-001
70	Tube, Oil.....	1	514658-001
71	Washer, 1-1/16" O.D. x 17/32" I.D.....	2	065309-002
72	Washer, Jackshaft.....	1	001125-001
73	Washer, Lock, 5/16"	3	642482-407
74	Washer, Pinion, F4-VA1 Only.....	1	003599-001

Inner Mechanism

Item	Description	Qty.	Part Number
75	+ Bearing, Thrust.....	1	641920-401
76	Block	1	517085-002
77	Body	1	511997-001
78	Cover, Inner Housing.....	1	517081-001
79	+ Bushing:		
	Standard and All Iron.....	2	519882-001
	LPG	2	512796-001
80	Dowel, Locating Arm	1	512115-001
81	Block, Gear and Bearing	1	517083-001
82	+ Bearing, Thrust	1	641920-401
83	Block, Bearing.....	1	517079-001
84	Bushing.....	2	519882-001
85	Coupling.....	1	512064-002
86	Gear	1	517070-001
87	Pin, Groove, 5/64 x 3/4".....	2	006320-002
88	Ring, Snap	1	006076-400
89	Shaft	1	517084-001
90	Washer.....	1	517065-001
91	Gear, Jackshaft	1	517076-001
92	Gear, Meter	1	517070-001
93	Lug, Lifting.....	2	512002-001
94	Pin, Groove, 3/16 x 3/4"	2	007900-400
95	Pin, Groove, 5/64 x 3/4"	1	006320-002
96	Plate	1	512714-001
97	Ring, Retaining.....	1	064150-001
98	Rotor and Blade Assembly	1	517769-001
99	Arm, Locating.....	1	511945-001
100	Ball	1	006467-400
101	+ Bearing, Rotor:		
	Standard and All Iron	1	006523-001
	LPG	1	644412-407
102	+ Bearing, Rotor:		
	Standard and All Iron	1	516109-001
	LPG	1	516109-002
103	Blade, Upper and Lower:		
	Standard	2	517073-001
	LPG	2	517073-002
	All Iron.....	2	009441-042
104	+ Bearing, Blade:		
	Standard and All Iron.....	2	065109-001
	LPG.....	2	644412-402
105	Pin, Cotter, 3/32 x 1".....	2	006308-001
106	Shaft, Blade Bearing.....	2	003449-001
107	Cam and Shaft Assembly	1	517078-001
108	Cam.....	1	517019-001
109	Key	1	005535-800
110	Shaft.....	1	517080-001
111	Clamp, Roller	8	011226-001
112	Collar, Thrust	1	517069-001
113	Key	1	512715-001
114	Pin, Thrust Collar	1	008251-001
115	Plate Assembly, Rotor Gear.....	1	512112-002
116	Ring, Spirolock.....	1	643064-401
117	Rotor	1	008253-091

Item	Description	Qty.	Part Number
118	Screw, Set, 1/2-20 x 1" UNF-3A	1	644494-401
119	Screw, Locating Arm, 5/16-18 x 1-1/4"	1	643764-402
120	Screw, Roller Clamp, 1/4-20 x 7/8", Drilled.....	8	006100-003
121	* Screw, Rotor Gear Plate Assembly, 1/2-20 x 1/4".....	1	641914-401
122	Screw, Rotor Gear Plate Assembly, 1/4-20 x 1".....	4	006004-002
123	Spacer	1	517071-001
124	+ Spring	1	002198-002
125	Spring, Loading.....	1	641913-401
126	Screw, Body, 1/2-13 x 1"	2	010525-400
127	Screw, Inner Housing Cover, 5/16-18 x 1"	8	006140-002
128	Screw, Cam Assembly, 3/8-16 x 1-1/4"	1	641044-401
129	Screw, Bearing Block, 1/4-20 x 7/8"	3	006100-002

Inner Mechanism General Assembly Number

Standard	517067-091
LPG	517067-096

- + Recommended spares.
- * Not illustrated.
- R Indicates change since last revision.
- @1 Note 1: When ordering, be sure to include temperature range and specific API gravity.

P0547.04X has been made obsolete and replaced by publication number PO01013 (September 2013).
Total Revision since last revision of P0547.04.

Editorial Change: 11/13: Item 24 - material reference changed to PTFE.

Headquarters:
500 North Sam Houston Parkway West,
Suite 100, Houston, TX 77067 USA
Phone: +1 (281) 260 2190
Fax: +1 (281) 260 2191

Operations:
Measurement Products and Equipment:
Ellerbek, Germany +49 (4101) 3040
Erie, PA USA +1 (814) 898 5000

Integrated Measurement Systems:
Corpus Christi, TX USA +1 (361) 289 3400
Kongsberg, Norway +47 (32) 286700

The specifications contained herein are subject to change without notice and any user of said specifications should verify from the manufacturer that the specifications are currently in effect. Otherwise, the manufacturer assumes no responsibility for the use of specifications which may have been changed and are no longer in effect.

Contact information is subject to change. For the most current contact information, visit our website at www.fmctechnologies.com/measurementsolutions and click on the "Contact Us" link in the left-hand column.

www.fmctechnologies.com/measurementsolutions