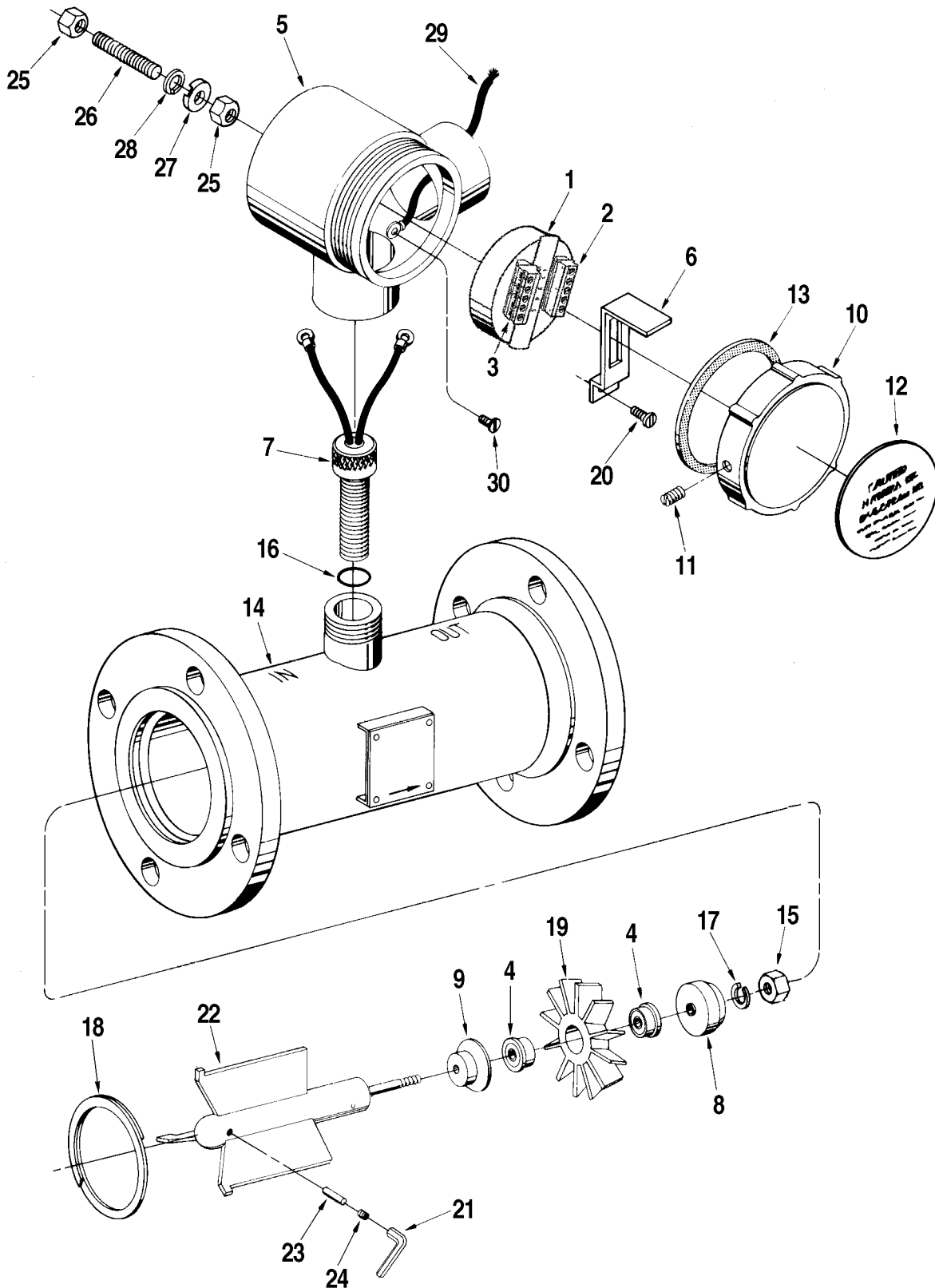


FMC Technologies *Guardman™ GL Series Model K2CA* Parts List

Issue/Rev. 0.4 (8/09)

Bulletin P0578.04



Item	Description	Qty.	Part Number
1	R+ Preamplifier:		
	PA-6, 12 to 24 Vdc	#	230663-101
2	Connector, (1-5).....	#	645030-452
3	Connector, (6-10).....	#	645030-453
4	+ Bearing, Ball	2	644532-406
5	Box, Conduit	#	543256-200
6	Clip, Retaining.....	#	543192-203
7	+ Coil, Pickup:		
	-100°F to +225°F	#	646655-401
	-100°F to +400°F (High Temperature Version).....	#	Consult Factory
	Mating Connector with Leads (High Temperature Version).....	#	Consult Factory
8	Cone, Downstream	1	544686-201
9	Cone, Upstream.....	1	544685-201
10	Cover, Conduit Box:		
	UL/CSA	#	543196-100
	ATEX – Manufactured in U.S.A.	#	544057-101
	ATEX – Manufactured in Germany.....	#	544057-102
11	Screw, Set, #6-32 x 1/4"	#	643243-403
12	Label:		
	UL/CSA.....	#	543195-200
	ATEX – Manufactured in U.S.A.	#	544056-201
	ATEX – Manufactured in Germany.....	#	544056-202
13	Gasket, Cover	#	013403-200
14	Housing.....	1	See Note 1
15	R+ Nut, #2-56, Hex.....	1	643747-405
16	R O-Ring (Carbon Steel Housing Only)	#	641069-474
17	+ Washer, Lock #2	1	643164-413
18	+ Ring, Retaining	1	644420-404
19	R+@2 Rotor Assembly:		
	Standard	1	544699-191
20	Screw, #10-32 x 1/4"	#	009544-401
21	+ Key, Hex, Modified	1	544216-201
22	@3 Stator Assembly.....	1	544690-101
23	Pin, Dowel, 1/8" x 3/16".....	1	644541-402
24	@4 Screw, #8-32 x 3/16" Set.....	1	645416-402
25	R Nut, 1/4"-20 (ATEX version only)	#	060060-001
26	Stud (ATEX version only)	#	550773-001
27	Washer, Inverted (ATEX version only)	#	550770-001
28	Washer, 1/4" Lock (ATEX version only)	#	006621-001
29	Wire, Ground (UL/CSA version only).....	#	544058-101
30	Screw, #10-32 x 1/4" (UL/CSA version only)	#	006110-002

Internal Parts Kit

R	Unidirectional (Standard Linearity)	544699-101
R	Unidirectional (Premium Linearity)	544699-201

- + Recommended stock.
- # Order quantity required.
- R Indicates revision since last issued.

Item	Description	Qty.	Part Number
@1	Note 1: Consult Factory, (814) 898-5000, provide model no. and serial no. and advise: 1. Uni or Bidirectional 4. Flange Class (Pressure) 2. Housing Material 5. Number of Pickup Coil Bosses 3. Flange Material 6. Type of Flange		
@2	Note 2: Due to change in the design of this meter in August of 1987, it is necessary to determine whether your meter is of current or previous design. Standard serial numbers up to and including 5015, and special serial numbers up to and including 200779 are considered previous design. Numbers higher than those are current design. These numbers can be found on the nameplate of the meter and on the stator.		
@3	Note 3: If problems are encountered during installation of stator, please contact the Factory, (814) 898-5000.		
@4	Note 4: Apply a small amount of Loctite (Part No. 643917-401) to set screw before installing.		

Revisions included in P0578.04 Issue/Rev. 0.4 (8/09):
Total Revision.

The specifications contained herein are subject to change without notice and any user of said specifications should verify from the manufacturer that the specifications are currently in effect. Otherwise, the manufacturer assumes no responsibility for the use of specifications which may have been changed and are no longer in effect.

Contact information is subject to change. For the most current contact information, visit our website at www.fmctechnologies.com/measurementsolutions and click on the "Contact Us" link under the "Quick Links" in the right-hand column.

Headquarters:

500 North Sam Houston Parkway West, Suite 100, Houston, TX 77067 USA, Phone: +1 (281) 260 2190, Fax: +1 (281) 260 2191

Gas Measurement Products:

Erie, PA USA +1 (814) 898 5000
Ellerbek, Germany +49 4101 3040
Thetford, England ++44 1842 822900
Kongsberg, Norway +47 (32) 28 67 00
Buenos Aires, Argentina +54 (11) 4312 4736

Integrated Measurement Systems:

Corpus Christi, TX USA +1 (361) 289 3400
Kongsberg, Norway +47 (32) 28 67 00
San Juan, Puerto Rico +1 (787) 772 8100
United Arab Emirates, Dubai +971 (4) 883 0303

Liquid Measurement Products:

Erie, PA USA +1 (814) 898 5000
Los Angeles, CA USA +1 (310) 328 1236
Slough, England +44 (1753) 571515
Ellerbek, Germany +49 4101 3040
Barcelona, Spain +34 (93) 201 0989
Moscow, Russia +7 495 5648705
Melbourne, Australia +61 (3) 9807 2818

Beijing, China +86 (10) 6500 2251
Singapore +65 6861 3011
Chennai, India +91 (44) 450 4400

Visit our website at www.fmctechnologies.com/measurementsolutions