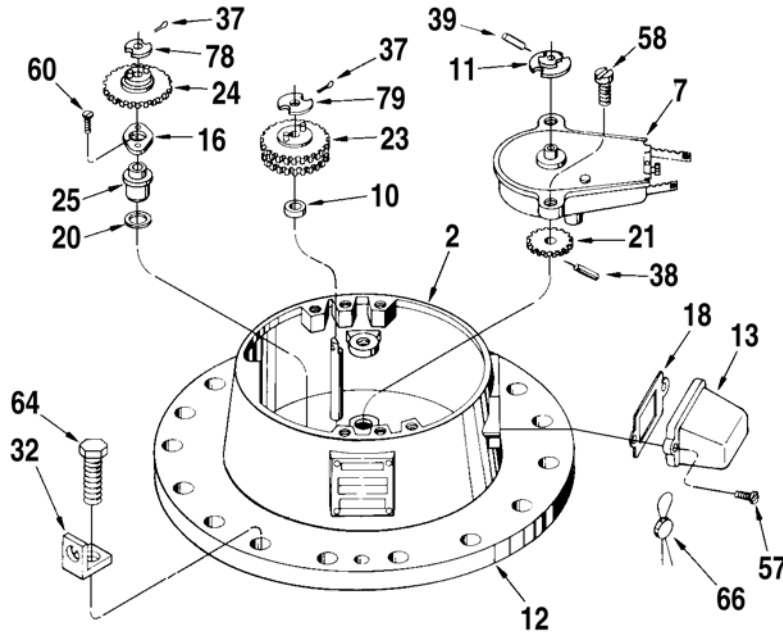


“G” Calibrator Version



Item	Description	Qty.	Part Number
1	Adapter, Calibrator Adjusting Stem.....	1	512372-001
2	Adapter, G Calibrator	1	014240-001
3	+ Bearing, Rotor.....	1	006019-001
4	@1 Block:		
	Standard and All Iron	1	002667-001
	Standard and All Iron, 2,000 SSU to 10,000 SSU.....	1	002667-003
	Non-Ferrous	1	500809-001
5	Bushing, Cover	1	644841-401
6	+ Bushing, Jackshaft:		
	Standard and All Iron	1	011680-001
	Non-Ferrous	1	011679-001
7	@2+ Calibrator:		
	Manual (Standard)	1	512059-001
	Model G.....	1	501029-001
	Temperature Corrected, Standard Range	1	519734-001
	@3 Temperature Corrected, Special Temperature or Gravity	1	533926-xxx
8	Clamp, Oil Tube.....	1	003905-001
9	Collar, Adjusting.....	1	519629-001
10	Collar, Adjusting:		
	G Calibrator Versions	1	002635-001
	All Others	1	011327-001
11	+ Coupling, Drive	1	072103-001
12	Cover:		
	Standard and All Iron	1	519395-001
	Non-Ferrous	1	533795-001
	Non-Ferrous, G Calibrator.....	1	513261-002
13	Cover, G Calibrator	1	014171-001
14	Cover, Knob	1	003553-001
15	Flange, Inlet-Outlet	2	004066-001
16	Flange, Packing Gland.....	1	010171-001

Item		Description	Qty.	Part Number
17	+	Gasket, Drain Plug (Prior Design):		
		Standard and All Iron	1	011139-001
		Non-Ferrous	1	004269-001
18	+	Gasket, G Calibrator	1	014310-001
19	+	Gasket, Inlet-Outlet	2	003958-001
20	+	Gasket, Packing Gland	1	010173-001
21	@4	Gear, Calibrator Drive:		
		U.S. Gallons and Litres	1	008969-001
		U.S. Gallons, G Calibrator	1	500499-001
		Imperial Gallons	1	070210-001
		Dekalitres	1	070269-001
		Dekalitres, G Calibrator	1	517111-001
22		Gear, Jackshaft:		
		Standard and All Iron	1	071409-001
		Non-Ferrous	1	500812-001
23	@4	Gear, Idler Pinion:		
		U.S. Gallons	1	505077-001
		U.S. Gallons, G Calibrator	1	500501-001
		Imperial Gallons	1	505078-001
		Dekalitres	1	505079-001
		Dekalitres, G Calibrator	1	517109-001
		Litres	1	072025-001
24	@4	Gear, Jackshaft Pinion:		
		U.S. and Imperial Gallons and Dekalitres	1	505076-001
		Litres	1	072024-001
25	+	Gland, Packing:		
		Buna-N	1	518630-001
		Viton	1	518630-002
		PTFE ¹	1	009535-001
		Brass/Viton, For Non-Ferrous Use	1	008934-001
26		Housing Assembly:		
		Standard and All Iron	1	071420-001
		Non-Ferrous	1	071420-003
27	+	Cam:		
	@5	Standard and All Iron	1	519630-002
		Non-Ferrous	1	500813-001
28		Dowel, Cam	2	003628-001
29		Plug, Pipe, 1/2" NPT:		
		Standard and All Iron	1	006505-002
		Non-Ferrous	1	006650-001
30		Screw:		
		Standard and All Iron, #10-32 x 1/2"	2	008338-400
		Non-Ferrous, #10-32 x 5/8"	2	065351-001
31		Stud	8	643823-403
32		Lug, Lifting	2	512002-001
33		Nut, Flange, 7/16"-14, UNC-2B	8	006618-002
34		O-Ring, Cover:		
		Buna-N	1	640888-031
		Viton	1	640894-431
35		Oiler	1	006588-001
36		Pin, Adjusting Collar Key	1	001096-001
37		Pin, Cotter, 1/16 x 3/8"	2	009825-400
38		Pin, Groove, 5/64 x 1/2"	1	006053-002
39		Pin, Groove, 1/16 x 5/8"	1	006028-002
40	+	Plate, Thrust Bearing	2	001111-001

¹ Polytetrafluoroethylene (PTFE).

Item	Description	Qty.	Part Number
41	Plug, Drain (Current Design):		
	Standard and All Iron	1	006105-002
	Non-Ferrous	1	065242-002
42	Plug, Drain (Prior Design):		
	Standard and All Iron	1	011140-001
	Non-Ferrous	1	004268-001
43	+ Retainer and Balls, Thrust Bearing:		
	Standard.....	1	070360-002
	All Iron.....	1	070360-001
44	Rotor and Blade Assembly:		
	Standard.....	1	005004-001
	All Iron.....	1	009679-001
	R Non-Ferrous	1	533791-001
45	+ Blade, Lower:		
	Standard	1	008592-001
	Standard, 2,000 SSU to 10,000 SSU.....	1	008592-041
	Standard, 200°F Max.	1	008592-042
	Standard, 2,000 to 10,000 SSU & 200°F Max.	1	008592-043
	Non-Ferrous	1	554551-001
	All Iron	1	009542-001
	All Iron, 2,000 SSU to 10,000 SSU	1	009542-041
46	Pin, Cotter:		
	All Iron.....	2	001095-401
	Standard	2	009825-400
47	Pin, Roller, All Versions	2	001349-001
48	Roller, Blade:		
	Standard and Non-Ferrous	2	014114-001
	All Iron.....	2	014115-001
49	+ Blade, Upper:		
	Standard	1	008593-001
	Standard, 2,000 SSU to 10,000 SSU.....	1	008593-041
	Standard, 200°F Max.	1	008593-042
	Standard, 2,000 to 10,000 SSU & 200° F Max.	1	008593-043
	Non-Ferrous	1	554552-001
	All Iron	1	009543-001
	All Iron, 2,000 SSU to 10,000 SSU	1	009543-041
50	Pin, Cotter:		
	Standard	2	001095-401
	All Iron.....	2	641042-401
51	Pin, Roller, All Versions	2	001349-001
52	Roller, Blade:		
	Standard and Non-Ferrous	2	014114-001
	All Iron.....	2	014115-001
53	+ Block, Blade.....	4	010289-002
54	Clamp, Blade Block	4	010212-001
55	Rotor, Sub Assembly:		
	Standard and All Iron	1	072038-001
	Non-Ferrous	1	500818-001
56	Screw:		
	Standard and Non-Ferrous, #10-32 x 1/2"	8	008338-400
	All Iron, #10-32 x 5/8"	8	065082-003
57	Screw, 1/4-20 x 1/2", Drilled, G Calibrator	2	006775-003
58	Screw, 1/4-20 x 1/2", G Calibrator	2	006775-002
59	Screw, #10-24 x 3/4"	2	006481-003
60	Screw, #10-32 x 1/2"	2	006764-002
61	Screw, #10-32 x 7/8"	3	640835-001

Item	Description	Qty.	Part Number
62	Screw, #6-32 x 5/16"	2	006048-002
63	Screw, Cap: Standard and All Iron, 5/16-18 x 5/8"	2	002271-401
	Non-Ferrous, 5/16-18 x 3/4"	2	002046-400
64	Screw, Cap, 3/8-16 x 1"	16	060248-002
65	Screw, Cap, 5/16-24 x 1-1/4": Standard, All Iron and Non-Ferrous	1	643299-401
66	+ Seal, Lead and Wire	2	001627-400
67	@5 Spacer, Cam	1	512672-002
68	Spider	1	013652-002
69	+ Spring, Rotor.....	1	001094-002
70	Stem Assembly, Adjusting	1	009838-001
71	Ball, Steel	2	006427-001
72	Plate, Base	1	003552-001
73	Plate, Retainer	1	003556-001
74	Spring, Knob	2	003557-001
75	Stem, Adjusting	1	003551-001
76	Stud, Idler	1	004036-001
77	Tube, Oil.....	1	514658-001
78	+ Washer, Drive	1	001125-001
79	Washer, Idler Pinion.....	1	003599-001

+ Recommended stock.

@1 Previous design block (stick style), Part No. 539487-001, has been replaced by design illustrated.

@2 See Form No. PO01028 for component parts.

@3 When ordering, include temperature range, API, or specific gravity, API Table used and meter gearing.

@4 Standard gearing called out. For special combinations, see Gear Train Bulletin AB01023.

@5 Due to a Cam design change made in May 1993, any standard or All Iron meters manufactured after that time will require a cam and a spacer (Item #62, P/N: 512672-002). This part number (519630-002) is a kit which includes the cam and the spacer.

Editorial Change: 11/13: Item 25 - material reference changed to PTFE.

Headquarters:

500 North Sam Houston Parkway West,
Suite 100, Houston, TX 77067 USA
Phone: +1 (281) 260 2190
Fax: +1 (281) 260 2191

Operations:

Measurement Products and Equipment:
Ellerbek, Germany +49 (4101) 3040
Erie, PA USA +1 (814) 898 5000

Integrated Measurement Systems:
Corpus Christi, TX USA +1 (361) 289 3400
Kongsberg, Norway +47 (32) 286700

The specifications contained herein are subject to change without notice and any user of said specifications should verify from the manufacturer that the specifications are currently in effect. Otherwise, the manufacturer assumes no responsibility for the use of specifications which may have been changed and are no longer in effect.

Contact information is subject to change. For the most current contact information, visit our website at www.fmctechnologies.com/measurementsolutions and click on the "Contact Us" link in the left-hand column.

www.fmctechnologies.com/measurementsolutions