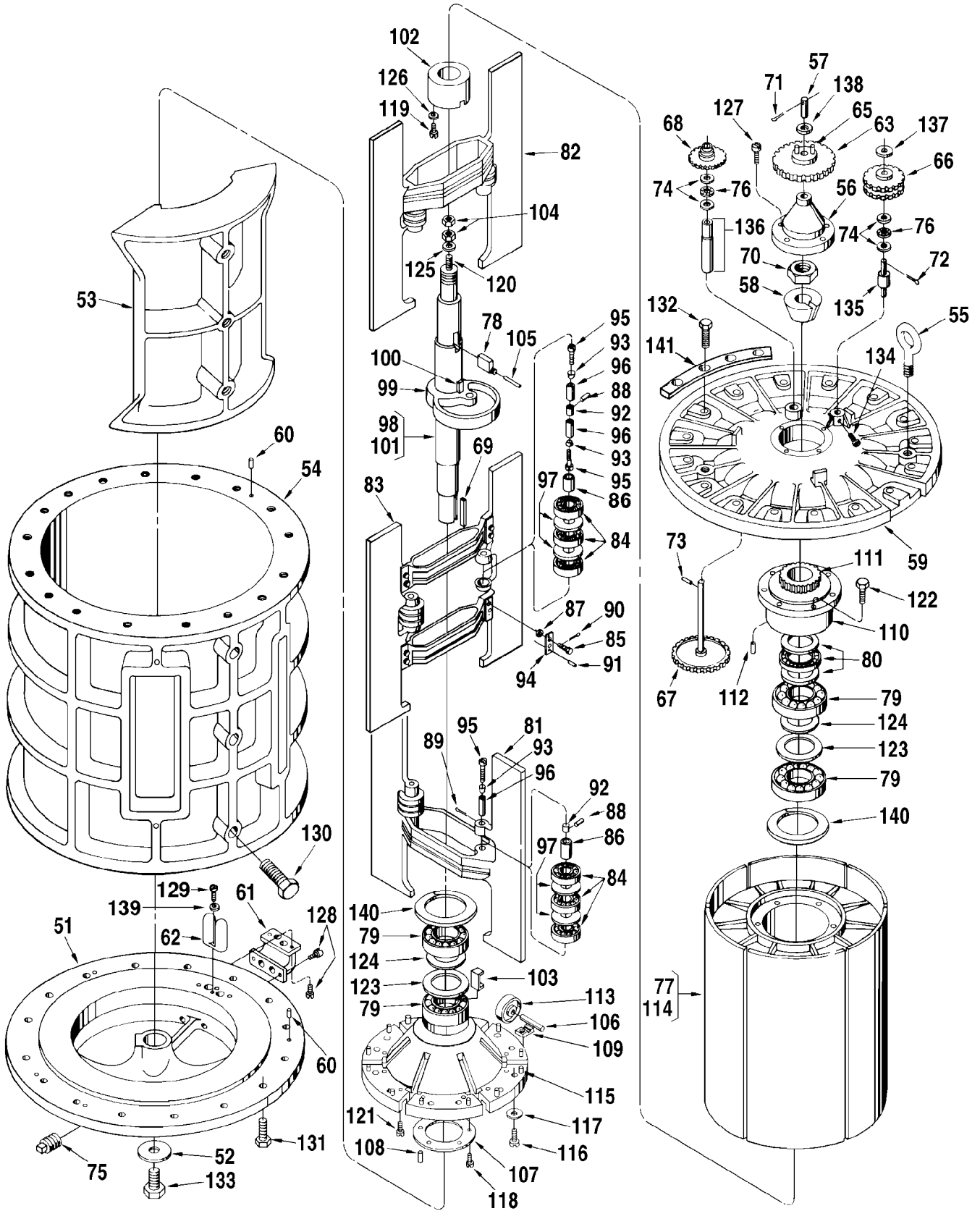


\*For meters which began shipping in 1993 to current. For meters shipped prior to 1993, use Form No. P0554.0\*

# Inner Mechanism



Item	Description	Qty.	M16-S3, S5	M16-S6
1	Adapter:			
	Standard.....	1	518350-001	518350-001
	Slotted (For Use with Packing Gland Lubrication Kit)	1	518350-002	518350-002
2	+ Calibrator:			
	Standard (Manual) .....	1	512059-001	512059-001
	Temperature Compensated, Standard .....	1	512060-001	512060-001
	@1 Temperature Compensated, Special Temp.			
	or API Gravity .....	1	516130-	516130-
	Dummy Calibrator .....	1	516105-001	516105-001
3	Clamp, Oil Tube.....	1	003905-001	003905-001
4	Coupling, Drive:			
	Standard, Use on 3/16" Shaft.....	1	005969-001	005969-001
	Used on Transmitters with 1/4" Shaft .....	1	005969-003	005969-003
5	Pin.....	1	003540-001	
6	Coupling, Drive .....	1	072103-001	072103-001
7	Cover .....	1	554105-001	554230-001
8	Cover, Knob .....	1	003553-001	003553-001
9	+ Gasket, Cover Plate.....	1	003834-001	003834-001
10	R+ O-Ring, Packing Gland .....	1	012009-001	640888-001
11	@2+ Gland, Packing.....	1	070318-001	515849-001
12	@3 Housing Assembly, Outer:			
	S3 Version .....	1	554103-001	.....
	S5 Version .....	1	554103-002	.....
	S6 Version .....	1	.....	554144-001
13	Cap, Pipe .....	1	640259-001	640259-001
14	Nipple, Pipe .....	1	640475-003	640475-003
15	Pin, Locating.....	2	003348-001	003348-001
16	Lubrication Assembly.....	1	513127-001	513127-001
17	Nut, Hex 1-1/2" - 8 .....	64	642148-426	.....
	Nut, Hex 1-3/4" -8 .....	64	.....	642148-411
18	+ O-ring, Buna-N.....	2	640888-001	640888-001
19	+ O-ring, Buna-N.....	2	640888-005	640888-005
20	+ O-ring, Cover:			
	Buna-N.....	1	502929-001	502929-001
	Viton .....	1	502929-002	502929-002
21	Oiler, Gits #1230 .....	1	006588-001	006588-001
22	Pin, Drive, 5/64" x 1/2".....	1	006053-002	006053-002
23	Plate, Caution .....	1	006571-001	006571-001
24	Plate, Cover .....	1	003440-001	003440-001
25	Plug, Pipe, 1/2" NPT .....	1	006505-002	006505-002
26	Plug, Pipe, 3/4" NPT .....	1	006878-002	006878-002
27	Screw, Type U x 1/8" .....	8	009880-400	009880-400
28	Screw, #6-32 x 5/16" .....	2	006048-002	006048-002
29	Screw, Base Plate, #10-32 x 5/8" .....	2	008338-400	008338-400
30	Screw, Calibrator Mounting, #10-24 x 3/4" .....	2	006481-003	006481-003
31	Screw, Cap, Adapter Cover, 5/16-18 x 1-1/2", Drilled	2	642043-432	642043-432
32	Screw, Cap, Innermech., 1"-8 x 4-1/2".....	2	640208-012	640208-012
33	Screw, Cap, Packing Gland, 7/16-14 x 1-1/2".....	4	006410-002	006410-002
34	Screw, Cover Plate, #10-32 x 3/8" .....	2	006045-002	006045-002
35	+ Seal, Lead and Wire .....	2	001627-400	001627-400
36	Shaft Assemblby, Calibrator Drive .....	1	514294-001	513739-001
37	Coupling, Lower Drive .....	1	503408-001	503408-001
38	Coupling, Upper Drive.....	1	501970-001	501801-001
39	Pin, Groove, 5/64 x 1/2" .....	2	006053-002	006053-002
40	Shaft.....	1	514295-001	513510-001
41	Stem Assembly, Adjusting .....	1	009838-001	009838-001

Item	Description	Qty.	M16-S3, S5	M16-S6
42	Ball .....	2	006427-001	006427-001
43	Plate, Base .....	1	003552-001	003552-001
44	Plate, Retainer .....	1	003556-001	003556-001
45	Spring, Knob .....	2	003557-001	003557-001
46	Stem, Adjusting .....	1	003551-001	003551-001
47	Stud:			
	1-1/2-8 x 9-1/2" .....	32	642355-409	.....
	1-3/4-8 x 11" .....	32	.....	641177-403
48	Tube, Oil.....	1	514658-001	514658-001
49	Washer.....	2	535493-001	535493-001
50	Washer, O-ring.....	2	554213-001	554213-001

### Inner Mechanism

Item	Description	Qty.	M16-S3, S5	M16-S6
51	Base.....	1	502816-001	502816-001
52	Base, Shaft cover.....	1	502832-001	502832-001
53	Block .....	1	502818-001	502818-001
54	Body.....	1	554106-001	554106-001
55	Bolt, Eye .....	2	065433-005	065433-005
56	Cap, Adjusting Screw.....	1	502833-001	502833-001
57	Shaft, Drive Gear .....	1	503407-001	503407-001
58	Cone, Shaft.....	1	502874-001	502874-001
59	Cover, Inner .....	1	502817-001	513527-001
60	Dowel, Cover and Base .....	2	003348-001	003348-001
61	Elbow, Pitot Fitting .....	1	503580-001	503580-001
62	R Fitting Pitot.....	1	503582-001	503582-001
63	+ Gear, Calibrator Drive:			
	1:1 Barrel.....	1	502913-001	502913-001
	1:1 Hectoliter .....	1	539324-001	539324-001
64	Bushing.....	1	065311-001	065311-001
65	Pin .....	2	500418-001	500418-001
66	+ Gear, Idler:			
	1:1 Barrel.....	1	502910-001	502910-001
	1:1 Hectoliter .....	1	539322-001	539322-001
67	+ Gear, Jackshaft.....	1	502905-001	502905-001
68	+ Gear, Single .....	1	502908-001	502908-001
69	Key, Rotor Shaft.....	1	502937-001	502937-001
70	Nut, Rotor Shaft.....	1	502954-001	502954-001
71	Pin, Cotter, 1/16 x 1/2" .....	1	001095-401	001095-401
72	Pin, Cotter, 1/8 x 3/4" .....	1	001292-401	001292-401
73	Pin, Groove, 1/8 x 3/4" .....	1	006127-002	006127-002
74	+ Plate, Thrust Bearing .....	4	001111-001	001111-001
75	Plug, Pipe, 1" NPT .....	1	006482-002	006482-002
76	+ Retainer and Balls, Thrust Bearing.....	2	070360-001	070360-001
77	Rotor Assembly (Standard Only) .....	1	515694-001	515694-001
78	R Bar, Adjusting .....	1	502919-001	502919-001
79	+ Bearing, Rotor.....	4	502938-001	502938-001
80	+ Bearing, Thrust:			
	Standard .....	1	640207-001	640207-001
	All Iron .....	1	640207-499	640207-499
81	R Blade Assembly, Lower:			
	Standard .....	1	550566-001	550566-001
	All Iron .....	1	551554-001	551554-001
82	R Blade Assembly, Upper:			
	Standard .....	1	550565-001	550565-001
	All Iron .....	1	551553-001	551553-001

Item		Description	Qty.	M16-S3, S5	M16-S6
83	R	Blade Assembly, Middle:			
		Standard .....	1	550564-001	550564-001
		All Iron .....	1	551552-001	551552-001
84	+	Bearing.....	6	640163-001	640163-001
85		Bolt (middle blade only) .....	8	503458-001	503458-001
86		Bushing .....	2	503915-001	503915-001
87		Nut, Hex, 1/2-20 x 9/16" (middle blade only)...	8	640266-001	640266-001
88		Pin, Blade Bearing Bushing .....	2	503919-001	503919-001
89		Pin, Cotter, 1/8 x 2" .....	2	006187-001	006187-001
90		Pin, Cotter, 3/32 x 7/8" (middle blade only).....	8	003240-400	003240-400
91		Pin, Dowel (middle blade only).....	8	502884-001	502884-001
92		Plug, Center .....	2	503916-001	503916-001
93		Plug, End .....	4	513018-001	513018-001
94		Retainer, Dowel (middle blade only) .....	8	503409-001	503409-001
95		Screw, Cap, 1/4-28 x 2-14" .....	4	640438-402	640438-402
96		Sleeve, Expansion, 2-14" Long.....	4	503917-002	503917-002
97		Washer, Spacer.....	1	504272-001	504272-001
98		Cam and Shaft Assembly.....	1	502934-001	502934-001
99		Cam .....	1	518068-001	518068-001
100		Key.....	1	502937-001	502937-001
101		Shaft .....	1	502838-001	502838-001
102		Collar.....	1	502875-001	502875-001
103	+	Lock, Rotor Bearing .....	2	502928-001	502928-001
104		Nut, Adjusting Screw .....	2	006705-002	006705-002
105		Pin, Adjusting Bar.....	1	640200-018	640200-018
106		Pin, Rotor Cover Roller .....	6	503551-001	503551-001
107		Plate Assembly, Lock .....	1	553464-001	553464-001
108		Pin .....	1	503321-001	503321-001
109		Plate, Rotor Cover Roller Pin .....	12	502858-001	502858-001
110		Plate, Rotor Gear .....	1	553461-001	553461-001
111		Gear, Rotor .....	1	502851-001	502851-001
112		Pin, Lock.....	1	503321-001	503321-001
113	+	Roller, Rotor Cover.....	6	503552-001	503552-001
114		Rotor, Sub Assemblby.....	1	551769-001	551769-001
115		Dowel.....	13	502945-001	502945-001
116		Screw, 5/8-11 x 2-14", Drilled .....	12	503665-001	503665-001
117		Washer, Flat.....	12	640437-001	640437-001
118		Screw, 3/8-16 x 7/8", Hex Hd.....	6	007558-400	007558-400
119		Screw, #10-32 x 3/8" .....	2	643339-401	643339-401
120		Screw, Adjusting.....	1	502920-001	502920-001
121		Screw, Pin Clamp, 3/8-16 x 1-1/4".....	12	660248-404	660248-404
122		Screw, Rotor Gear Plate, 1/2-13 x 2", Drilled .....	6	553675-001	553675-001
123		Spacer, Rotor Bearing, Outer Race .....	2	553526-001	553526-001
124		Spacer, Rotor Bearing, Inner Race .....	2	504273-001	504273-001
125		Washer, Flat .....	1	641837-402	641837-402
126		Washer, Flat .....	2	006929-001	006929-001
127		Screw, 3/8-16 x 1-1/4".....	4	002238-401	002238-401
128		Screw, 5/16-18 x 1" .....	4	060133-002	060133-002
129		Screw, 5/16-18 x 3/4".....	2	009548-400	009548-400
130		Screw, Body and Block 5/8-11 x 2-14".....	4	503665-001	503665-001
131		Screw, Cover and Base, 3/4-10 x 2-3/4" .....	16	641068-402	641068-402
132	R	Screw, Cover 3/4-10 x 2-3/4" .....	16	641068-402	641068-402
133	R	Screw, Rotor Shaft.....	1	643535-401	643535-401
134		Screw, Set, 1/4-20 x 1/4" .....	1	006538-001	006538-001
135		Shaft, Pinion with Spacer.....	1	502930-001	502930-001
136		Sleeve Assembly, Jackshaft.....	1	502831-001	502831-001

Item	Description	Qty.	M16-S3, S5	M16-S6
137	Washer, Flat.....	1	005500-401	005500-401
138	Washer, Flat.....	1	060554-001	060554-001
139	Washer, Flat.....	2	642482-407	642482-407
140	Ring, Retaining .....	2	646136-401	646136-401
141	Support Ring, M16-S6 Innermech. only.....	4	.....	535484-001

R Indicates change since last revision.

+ Recommended Stock

A/R As Required.

@1 Note 1: When ordering, include product temperature range, specific or API Gravity, API Table used, and meter and gearing the calibrator is to be used in conjunction with.

@2 Note 2: See Form No. P0605.02 for component parts.

@3 Note 3: Meter housing design was updated to a single piece design on meters which began reaching the field in January, 1996.

### Inner Mechanism General Assembly Numbers

M16-S3 and S5 Barrel Geared, Standard.....	554139-091
M16-S3 and S5 Barrel Geared, All Iron Trim .....	554139-092
M16-S3 and S5 Hectoliter Geared, Standard .....	554139-891
M16-S3 and S5 Hectoliter Geared, All Iron Trim.....	554139-892
M16-S6 Barrel Geared, Standard .....	554169-091

The specifications contained herein are subject to change without notice and any user of said specifications should verify from the manufacturer that the specifications are currently in effect. Otherwise, the manufacturer assumes no responsibility for the use of specifications which may have been changed and are no longer in effect.

#### Headquarters:

500 North Sam Houston Parkway West, Suite 100 Houston, TX 77067 USA, Phone: +1 (281) 260-2190, Fax: +1 (281) 260-2191

#### Gas Measurement Products:

Houston, TX USA +1 (281) 260-2190  
 Thetford, England +44 (1842) 82-2900  
 Kongsberg, Norway +47 (32) 286-700  
 Buenos Aires, Argentina +54 (11) 4312-4736

#### Integrated Measurement Systems:

Corpus Christi, TX USA +1 (361) 289-3400  
 Kongsberg, Norway +47 (32) 286-700  
 San Juan, Puerto Rico +1809 (787) 274-3760  
 United Arab Emirates, Dubai +971 (4) 331-3646

#### Liquid Measurement Products:

Erie, PA USA +1 (814) 898-5000  
 Los Angeles, CA USA +1 (310) 328-1236  
 Slough, England +44 (1753) 57-1515  
 Ellerbek, Germany +49 (4101) 304-0  
 Barcelona, Spain +34 (93) 201-0989  
 Moscow, Russia +7 (495) 564-8705  
 Melbourne, Australia +61(3) 9807-2818

Beijing, China +86 (10) 6500-2251  
 Singapore +65 6861-3011  
 Chennai, India +91 (44) 450-4400

Visit our website at [www.fmctechnologies.com/measurementsolutions](http://www.fmctechnologies.com/measurementsolutions)