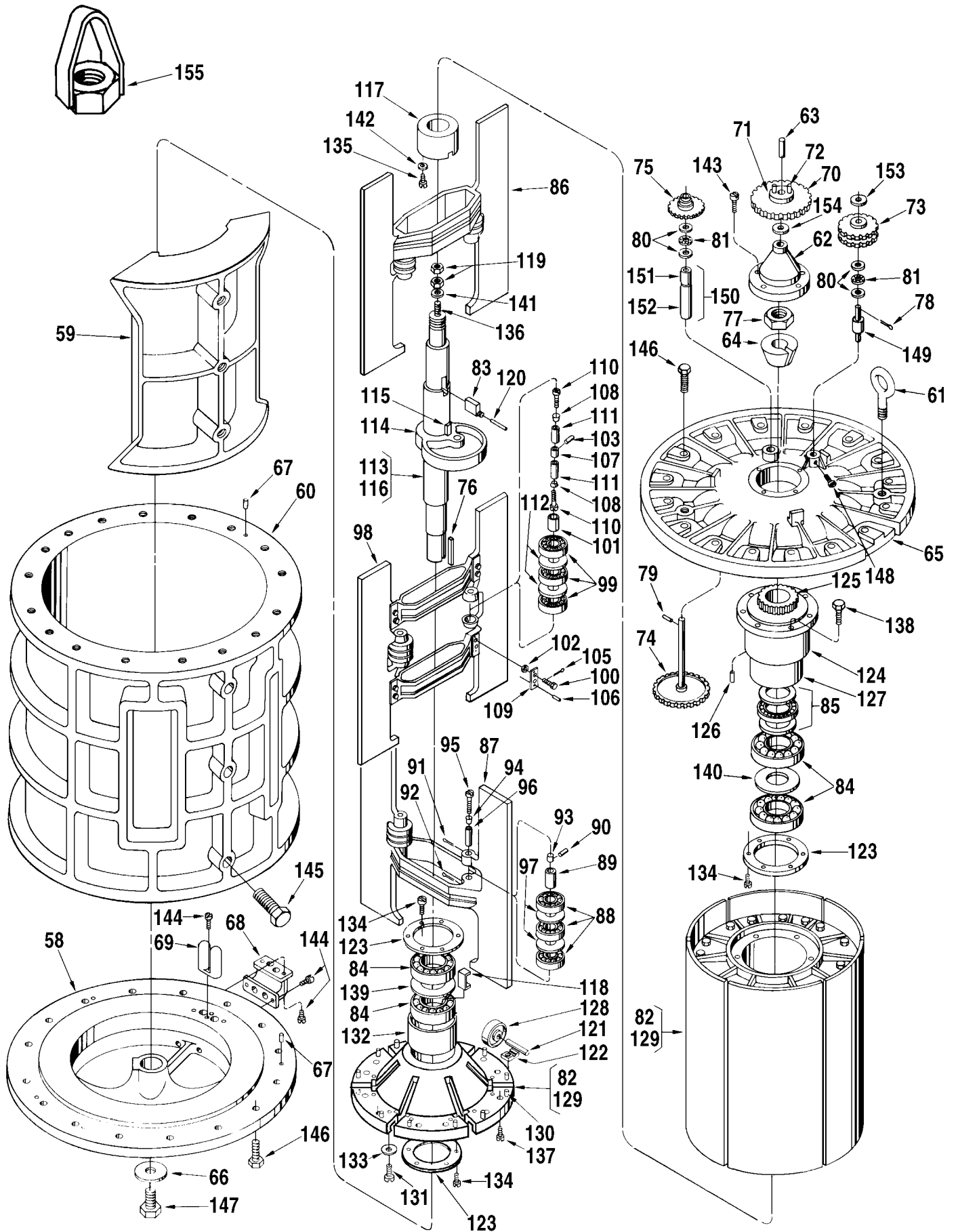


Inner Mechanism



Item	Description	Qty.	K12-S1	K12-S3 K12-S5	K12-S6 K12-S7
1	Adapter, Calibrator Adjusting Stem.....	1	512372-001
2	Adapter:				
	Standard and ATC	1	518350-001	518350-001	515755-001
	Slotted (For Use with Packing Gland Lubrication Kit).....	1	518350-002	518350-002
	ATG.....	1	506123-002	506123-002	516608-001
3	Blank, Snap-In	1	015533-402
4	Bolt, Eye	2	065289-001
5	+ Calibrator:				
	Manual	1	512059-001	512059-001	512059-001
	Temperature Compensated, Standard.....	1	512060-001	512060-001	512060-001
	@1 Temperature Compensated, Special Temperature or API Gravity.....	1	516130-	516130-	516130-
	Dummy Calibrator.....	1	516105-001	516105-001	516105-001
6	Clamp, Oil Tube.....	1	003905-001	003905-001	003905-001
7	Coupling, Calibrator Drive:				
	Standard, Used on 3/16" Shaft	1	005969-001	005969-001	005969-001
	Used on Transmitters with 1/4" Shaft	1	005969-002	005969-002	005969-002
8	Pin.....	1	003540-001	003540-001	003540-001
9	+ Coupling, Drive	1	072103-001	072103-001	072103-001
10	Cover:				
	S7 Only, Standard.....	1	518803-001
	All Others, Standard	1	513036-001	513321-001	533071-001
	S3 Only, NACE	1	513321-051
11	Cover, Knob	1	003553-001	003553-001	003553-001
12	Flange, Temperature Well	1	011941-001	011941-001	012026-001
13	Gasket, Cover Plate.....	1	003834-001	003834-001	003834-001
14	+ Gasket, Packing Gland	1	011337-001	011337-001
15	Gasket, Temperature Well.....	1	060341-001	060341-001	060341-001
16	+@2 Gland, Packing:				
	Standard	1	009652-001	009652-001	515849-001
	Teflon	1	009652-002	009652-002	515849-002
	NACE.....	1	551132-001	551439-001
17	Housing Assembly:				
	R S1, S3, and S6 Standard.....	1	513028-001	518925-002	533074-001
	R S5 and S7 Standard	1	513326-002	518802-001
	S3 and S6 (With Flanged Drain) NACE	1	518925-051	551505-001
18	Cap, Pipe:				
	Standard	1	640259-001	640259-001	640259-001
	NACE.....	1	645238-402
19	Nipple, Pipe:				
	S7 Only, Standard.....	1	643351-401
	All Others, Standard	1	640475-002	640475-002	640475-002
	S3 Only, NACE	1	645249-403
20	Plug, Pipe, 1/2" NPT:				
	Standard	2	006505-002	006505-002	006505-002
	S3 and S6, NACE	2	645242-402	645242-402
21	Lubrication Assembly.....	1	513127-001	513127-001
22	Nut, Housing to Cover:				
	S7 Only, 1-1/2"-8.....	64	642148-410
	S6 Only, 1-1/4"-8.....	64	640976-402
	All Others, 1"-8.....	56	006385-400	006385-400
23	+ O-Ring, Cover:				
	Buna-N.....	1	513032-001	513032-001	513032-001
	Viton.....	1	513032-002	513032-002	513032-002
24	+ O-Ring, Packing Gland:				
	Buna-N.....	1	640888-001
	Viton.....	1	640894-001
25	Oiler	1	006588-001	006588-001	006588-001
26	Pin, Groove, 5/64 x 1/2"	1	006053-002	006053-002	006053-002

Item	Description	Qty.	K12-S1	K12-S3 K12-S5	K12-S6 K12-S7
27	Pin, Locating Dowel	2	641075-401	641075-401	641075-401
28	Plate, Caution	1	006571-001	006571-001	006571-001
29	Plate, Cover	1	003440-001	003440-001	003440-001
30	Plate, Lubrication	1	517715-001	517715-001	515873-001
31	Plug, Pipe, 1/2" NPT:				
	Standard	1	006505-002	006505-002	006505-002
	NACE:				
	S3 Only	3	645242-402
	S6 Only	4	645242-402
32	Plug, Pipe, 1" NPT:				
	Standard	1	006482-002	006482-002	006482-002
	NACE:				
	S3 Only	1	645242-404
	S6 Only	1	645242-404
33	Plug, Temperature Well	1	012025-001	012025-001	012025-001
34	Screw:				
	S1, S3, and S5, 5/16-18 x 7/8"	2	009563-400	009563-400
	S6 and S7, 5/16-18 x 3/4"	4	006409-002
35	Screw, Drive #2 x 1/8"	12	009880-400	009880-400	009880-400
36	Screw, #10-24 x 3/4"	2	006481-003	006481-003	006481-003
37	Screw, Adapter to Cover	2	642043-432	642043-432	642019-416
38	Screw, Base Plate, #10-32 x 7/8"	2	640835-001	640835-001	640835-001
39	Screw, Calibrator Mounting	2	006270-002	006270-002	006048-002
40	Screw, Cover Plate, #10-32 x 3/8"	2	006045-002	006045-002	006045-002
41	Screw, Nozzle to Innermech:				
	Standard	4	640400-001	640400-001	640479-001
	NACE:				
	S3 Only	4	645250-402
	S6 Only	4	645250-401
42	Screw, Packing Gland:				
	5/16-18 x 1-1/4"	3	006511-002	006511-002
	7/16-14 x 1-1/2"	4	006410-002
43	+ Seal, Lead, and Wire	2	001627-400	001627-400	001627-400
44	Shaft Assembly, Calibrator Drive:				
	S7 Only	1	518804-001
	All Others	1	512944-001	512944-001	533065-001
45	Coupling, Lower Drive:				
	S7 Only	1	518851-001
	All Others	1	503408-001	503408-001	503408-001
46	Coupling, Upper Drive	1	501970-001	501970-001	501800-002
47	Pin, Groove, 5/64 x 1/2":				
	S7 Only	2	065354-002
	All Others	2	006053-002	006053-002	006053-002
48	Shaft:				
	S7 Only	1	518850-001
	All Others	1	512945-001	512945-001	533064-001
49	Stem Assembly, Adjusting	1	009838-001	009838-001	009838-001
50	Ball	2	006427-001	006427-001	006427-001
51	Plate, Base	1	003552-001	003552-001	003552-001
52	Plate, Retainer	1	003556-001	003556-001	003556-001
53	Spring, Knob	2	003557-001	003557-001	003557-001
54	Stem, Adjusting	1	003551-001	003551-001	003551-001
55	Stud:				
	S1, S3, and S5	28	640446-402	640446-402
	S6 Only	32	642355-404
	S7 Only	32	642356-405
56	Tube, Oil	1	501798-001	501798-001	514658-001
57	Washer, Lock Spring	2	002917-400
57A	Washer, Nozzle to Innermech	4	518854-001	518854-001	518854-001

Inner Mechanism

Item	Description	Qty.	Part Number
58	Base.....	1	512978-001
59	Block:		
	Standard.....	1	512983-001
	High Viscosity for 1,000 SSU to 3,000 SSU.....	1	512983-201
	High Viscosity for 1,000 SSU to 5,000 SSU.....	1	512983-202
	High Viscosity for 5,000 SSU to 10,000 SSU.....	1	512983-203
60	Body.....	1	512982-001
61	Bolt, Eye.....	2	065433-005
62	Cap, Adjusting Screw.....	1	502823-001
63	Shaft, Drive Gear.....	1	503407-001
64	Cone, Shaft.....	1	512962-001
65	Cover.....	1	512977-001
66	Cover, Rotor Shaft.....	1	512968-001
67	Dowel, Cover, and Base.....	2	641075-401
68	Elbow, Pitot Fitting.....	1	513060-001
69	Fitting, Pitot.....	1	503582-001
70	@3 Gear, Calibrator Drive:		
	Hectoliters, Standard.....	1	518417-001
	Barrels, Standard.....	1	512947-001
	Barrels, LPG.....	1	533111-001
71	Bushing:		
	Standard.....	1	065311-001
	LPG.....	1	533112-001
72	Pin.....	2	500418-001
73	@3 Gear, Idler:		
	Hectoliters, Standard.....	1	518415-001
	Barrels, Standard.....	1	512948-001
	Barrels, LPG.....	1	533114-001
74	Gear, Jackshaft.....	1	512949-001
75	@3 Gear, Jackshaft Pinion:		
	Standard.....	1	512951-001
	LPG.....	1	533102-001
76	Key, Rotor Shaft.....	1	513122-001
77	Nut, Rotor Shaft, 1-3/4"-8, UN-3B.....	1	643797-401
78	Pin, Cotter, 1/8 x 3/4".....	1	001292-401
79	Pin, Groove, 1/8 x 3/4".....	1	006127-002
80	+ Plate, Thrust Bearing.....	4	001111-001
81	+ Retainer, Thrust Bearing.....	2	070360-001
82	Rotor Assembly, Standard.....	1	517522-001
83	Bar, Adjusting.....	1	512955-001
84	+ Bearing, Rotor:		
	Standard and All Iron.....	4	513168-001
	LPG.....	4	513168-002
85	+ Bearing, Thrust.....	1	641071-401
86	+ Blade Assembly, Upper:		
	Standard.....	1	513106-001
	Modified for 1,000 SSU to 3,000 SSU.....	1	513106-101
	Modified for 1,000 SSU to 5,000 SSU.....	1	513106-102
	Modified for 5,000 SSU to 10,000 SSU.....	1	513106-103
	Modified for 200°F.....	1	513106-104
	Modified for 1,000 SSU to 3,000 SSU and 200°F.....	1	513106-105
	Modified for 1,000 SSU to 5,000 SSU and 200°F.....	1	513106-106
	Modified for 5,000 SSU to 10,000 SSU and 200°F.....	1	513106-107
87	+ Blade Assembly, Lower:		
	Standard.....	1	513107-001
	Modified for 1,000 SSU to 3,000 SSU.....	1	513107-101
	Modified for 1,000 SSU to 5,000 SSU.....	1	513107-102
	Modified for 5,000 SSU to 10,000 SSU.....	1	513107-103
	Modified for 200°F.....	1	513107-104
	Modified for 1,000 SSU to 3,000 SSU and 200°F.....	1	513107-105

Item	Description	Qty.	K12-S1	K12-S3 K12-S5	K12-S6 K12-S7
	Modified for 1,000 SSU to 5,000 SSU and 200°F.....			1	513107-106
	Modified for 5,000 SSU to 10,000 SSU and 200°F.....			1	513107-107
88	Bearing			6	644412-407
89	Bushing.....			2	513016-001
90	Pin, Blade Bearing Bushing.....			2	513150-001
91	Pin, Cotter, 1/8 x 2".....			2	006187-001
92	Pin, Cotter, 1/8 x 2-1/2".....			2	640477-001
93	Plug, Center.....			2	513017-001
94	Plug, End.....			4	513018-001
95	Screw, Cap, 1/4-28 x 1-1/2".....			4	640438-403
96	Sleeve, Expansion.....			4	513019-001
97	Spacer.....			4	516947-001
98	+ Blade Assembly, Middle:				
	Standard.....			1	513121-001
	Modified for 1,000 SSU to 3,000 SSU.....			1	513121-101
	Modified for 1,000 SSU to 5,000 SSU.....			1	513121-102
	Modified for 5,000 SSU to 10,000 SSU.....			1	513121-103
	Modified for 200°F.....			1	513121-104
	Modified for 1,000 SSU to 3,000 SSU and 200°F.....			1	513121-105
	Modified for 1,000 SSU to 5,000 SSU and 200°F.....			1	513121-106
	Modified for 5,000 SSU to 10,000 SSU and 200°F.....			1	513121-107
99	+ Bearing.....			6	644412-407
100	Bolt.....			8	513158-001
101	Bushing.....			2	513016-001
102	Nut, Hex.....			8	006015-002
103	Pin, Blade Bearing Bushing.....			2	513150-001
104	Pin, Cotter, 1/8 x 2".....			4	006187-001
105	Pin, Cotter, 3/32 x 1".....			8	006308-001
106	Pin, Dowel.....			8	513173-001
107	Plug, Center.....			2	513017-001
108	Plug, End.....			4	513018-001
109	Retainer, Dowel.....			8	513146-001
110	Screw, Cap, 1/4-28 x 1-1/2".....			4	640438-403
111	Sleeve, Expansion.....			4	513019-001
112	Spacer.....			4	516947-001
113	+ Cam and Shaft Assembly.....			1	513157-001
114	Cam.....			1	518132-001
115	Key.....			1	513122-001
116	Shaft.....			1	512961-001
117	Collar.....			1	512957-001
118	Lock, Rotor Bearing.....			2	513119-001
119	Nut, Adjusting Screw.....			2	640671-001
120	Pin, Roll, 5/32 x 1".....			1	010527-400
121	Pin, Rotor Cover Roller.....			6	512960-001
122	Plate, Rotor Cover Roller Pin.....			12	502858-001
123	Plate, Lock.....			3	512965-001
124	Plate, Rotor Gear.....			1	512958-001
125	Gear, Rotor.....			1	512959-001
126	Pin, Lock.....			1	503321-001
127	Sleeve, Upper Rotor Bearing.....			1	512964-001
128	+ Roller, Rotor Cover:				
	Standard and All Iron.....			6	503552-001
	LPG.....			6	503552-002
129	Rotor, Sub Assembly:				
	Standard.....			1	512980-001
	Modified for 1,000 SSU to 3,000 SSU.....			1	512980-101
	Modified for 1,000 SSU to 5,000 SSU.....			1	512980-102
	Modified for 5,000 SSU to 10,000 SSU.....			1	512980-103
	Modified for 200°F.....			1	512980-104
	Modified for 1,000 SSU to 3,000 SSU and 200°F.....			1	512980-105

Item	Description	Qty.	K12-S1	K12-S3 K12-S5	K12-S6 K12-S7
	Modified for 1,000 SSU to 5,000 SSU and 200°F.....			1	512980-106
	Modified for 5,000 SSU to 10,000 SSU and 200°F.....			1	512980-107
130	Dowel.....			13	502945-001
131	Screw, 5/8-11 X 2-1/4", Drilled.....			12	503665-001
132	Sleeve, Lower Rotor Bearing.....			1	512964-001
133	Washer.....			12	513138-001
134	Screw, 5/16-18 x 5/8", Drilled.....			18	640353-001
135	Screw, #10-32 x 3/8".....			2	643339-401
136	Screw, Adjusting.....			1	512956-001
137	Screw, Pin Clamp, 3/8-16 x 1-1/4", Drilled.....			12	660248-404
138	Screw, Rotor Gear Plate 1/2-13 x 1-3/4", Drilled.....			6	503664-001
139	Spacer, Lower Rotor Bearing.....			1	512967-001
140	Spacer, Upper Rotor Bearing.....			1	512966-001
141	Washer, Flat.....			1	641837-401
142	Washer, Flat.....			2	006929-001
143	Screw, 3/8-16 x 1-1/4".....			4	002238-401
144	Screw, 5/16-18 x 7/8".....			6	009563-400
145	Screw, Body to Block, 5/8-11 x 2-1/4".....			3	640206-006
146	Screw, Cover, and Base, 5/8-11 x 2-1/4".....			32	640206-006
147	Screw, Rotor Shaft, 3/4-10 x 2-1/4".....			1	641079-401
148	Screw, Set, 1/4-20 x 1/4".....			1	006538-001
149	Shaft, Pinion with Spacer.....			1	513159-001
150	Sleeve Assembly:				
	Standard.....			1	512950-001
	LPG.....			1	533113-001
151	Bushing:				
	Standard.....			1	642242-404
	LPG.....			1	533093-001
152	Bushing, Flanged:				
	Standard.....			1	641077-401
	LPG.....			1	533094-001
153	Washer, Flat.....			1	005500-401
154	Washer, Flat.....			1	002801-400
155	Rotor Lifting Lug.....			A/R	551919-001

Inner Mechanism General Assembly Numbers

Barrel Geared, Standard.....	513167-091
Barrel Geared, All Iron Trim.....	513167-092
Barrel Geared, LPG Trim.....	513167-093
Hectoliter Geared, Standard.....	513167-891
Hectoliter Geared, All Iron Trim.....	513167-892
Hectoliter Geared, LPG Trim.....	513167-893

+ Recommended stock.

R Indicates change since last revision.

A/R As required.

@1 Note 1: When ordering, include product temperature range, specific or API gravity, API table used, and meter and gearing the calibrator is to be used in conjunction with.

@2 Note 2: See Form No. P0605.* for component parts.

@3 Note 3: Only standard gearing is listed. For additional gearing combinations, see Gear Train Bulletin SS01027.

* The latest edition is indicated by a 2-digit postscript (e.g., .01, .02, etc.).

The specifications contained herein are subject to change without notice and any user of said specifications should verify from the manufacturer that the specifications are currently in effect. Otherwise, the manufacturer assumes no responsibility for the use of specifications which may have been changed and are no longer in effect.

Headquarters:

500 North Sam Houston Parkway West, Suite 100, Houston, TX 77067 USA, Phone: +1 (281) 260-2190, Fax: +1 (281) 260-2191

Gas Measurement Products:

Houston, TX USA +1 (281) 260-2190
Thetford, England +44 (1842) 82-2900
Kongsberg, Norway +47 (32) 286-700
Buenos Aires, Argentina +54 (11) 4312-4736

Integrated Measurement Systems:

Corpus Christi, TX USA +1 (361) 289-3400
Kongsberg, Norway +47 (32) 286-700
San Juan, Puerto Rico +1809 (787) 274-3760
United Arab Emirates, Dubai +971 (4) 331-3646

Liquid Measurement Products:

Erie, PA USA +1 (814) 898-5000
Los Angeles, CA USA +1 (310) 328-1236
Slough, England +44 (1753) 57-1515
Ellerbek, Germany +49 (4101) 304-0
Barcelona, Spain +34 (93) 201-0989
Moscow, Russia +7 (495) 564-8705
Melbourne, Australia +61(3) 9807-2818

Beijing, China +86 (10) 6500-2251
Singapore +65 6861-3011
Chennai, India +91 (44) 450-4400

Visit our website at www.fmctechnologies.com/measurementsolutions