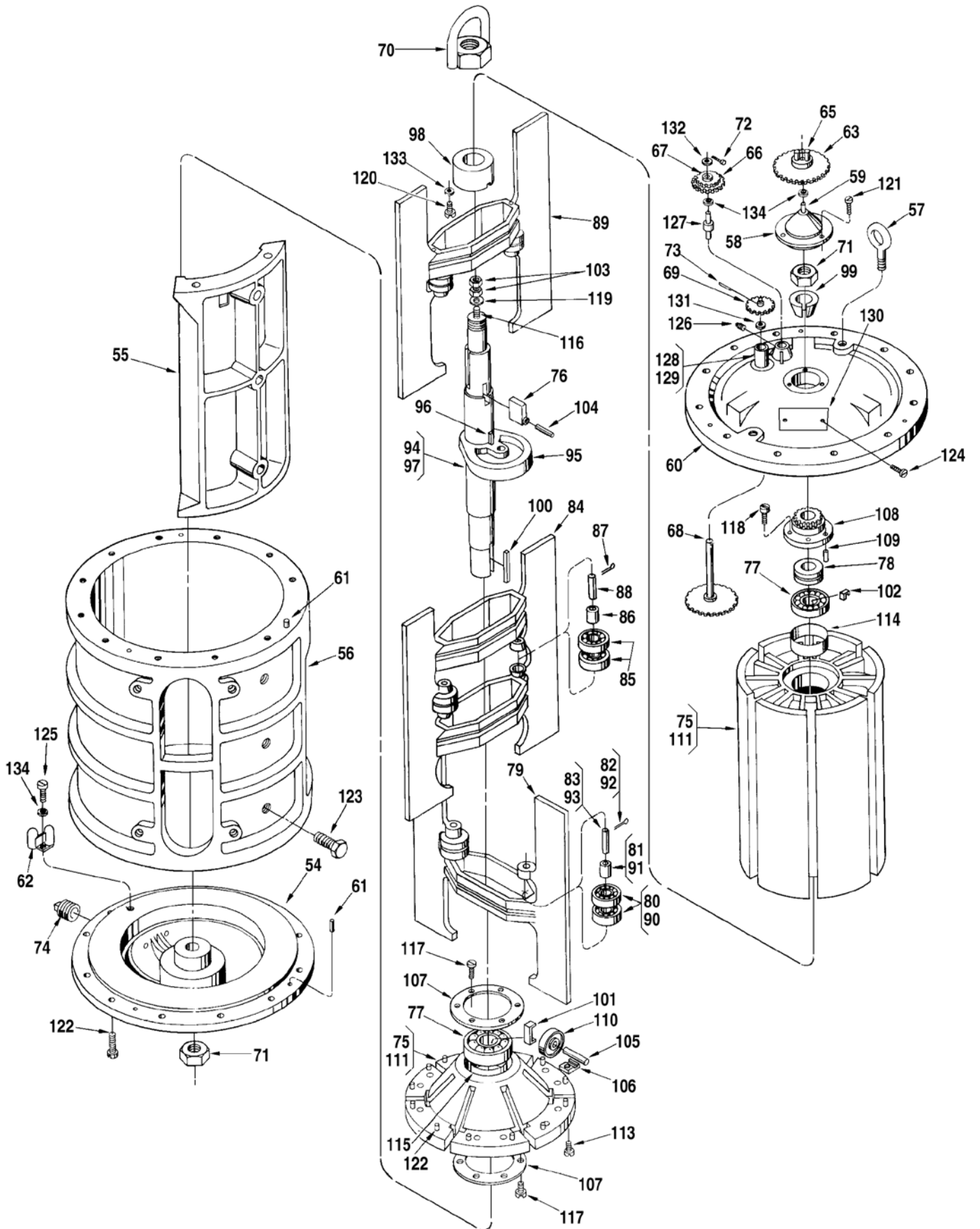


# Inner Mechanism



Item	Description	Qty.	JB10-S1	JB10-S3 JB10-S5	JB10-S6 JB10-S7
1	Adapter, Calibrator Adjusting .....	1	.....	.....	512372-001
2	Adapter:				
	Standard and ATC .....	1	518350-001	518350-002	515755-001
	ATG .....	1	506123-002	506123-003	516608-001
3	Blank, Snap In:				
	S6 and S7 .....	1	.....	.....	015533-401
4	Bolt, Eye .....	2	643877-401	065433-005	065433-005
5	+ Calibrator:				
	Manual .....	1	512059-001	512059-001	512059-001
	With ATC (Standard) .....	1	512060-001	512060-001	512060-001
	@1 With ATC (Special Temperature or API) .....	1	516130-xxx	516130-xxx	516130-xxx
	Dummy Calibrator .....	1	516105-001	516105-001	516105-001
6	Cap, Pipe .....	1	.....	.....	640259-002
7	Clamp, Oil Tube.....	1	003905-001	003905-001	003905-001
8	Coupling Assembly:				
	Standard, Used on 3/16" Shaft.....	1	005969-001	005969-001	005969-001
	Used on Xmitters with 1/4" Shaft.....	1	005969-002	005969-002	005969-002
9	Pin .....	1	003540-001	003540-001	003540-001
10	Coupling, Drive .....	1	072103-001	072103-001	072103-001
11	Cover:				
	S7 Only .....	1	.....	.....	517561-001
	All Others .....	1	500283-001	504044-001	517560-001
12	Cover, Knob .....	1	003553-001	003553-001	003553-001
13	Gasket, Cover Plate.....	1	003834-001	003834-001	003834-001
14	+ Gasket, Packing Gland .....	1	011337-001	011337-001	.....
15	+@2 Gland, Packing:				
	Buna-N.....	1	500351-001	009652-001	515849-001
	Teflon .....	1	500351-002	009652-002	515849-002
16	Housing Assembly, Outer:				
	S1, S5, and S6 .....	1	515176-001	536437-001	517568-002
	S3 and S7 .....	1	.....	554270-001	517569-002
17	Lubrication Assembly.....	1	.....	503554-001	.....
18	Nipple, Pipe:				
	Standard.....	1	.....	.....	643338-402
	NACE .....	1	.....	.....	645264-401
19	Nut, Hex Heavy:				
	S7 Only .....	48	.....	.....	642148-409
	All Others .....	48	006258-400	006385-400	006385-400
20	Oiler .....	1	006588-001	006588-001	.....
21	+ O-Ring, Cover:				
	Buna-N.....	1	511874-001	504001-001	517552-001
	Viton .....	1	511874-002	504001-002	517552-002
22	+ O-Ring, Packing Gland:				
	Buna-N.....	1	.....	.....	640888-001
	Viton .....	1	.....	.....	640894-001
23	Pin, Locating Dowel .....	2	003348-001	003348-001	003348-001
24	Pin, Groove, 5/64 x 1/2" .....	1	006053-002	006053-002	006053-002
25	Plate, Caution .....	1	006571-001	006571-001	006571-001
26	Plate, Cover .....	1	003440-001	003440-001	003440-001
27	* Plate, Lubrication .....	1	.....	517715-002	515873-001
28	Plug, Pipe, 1/2" NPT:				
	Standard.....	2	006505-002	006505-002	006505-002
	NACE .....	2	.....	645242-402	645242-402
29	Plug, Pipe, 2" NPT:				
	Standard.....	1	006759-002	006759-002	.....
	NACE, S3.....	1	.....	645242-408	.....

Item	Description	Qty.	JB10-S1	JB10-S3 JB10-S5	JB10-S6 JB10-S7
30	Screw, Adapter Cover .....	2	642043-432	642043-432	642019-416
31	Screw, Base Plate, #10-32 x 7/8" .....	2	640835-001	640835-001	640835-001
32	Screw, Calibrator Mount, #6-32 x 5/16" .....	2	006048-002	006048-002	006048-002
33	Screw, Cover Plate, #10-32 x 3/8" .....	2	006045-002	006045-002	006045-002
34	Screw, Drive, Caution Plate .....	8	009880-400	009880-400	009880-400
35	Screw, Knob Cover, #10-24 x 3/4" .....	2	006481-003	006481-003	006481-003
36	Screw, Nozzle to Inner Mech:				
	5/8-11 x 2" .....	4	643700-401	643700-401	.....
	5/8-11 x 3-1/4" .....	4	.....	.....	642061-409
	NACE .....	4	.....	645192-401	645265-401
37	Screw, Packing Gland:				
	5/16-18 x 1-1/4" .....	3	006511-002	006511-002	.....
	7/16-14 x 1-1/2" .....	4	.....	.....	006410-002
38	+ Seal, Lead and Wire .....	2	001627-400	001627-400	001627-400
39	Shaft Assembly, Calibrator:				
	S3, S5, and S6 .....	1	.....	501972-001	517553-001
	S7 .....	1	.....	.....	517553-002
40	Coupling, Lower Drive .....	1	.....	503408-001	503408-001
41	Coupling, Upper Drive .....	1	.....	501970-001	501801-002
42	Shaft:				
	S3, S5, and S6 .....	1	.....	501971-001	517573-001
	S7 .....	1	.....	.....	517573-002
43	Pin, Groove, 5/64 x 1/2" .....	2	.....	006053-002	006053-002
44	Stem Assembly, Adjusting .....	1	009838-001	009838-001	009838-001
45	Ball .....	2	006427-001	006427-001	006427-001
46	Plate, Base .....	1	003552-001	003552-001	003552-001
47	Plate, Retainer .....	1	003556-001	003556-001	003556-001
48	Spring, Knob .....	2	003557-001	003557-001	003557-001
49	Stem, Adjusting .....	1	003551-001	003551-001	003551-001
50	Stud:				
	S7 Only .....	24	.....	.....	665432-404
	All Others .....	24	065357-001	640446-001	640446-404
51	Tube, Oil .....	1	514658-001	514658-001	514658-001
52	Washer:				
	Standard .....	4	514584-001	514584-001	514584-001
	NACE, S3 .....	1	.....	514584-002	.....
53	Washer .....	2	.....	.....	002917-400

**Inner Mechanism**

Item	Description	Qty.	Part Number
54	Base .....	1	500186-002
55	Block:		
	Standard .....	1	536590-001
	Hi-Viscosity – For 1,000 SSU to 3,000 SSU .....	1	536590-201
	Hi-Viscosity – For 1,000 SSU to 5,000 SSU .....	1	536590-202
	Hi-Viscosity – For 5,000 SSU to 10,000 SSU .....	1	536590-203
56	Body .....	1	515174-001
57	Bolt, Eye .....	2	643877-401
58	Cap, Adjusting Screw .....	1	536276-001
59	Shaft, Drive Gear .....	1	003569-001
60	Cover .....	1	536277-001
61	Dowel, Cover and Base .....	2	501205-001
62	Fitting, Pitot .....	1	072186-001

Item		Description	Qty.	Part Number
63	@3	Gear, Calibrator Drive:		
		Barrels, Standard and All Iron .....	1	504194-001
		Barrels, LPG.....	1	536529-001
		Hectoliters, Standard and All Iron .....	1	515304-001
		Hectoliters, LPG .....	1	536533-001
64	*	Bushing:		
		Standard and All Iron .....	1	065311-001
		LPG .....	1	512797-001
65		Pin .....	2	500418-001
66	@3	Gear, Idler:		
		Barrels, Standard and All Iron .....	1	516304-001
		Barrels, LPG.....	1	536528-001
		Hectoliters, Standard and All Iron .....	1	515302-001
		Hectoliters, LPG .....	1	536532-001
67		Bushing, LPG .....	1	512797-001
68		Gear, Jackshaft.....	1	500225-001
69	@3	Gear, Jackshaft Pinion:		
		Barrels and Hectoliters.....	1	500704-001
		Imperial Gallons .....	1	512249-001
70		Lug, Lifting, Rotor Assembly.....	1	552125-001
71		Nut, Rotor Shaft, 1-1/2"-12 .....	2	641997-402
72		Pin, Cotter, 1/16 x 1/2".....	1	001095-401
73		Pin, Groove, 3/32 x 1/2" .....	1	006136-002
74		Plug, Pipe, 1/2" NPT .....	1	006505-002
75		Rotor and Blade Assembly:		
		Standard.....	1	537691-001
		All Iron .....	1	536279-002
		LPG .....	1	537691-003
76		Bar, Adjusting .....	1	536440-001
77	+	Bearing, Rotor:		
		Standard and All Iron .....	2	513168-001
		LPG.....	2	513168-002
78	+	Bearing, Thrust:		
		Standard and LPG .....	1	643999-401
		All Iron.....	1	644010-401
79	+	Blade Assembly, Lower:		
		Standard and LPG .....	1	536266-001
		All Iron.....	1	537714-001
		Std. – Modified for 1,000 SSU to 3,000 SSU .....	1	536266-101
		Std. – Modified for 1,000 SSU to 5,000 SSU .....	1	536266-102
		Std. – Modified for 5,000 SSU to 10,000 SSU .....	1	536266-103
		Std. – Modified for 200°F Max.....	1	536266-104
		Std. – Modified for 1,000 SSU to 3,000 SSU and 200°F.....	1	536266-105
		Std. – Modified for 1,000 SSU to 5,000 SSU and 200°F.....	1	536266-106
		Std. – Modified for 5,000 SSU to 10,000 SSU and 200°F.....	1	536266-107
		A.I. – Modified for 5,000 SSU to 10,000 SSU .....	1	537714-103
80	+	Bearing, Blade:		
		Nylon Retainer .....	4	644412-405
81		Bushing, Blade .....	2	512353-001
82		Pin, Cotter, 3/32 x 1-1/4" .....	2	006373-001
83		Shaft, Blade Bearing .....	2	551361-001

Item		Description	Qty.	Part Number
84	+	Blade Assembly, Middle:		
		Standard and LPG .....	1	536263-001
		All Iron .....	1	536587-001
		Std. – Modified for 1,000 SSU to 3,000 SSU .....	1	536263-101
		Std. – Modified for 1,000 SSU to 5,000 SSU .....	1	536263-102
		Std. – Modified for 5,000 SSU to 10,000 SSU .....	1	536263-103
		Std. – Modified for 200°F Max .....	1	536263-104
		Std. – Modified for 1,000 SSU to 3,000 SSU and 200°F .....	1	536263-105
		Std. – Modified for 1,000 SSU to 5,000 SSU and 200°F .....	1	536263-106
		Std. – Modified for 5,000 SSU to 10,000 SSU and 200°F .....	1	536263-107
		A.I. – Modified for 5,000 SSU to 10,000 SSU .....	1	536587-103
85	+	Bearing, Blade:		
		Nylon Retainer .....	4	644412-405
86		Bushing, Blade .....	2	512353-001
87		Pin, Cotter, 3/32 x 1-1/4" .....	4	006373-001
88		Shaft, Blade Bearing .....	2	551361-001
89	+	Blade Assembly, Upper:		
		Standard and LPG .....	1	536265-001
		All Iron .....	1	537713-001
		Std. – Modified for 1,000 SSU to 3,000 SSU .....	1	536265-101
		Std. – Modified for 1,000 SSU to 5,000 SSU .....	1	536265-102
		Std. – Modified for 5,000 SSU to 10,000 SSU .....	1	536265-103
		Std. – Modified for 200°F Max .....	1	536265-104
		Std. – Modified for 1,000 SSU to 3,000 SSU and 200°F .....	1	536265-105
		Std. – Modified for 1,000 SSU to 5,000 SSU and 200°F .....	1	536265-106
		Std. – Modified for 5,000 SSU to 10,000 SSU and 200°F .....	1	536265-107
		A.I. – Modified for 5,000 SSU to 10,000 SSU .....	1	537713-103
90	+	Bearing, Blade:		
		Nylon Retainer .....	4	644412-405
91		Bushing, Blade .....	2	512353-001
92		Pin, Cotter, 3/32 x 1-1/4" .....	2	006373-001
93		Shaft, Blade Bearing .....	2	551361-001
94	+	Cam and Shaft Assembly .....	1	536254-001
95		Cam .....	1	536251-001
96		Key .....	1	536255-001
97		Shaft .....	1	536253-001
98		Collar .....	1	536269-001
99		Cone, Shaft .....	1	536273-001
100		Key .....	1	500192-001
101		Lock, Rotor Bearing, Lower .....	1	536403-001
102		Lock, Rotor Bearing, Upper .....	1	537069-001
103		Nut, Adjusting Screw, 1/2"-20 UNF-2B .....	2	640671-001
104		Pin, Roll, 5/32 x 1" .....	1	010527-400
105		Pin, Rotor Cover Roller .....	6	500197-001
106		Plate, Rotor Cover Roller Pin .....	12	536272-001
107		Plate, Lock Assembly .....	2	512965-001
108		Plate, Rotor Gear .....	1	536268-001
109		Pin, Dowel .....	1	000004-001
110	+	Roller, Rotor Cover .....	6	500196-001
111		Rotor, Sub Assembly:		
		Standard .....	1	536259-001
		Std. – Modified for 1,000 SSU to 3,000 SSU .....	1	536259-101
		Std. – Modified for 1,000 SSU to 5,000 SSU .....	1	536259-102
		Std. – Modified for 5,000 SSU to 10,000 SSU .....	1	536259-103
112		Dowel .....	9	500415-001
113		Screw, Cap, 3/8"-16 UNC-2A, Drilled .....	8	642048-419

Item	Description	Qty.	Part Number
114	@4 Sleeve, Lower:		
	Current Style (1993 to present) .....	1	553577-001
	Previous Style (Prior to 1993) .....	1	536258-002
115	@4 Sleeve, Upper:		
	Current Style (1993 to present) .....	1	553576-001
	Previous Style (Prior to 1993) .....	1	536258-001
116	Screw, Adjusting .....	1	536274-001
117	Screw, Cap, 1/4-20 x 1/2" .....	12	006775-002
118	Screw, Cap, 3/8-16 x 1-1/4" .....	6	640367-001
119	Washer, Flat.....	1	065309-002
120	Screw, #10-32 x 3/8" Nylock .....	2	643339-401
121	Screw, Adjusting Screw Cap, 5/16-18 x 1-1/4" .....	4	006151-002
122	Screw, Body, 5/8-11 x 1-3/4" .....	24	006156-002
123	Screw, Body to Block, 1/2-13 x 1-1/2 .....	3	006097-002
124	Screw, Drive, Caution Tag.....	2	006220-002
125	Screw, Pitot, #10-32 x 1/2" .....	2	006110-002
126	Screw, Set, 1/4-20 x 1/4" .....	1	006538-001
127	Shaft, Idler Gear .....	1	500233-001
128	Sleeve, Assembly:		
	Standard and All Iron .....	1	500412-001
	LPG .....	1	512791-001
129	Bushing:		
	Standard and All Iron .....	2	519882-002
	LPG .....	2	512796-001
130	Tag, Caution.....	1	006572-001
131	Washer.....	3	014012-200
132	Washer:		
	Standard and All Iron .....	1	009615-400
	LPG .....	1	060554-001
133	Washer, Flat.....	2	006929-001
134	Washer, Lock .....	2	642482-406

### Inner Mechanism General Assembly Numbers

Barrel Geared, Standard.....	536279-091
Barrel Geared, All Iron Trim .....	536279-092
Barrel Geared, LPG Trim .....	536279-093
Hectoliter Geared, Standard .....	536279-291
Hectoliter Geared, All Iron Trim.....	536279-292
Hectoliter Geared, LPG Trim.....	536279-293

\* Not illustrated.

+ Recommended stock.

R Indicates change since last revision.

@1 Note 1: When ordering, include meter model and gearing, temperature and API gravity, and table.

@2 Note 2: See Form No. P0605.\* for component.

@3 Note 3: Only standard gearing is listed. For additional gearing combinations, see Gear Train Bulletin AB10123.

@4 Note 4: Apply a small amount of Loctite (Part No. 645001-401) to sleeve before installing in rotor.

Revisions included in P0552.08 Issue/Rev. 0.8 (6/11):  
Total Revision.

The specifications contained herein are subject to change without notice and any user of said specifications should verify from the manufacturer that the specifications are currently in effect. Otherwise, the manufacturer assumes no responsibility for the use of specifications which may have been changed and are no longer in effect.

Contact information is subject to change. For the most current contact information, visit our website at [www.fmctechnologies.com/measurementsolutions](http://www.fmctechnologies.com/measurementsolutions) and click on the "Contact Us" link in the left-hand column.

---

**Headquarters:**

500 North Sam Houston Parkway West, Suite 100, Houston, TX 77067 USA, Phone: +1 (281) 260 2190, Fax: +1 (281) 260 2191

**Measurement Products and Equipment:**

**Erie, PA USA** +1 (814) 898 5000

**Ellerbek, Germany** +49 (4101) 3040

**Barcelona, Spain** +34 (93) 201 0989

**Beijing, China** +86 (10) 6500 2251

**Buenos Aires, Argentina** +54 (11) 4312 4736

**Burnham, England** +44 (1628) 603205

**Dubai, United Arab Emirates** +971 (4) 883 0303

**Los Angeles, CA USA** +1 (310) 328 1236

**Melbourne, Australia** +61 (3) 9807 2818

**Moscow, Russia** +7 (495) 5648705

**Singapore,** +65 6861 3011

**Integrated Measurement Systems:**

**Corpus Christi, TX USA** +1 (361) 289 3400

**Kongsberg, Norway** +47 (32) 286700

**Dubai, United Arab Emirates** +971 (4) 883 0303

**Visit our website at [www.fmctechnologies.com/measurementsolutions](http://www.fmctechnologies.com/measurementsolutions)**