



Receipt of Equipment

When the equipment is received, the outside packing case should be checked immediately for any shipping damage. If the packing case has been damaged, the local carrier should be notified at once regarding his liability. Carefully remove the unit from its packing case and inspect for damaged or missing parts.

If damage has occurred during shipment or parts are missing, a written report should be submitted to the Customer Service Department, Smith Meter Inc., Erie, Pennsylvania 16514.

Prior to the installation, the unit should be stored in its original packing case and protected from adverse weather conditions and abuse.

Caution:

This equipment generates, uses, and can radiate radio frequency energy and, if not installed and used in accordance with this Instruction Manual, may cause interference to radio communications. It has not been tested to comply with the limits for a Class A computing device pursuant to Subpart J of Part 15 of FCC Rules, which are designed to provide reasonable protection against such interference when operated in a commercial environment. Operation of this equipment in a residential area is likely to cause interference, in which case the user, at his own expense, will be required to take whatever measures may be required to correct the interference.

Warning

These preset devices must be used with fail-safe backup equipment to prevent accidental runaway delivery of product. Failure to provide backup equipment could result in personal injury, property loss and equipment damage.

United States NIST Handbook 44 UR.3.5.1. and UR.3.5.2.

For compliance to United States NIST Handbook 44 UR.3.5.1. and UR.3.5.2. invoices printed using a mechanical numeric-only printer (e.g., Smith Load Printer) must contain in preprinted form, the following information:

- a. Volume corrected to 60 degrees F
- b. API/C of E _____
- c. Temperature _____
- d. Gross Volume _____

where the API/C of E, temperature, and gross volume may be hand-written on the ticket. Refer to Handbook 44, UR.3.5.1. and UR.3.5.2. for current requirements.

Table of Contents

Section I - Introduction	1
Product Description	1
How To Use This Manual	2
Before Beginning Operations	3
Section II - Operations	4
Run Mode	4
Keypad Functions	4
Overview	4
Master/Slave S-Mass Meter Communications	5
Master/Slave Smart Additive Communications	5
Meter Position Disabled/Not Installed	5
Remote Start/Stop	6
Quad OPV	6
Additive Monitoring	6
Additive Injector Selection	6
Stand-alone Mode	6
Standby Mode	7
Communications EIA-485	8
Communications EIA-485	8
Local Ticket Printer	9
Remote Ticket Printer	11
Section III - Dynamic Displays	14
Keypad Functions	14
Entry to Dynamic Displays	14
Dynamic Display Reference	15
00 - Time & Date	15
01 - Flow Rate (Units/Min)	15
02 - Flow Rate (Units/Hr)	15
03 - Temperature	15
04 - API	15
05 - Reference Density	15
06 - Relative Density	15
07 - Pressure and Vapor Pressure	15
08 - Meter Factor	15
09 - Temperature Correction	15
10 - Correction for Pressure on Liquid	15
11 - Density	16
12 - Raw Volume	16
13 - Gross Volume	16
14 - Gross @ Standard Temperature Volume	16
15 - Net Transaction	16
16 - Mass Transaction	16
17 - Additive Injector #1 Volume	16
18 - Additive Injector #2 Volume	16
19 - Additive Injector #3 Volume	16
20 - Additive Injector #4 Volume	16
21 - Valve Position	16
22 - Load Average Temperature	16
23 - Load Average Pressure	17
24 - Load Average Density	17
25 - Load Average Meter Factor	17
26 - Raw Non-resettable Totals	17
27 - Gross Non-resettable Totals	17
28 - Gross @ Standard Temperature Non-resettable Totals	17

Table of Contents

29 - Net Non-resettable Totals	17
30 - Mass Non-resettable Totals	17
31 - Additive Injector #1 Non-resettable Totals	17
32 - Additive Injector #2 Non-resettable Totals	17
33 - Additive Injector #3 Non-resettable Totals	17
34 - Additive Injector #4 Non-resettable Totals	18
35 - Input Module Status *	18
36 - Contact Output Status (Side 1) *	18
37 - Contact Output Status (Side 2) *	18
38 - Last Power Failure *	18
39 - Additive Injector #1 Rate *	18
40 - Additive Injector #2 Rate *	18
41 - Additive Injector #3 Rate *	19
42 - Additive Injector #4 Rate *	19
50, 51, 52, 53, 54, 55 - Communications Diagnostics	19
Section IV - Program Mode	20
Keypad Data Entry	20
Entry to Program Mode	21
Program Directory Selection	21
Specific Directory Selection	21
Sequential Directory Selection	22
Exiting A Directory	22
Program Code Selection	22
Second and Third Digit Selection	23
Sequential Code Selection	23
Exiting Program Mode	24
Changing Program Code Parameters	24
Numeric Data	24
Options	25
Alphanumeric Data	25
Viewing the Help Messages	27
Section V - Index	28
Section VI - Related Literature	30

Section I – Introduction

Product Description

The Smith AccuLoad II is a microprocessor-based electronic preset delivery system designed to simultaneously control the loading of petroleum or chemical products through two separate loading arms.

The AccuLoad II is designed to provide dependable service over a wide range of operating conditions. It is easy to operate and maintain, provides optimum measurement accuracy, display of current actual conditions, is easy to communicate with, and performs many loading system control functions.

Ease of operation and service permits rapid training of operators and service personnel. All entries into AccuLoad II are made quickly and easily through the rugged external keypad that is shared by both preset positions. Every keystroke is monitored and assistance is provided by auto prompting displays. Built-in "Help Messages" provide valuable information to aid in the programming of the instrument without resorting to a thick manual. Service is simplified with self diagnostics that show parameters in need of adjustment or hardware that is malfunctioning.

Optimum measurement accuracy is attained through the continuous linearization of the meter factor with changes in flow rates. Volumetric correction is calculated directly from published API equations providing precise volumetric measurement results. Precise automatic temperature, pressure compensation, and density correction are also available in the instrument.

The dynamic displays of the current actual operating conditions of the system provide the operator with valuable information while the system is operating. Some of the information that is available through the dynamic displays are the non-resettable totals along with the following:

- Current Time and Date
- Current Flow Rate (units/min.)
- Current Flow Rate (units/hour)
- Current Temperature
- Current API
- Reference Density
- Relative Density at Reference
- Current Pressure and Vapor Pressure
- Current Meter Factor
- Current CTL
- Current CPL
- Current Density
- Current Raw Transaction Totals

- Current Gross Transaction Totals
- Current Gross at Standard Temperature Transaction Totals
- Net Transaction Totals
- Mass Transaction Totals
- Injector Transaction Totals
- Current Valve Status & Commanded Position
- Load Average Temperature
- Load Average Pressure
- Load Average Density
- Load Average Meter Factor
- Raw Non-resettable Totals
- Gross Non-resettable Totals
- Gross at Standard Temperature Non-resettable Totals
- Net Non-resettable Totals
- Mass Non-resettable Totals
- Additive Injector Non-resettable Totals
- Input Module Status
- Contact Output Status (Side 1)
- Contact Output Status (Side 2)
- Last Power Failure - Time and Date*
- Additive Injector Rates *
- Communication Diagnostics

Note: * AccuLoad II-GRK Rev. 04 and above firmware

Significant communication capability is available from the standard AccuLoad II. The instrument is programmable for Polling, Polling and Authorization or complete Remote Control via communications. The EIA-232 communication port can be used to multi-drop up to 32 meter positions to an ASCII printer for printing load tickets or it can be used to network up to 32 meter positions to an automation system. Also available is an additional communication port that is EIA-485 interfaced. When used with a smart printer (one that will signal when it is out of paper, cover is open etc.) the AccuLoad II can alarm and display the reason for the printer not working. The "speak when spoken to" protocol of AccuLoad II is modeled after the ISO Standard 1155. This allows quick access by an automation computer for operational and transaction information. The AccuLoad II also has a built-in communication analyzer to aid in the development and troubleshooting of communications. The AccuLoad II-GRK revision 04 and above firmware also has the capability of communicating directly with the new additive injector systems from Gate City (Blend Pak and Mini-Pak) and Titan Industries (PAC-3). Using either the EIA-232 or EIA-485 communication ports the AccuLoad II will communicate with the Additive Injector System throughout the batch or the transaction requesting the status of the injector and the vol-

Section I – Introduction

ume of additive that has been injected. Also developed with the additive communications is a pass-through mode of communications that will allow the supervisory computer to talk directly to the additive system through the AccuLoad. For additional information on the AccuLoad II communications, see the Communications Manual (Bulletin MN06040).

Several loading system control functions are provided by AccuLoad II: Additive Injection, Pump Control, Alarm Control, Valve Control, Back Pressure Control, and Automatic Adjustment of Final Trip Point.

- Up to four different additive injectors can be simultaneously paced or controlled through communications per preset position.
- AccuLoad II, if so programmed, will automatically calculate and adjust the additive pulse output to be stopped at the first trip point of the product with the same number of pulses as if the additive output were stopped at the end of the batch.*
- The AccuLoad II will monitor and totalize the volume of additive injected by the four additive injectors if the additive monitoring option is purchased.
- A contact is available to start and stop a pump or other electrically operated equipment as well as program codes that will set the time delay of that start or stop.
- A programmable alarm contact is available. It can be closed on a Valve Fault, on any alarm or not at all depending on how it is programmed. Revision 4 and above supports a second alarm output. This output is fully configurable as to which alarms affect it.
- The AccuLoad II contains the intelligence to control a Smith Model 210 or 215 Digital Control Valve which will provide low flow start and multi-stage shut-down.
- AccuLoad II contains the intelligence to automatically reduce the flow of product and ensure the flow is within the pumping capabilities of the system.
- AccuLoad II, if so programmed, will automatically adjust the final trip point of the batch (preset).

Critical functions such as: minimum flow rate, excess flow rate, temperature detection, preset volume overrun and memory retention are monitored by internal circuits. Any failure will signal closure of the valve. Should the valve fail to close within 10 seconds after having been signaled, a contact is closed.

This can be wired through external relays to shut off the pump and/or kill power circuits.

Note: * AccuLoad II-GRK Rev. 04 and above firmware

Environmental fluctuations within specified limits have virtually no effect on the operation of this control system. AccuLoad II is available in an explosion-proof housing for hazardous locations or a non-explosion-proof housing for non-hazardous or general purpose locations. (See Bulletin SS06012 for Specifications.)

How To Use This Manual

This manual is to be used for AccuLoad II-GRK firmware. If a feature or statement applies to only a certain release firmware, it will be noted.

This manual is divided into seven sections: Introduction, Operations, Dynamic Displays, Program Mode, Program Codes, Index, and Related Publications.

"Operations" describes the daily operation of AccuLoad II and what is required of an operator to effectively load the product.

"Dynamic Displays" describes the information that can be displayed by AccuLoad II while in the "READY" state or in the Run Mode.

"Program Mode" describes how to get into the Program Mode, Program Directory Selection, Program Code Selection, how to change a program parameter and how to view the Help Messages.

"Program Codes Section" gives an outline description of each program code available in the instrument. For a brief description of each code, the information or options required for each code, and a place to record the parameters entered in each preset position, see Bulletin AB06033. For detailed information on each code, see Bulletin MN06063L.


The examples presented in this manual are for clarity and your convenience. The values might vary for your particular installation and/or operation.

Section I – Introduction

Before Beginning Operations

Before actual operations begin, it is essential that valid entries be made for all program codes. To assist in programming the AccuLoad II, a Programming Workbook (Bulletin AB06033) is available for recording the values entered in the program for each preset position. Access to the program codes is limited to authorized personnel by use of a security code and two contact closures. The first contact closure will allow the operator to view all program codes and change the program codes that have a second digit of zero through three. The second contact closure is required to change the program codes that have a second digit of four through seven. This additional security is for Weights & Measures purposes. A program code with the second digit of eight will be programmable in either the Program or Weights and Measures protection mode. Any program code with a second digit of nine has a special high-security protection. This requires the second contact closure and an external jumper to be attached to test points 9 and 10 on the computer board.

The AccuLoad II contains two side by side 1 line by 24 character, 5X7 dot matrix vacuum fluorescent displays. When powered on, both displays will illuminate. The left-hand display (preset position 1) will show if the status of the internal memories (Ram, Data, ROMs) are good or bad. Then it will show that the instrument is being initialized. The right-hand display (preset position 2) will display the message:



Please Stand By

After the testing is complete and the instrument is initialized, both displays (preset position 1 and preset position 2) will read as follows before the product ID is programmed in the instrument:



SMITH Ready 12:52:16

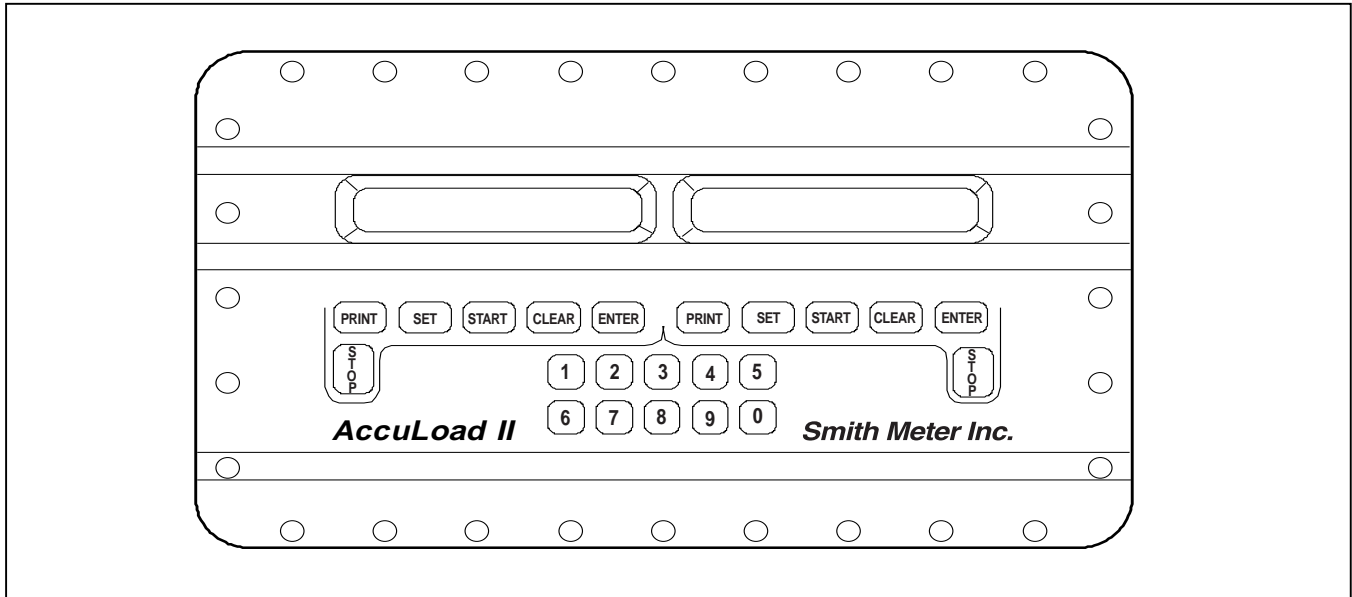
Be sure that AccuLoad II is functioning properly and that the operator has read and understands the instructions contained in this manual.

Section II – Operations

Run Mode

This is the normal driver controlled mode of operation where a preset volume of product is preset into AccuLoad II. The flow is then initiated, controlled, and stopped by AccuLoad II at the end of the batch.

All preset and control operations can be performed either locally through the keypad or through communications. The operation described in this section is based on AccuLoad II being operated locally through the keypad. For information on operating through communications refer to the AccuLoad II Communications Manual MN06040.



Keypad Functions

The pushbuttons on the keypad perform the following preset functions in the Run Mode:

0-9	Used for presetting the quantity to be delivered.
CLEAR	Used to clear incorrect entries and to exit from the dynamic displays.
ENTER	Used for dynamic displays only.
PRINT	Signals completion of transaction when "Print Key" option is selected in program code 301.
SET	Used to initiate the preset sequence.
START	Used to start the delivery providing all external permissive senses are satisfied.
STOP	Used to stop the delivery at any time.

Overview

The "RUN" Mode for each preset position permits the operator to select and start the preset volume and to observe the dynamic variables such as flow rate, temperature, volume correction factors, transaction totals and non-resettable totals. Normal start-up, flow control and shut-down sequences, along with operator requested stops, will be independent for each preset position.

Preset volumes can not be entered simultaneously to both preset positions since the numeric keypad is shared by both preset positions. In any mode of operation with AccuLoad II, the data entered through the numeric keypad is assumed to be associated with the last preset position function key pressed. For example, if the "SET" button is pressed for preset position 1 any keypad data entered will be assumed to be for preset position 1 until the next function button is pressed.

Product delivery is controlled by several program code entries made for each preset position. Functions such as first high flow rate, second high flow rate, low flow start, first and second trip points will be automatically controlled and monitored per the

Section II – Operations

program entries. Safety and volume accuracy functions such as excess high flow, low flow, overrun and temperature probe failure are also monitored per their program values. If at any time a fatal alarm occurs (one that causes AccuLoad II to shut-down) while in the Ready State or the Run Mode, AccuLoad II will attempt to shut-down the flow and a message indicating an alarm condition will alternate with the current display.

When the delivery is completed, depending on how AccuLoad II is programmed, the transactions for the preset position used could be ended by removal of the ticket from the ticket printer, pressing the "PRINT" button associated with that preset position, or by a communication command. If the "STOP" button for the preset position is pressed during flow the display, depending on how the unit is programmed, will show:



100 Restart in 5

OR



Press Start to Continue

If the STOP/START delay is programmed, the preset position will display "100 Restart in 5" where 100 is the volume of product that has been delivered and the 5 is the number of seconds (that have been programmed in code 215) before the operator can restart the batch. Once the time-out has been reached, the display will then read "Press Start to Continue". The operator can then press "START" and continue the batch. If program code 215 is programmed to disable the time-out, the display will read "Press Start to Continue" as soon as the operator presses "STOP". Then it will then alternate with the preset display.

Master/Slave S-Mass Meter Communications (Rev. 04 and above firmware)

A feature has been added to the AccuLoad II-GRK firmware that provides master/slave communication through the EIA-232 communications port (if so programmed) to an S-Mass meter equipped with the Micro-Pak Electronics. The communication interface is used to program the Micro-Pak and to retrieve the density of the product being metered which will be used in GST and mass calculations. In order to initi-

ate communications between the AccuLoad II and the S-Mass meter, program code 702 must be programmed to option 6 and program codes 457 through 465 must be properly programmed. The Micro-Pak sequence number is used to program the address for the communications between the instruments.

Master/Slave Smart Additive Communications (Rev. 04 and above firmware)

The firmware has been designed with a Master/Slave type of communications, with the AccuLoad II being the master and the Additive Injector System being the slave. The AccuLoad II constantly interrogates the Additive Injector System for a change in status. The AccuLoad can be operated with communications control over the Smart Additive Injector System or with communication/pulse control. When the AccuLoad II has communication control over the Additive System, it will constantly monitor the Additive System for its status, poll the additive totals, and signal the system when to inject the additive -- all through the communications line.

If the AccuLoad II is programmed for communication/pulse control, two lines have to be run between the Additive System and the AccuLoad II—one for the product pulses and one for the communications line. In this case, the AccuLoad II will constantly monitor the Additive System for its status and poll the additive totals. It will not signal the Additive System when to inject additive; this is done by the Additive System counting the pulses and injecting at the rate programmed by the AccuLoad.

The AccuLoad communications package has also been designed with a pass-through communications mode. In this mode of operation the supervisory computer can talk to the Additive Injector System through the communication lines that have been run to the AccuLoad II and from the AccuLoad to the Additive Injector System(s).

Meter Position Disabled/Not Installed

The AccuLoad II will contain the necessary software and hardware to operate two meter positions. This may be confusing to an operator if only one of the meter positions is currently connected and operating. For this reason program code 190 can be programmed to disable the meter position not currently

Section II – Operations

connected or in use. This program code will be under the High-security Mode. When selected, the meter not in use will display the following message:

Meter Position Not Used

If the AccuLoad II has been purchased as a single preset position either preset position #1 or preset position #2 can be programmed as the operating position. The display on the preset position not being used will display the following message:

Meter Position Not Used

Note: The position programmed must match the position that has been wired as the operating preset position.

Remote Start/Stop

Two spare permissive sense contacts are supplied in AccuLoad II that can be used for Remote Start/Remote Stop operations (codes 808 and 810 for Release 1 and Codes 801 and 804 for Release 2). To use these permissive sense contacts as Remote Start or Remote Stop, hardware jumpers must be installed on the keypad and computer boards in the proper position for correct operation. When AC power is applied to the contacts AccuLoad II will respond as though the "START" or "STOP" button has been pressed. (See the Installation Manual MN06037 for jumper positioning.)

Quad OPV

The optional Quad OPV is a hardware option that provides for a dual pulse output per each preset position. The pulse rates and type of pulses are programmable. The pulse rates are programmable between 000.1 and 999.1 units per pulse with a maximum frequency of 500 Hz.

The programmable options for the type of pulses are Raw, Gross, Gst, Net, and Mass. Each pulse can be selected on type and rate. For programming the pulse type and rates, see program codes 348 and 349 for Release 1 and codes 348 through 351 for Release 2. (For installation details see the Installation Manual MN06037.)

Note: Release 1 pulse outputs (type and rate) are not independently programmable.

Additive Monitoring

The additive injector feedback option provides the AccuLoad II with the capability to monitor the additive products that are being injected. The AccuLoad II monitors the injector feedback switches for a change of state and counts the errors and alarms if no change is detected within a programmable period. The additive feedback option uses the following inputs when installed:

Injector 1	1st/2nd High Flow
Injector 2	Printer Tray
Injector 3	Spare #1
Injector 4	Spare #2

Note: See program codes 841 through 854 for programming the additive feedback option.

Additive Injector Selection

Stand-alone Mode

When the AccuLoad II is in the Stand-alone Mode of operation, the additive selection can be programmed to be either automatic or manual, depending on how code 806 has been programmed (Release 1 firmware) or 885 has been programmed (Release 2 firmware).

Code	Description
885	Manual/Auto Additive Injector Option must be programmed to either:

"0" for auto injectors - the additive outputs that are programmed in the AccuLoad II will automatically be selected for each batch.

"2" for manual injectors prompting at the beginning of each batch.

"3" for manual injectors prompting at the beginning of each transaction.

Section II – Operations

The operation will be as follows for manual selection (code 2 or 3):

1. The driver or operator presses the "SET" key. The AccuLoad II will prompt the driver or operator as follows:

```
Select Injector#1 0 =OFF
```

2. The driver or operator is required to enter a '1' to select the additive. If selected, the display would read:

```
Select Injector#1 1 =ON
```

Note: If an error was made in selecting the additive to be "on", pressing "CLEAR" will select the additive "off".

3. After additive injector #1 has been selected to either "on" or "off" press "ENTER". The following will be displayed:

```
Select Injector#2 0 =OFF
```

4. The driver or operator repeats steps two and three until all the programmed additive outputs have been selected as either "ON" or "OFF". Press "ENTER" to store the additives that have been selected. The display will read:

```
Injectors on = #1,2,3,4
```

indicating which of the additive outputs have been selected. If none of the additives have been selected the display will read:

```
No Injectors Selected
```

Note: If the selections are incorrect press "CLEAR" and the original display will be displayed (see step 1) and the process can begin again.

Note: Any additive output that has a zero entry programmed in its corresponding program code will always be disabled and will not appear in the selection process.

5. Once the driver or operator verifies that the additives that have been selected and are displayed in step four are correct press "ENTER". The display will light up momentarily and then go to the preset display.

UNLEADED P

GAL

When the additives are selected the loading process is the same as previously described.

Standby Mode

When the AccuLoad II is in the Standby Mode of operation, the additive selection can be programmed to be either automatically or manually selected depending on how the unit is programmed. The following program codes must be programmed correctly for additive selection in the Standby Mode.

Communications EIA-232

Code **Description**
701 EIA-232 Communication Type must be programmed to either:

"1" EIA Type Terminal.

"2" EIA Type Minicomputer.

702 EIA-232 Communication Control must be programmed to either:

"2" Poll and Authorize.

"3" Remote Control.

Note: If programmed "2" Poll and Authorize the additive will be selected for each transaction. If programmed "3" Remote Control the additive will be selected for each batch.

742 Communications Time-out must have a value other than "000" programmed into it.

743 Communications Alarm Mode must be programmed to either:

"0" Standby Mode.

"2" Standby and Communication Alarm.

885 Manual/Auto Additive Injection Option must be programmed to either:

"0" for auto injectors where the additives that are programmed in the AccuLoad II will automatically be selected for each batch.

Section II – Operations

4 transaction or batch depending on how code 702 is programmed.

Communications EIA-485 (Release 04 firmware)

Code Description

704 EIA-485 Communication Type must be programmed to either:

"1" EIA Type Terminal.

"2" EIA Type Minicomputer.

705 EIA-485 Communication Control must be programmed to either:

"2" Poll and Authorize.

"3" Remote Control.

Note: If programmed "2" Poll and Authorize the additive will be selected for each transaction. If programmed "3" Remote Control the additive will be selected for each batch.

742 Communications Time-out must have a value other than "000" programmed into it.

743 Communications Alarm Mode must be programmed to either:

"0" Standby Mode.

"2" Standby and Communication Alarm.

806 Manual/Auto Additive Injection Option must be programmed to either:

"0" for auto injectors where the additives that are programmed in the AccuLoad II will automatically be selected for each batch.

"1" for manual injectors at the beginning of each transaction or batch depending on how code 702 is programmed.

Communications EIA-485

Code Description

705 EIA-485 Communication Type must be programmed to either:

"1" EIA Type Terminal.

"2" EIA Type Minicomputer.

706 EIA-485 Communication Control must be programmed to either:

"2" Poll and Authorize.

"3" Remote Control.

Note: If programmed "2" Poll and Authorize the additive will be selected for each transaction. If programmed "3" Remote Control the additive will be selected for each batch.

742 Communications Time-out must have a value other than "000" programmed into it.

743 Communications Alarm Mode must be programmed to either:

"0" Standby Mode.

"2" Standby and Communication Alarm.

885 Manual/Auto Additive Injection Option must be programmed to either:

"0" for auto injectors where the additives that are programmed in the AccuLoad II will automatically be selected for each batch.

"1" for manual injectors at the beginning of each transaction or batch depending on how code 702 is programmed.

The driver or operator selection of the additives is the same as is described in the Stand-alone Mode (see above).

Section II – Operations

Local Ticket Printer (See Flow Chart 1 on Page 12)

The description for operation with a local ticket printer described below assumes that the additive injectors are selected for automatic (code 885) and that the permissive senses are met.

Before operation the display will read:

```
UNLEADED Ready 1:07:58
```

where Unleaded is the product name which is programmable in code 181 of the General Directory. When the operator presses "SET" the display will either prompt:

```
* Please Insert Ticket *
```

Note: This prompt is programmable in the 800 Program Directory.

or if the ticket has been inserted before the "SET" button being pressed, AccuLoad II will display:

```
UNLEADED P GAL
```

A predetermined volume to be loaded is entered at the keypad. AccuLoad II will check this volume against the maximum preset volume (program code 302) and the minimum preset volume (program code 303) when the operator presses "START". If the volume is more than the minimum preset volume and less than the maximum preset volume, AccuLoad II will signal the valve to open to start the product flowing. If the volume is less than the minimum preset volume allowable, the message "Preset Batch Volume is below the Minimum required. Press CLEAR to CONTINUE" will scroll across the display until the "CLEAR" button is pressed. If the volume is more than the maximum preset volume allowable, the message "Preset Batch Volume exceeds the Maximum Permitted. PRESS CLEAR to CONTINUE" will scroll across the display until the "CLEAR" button is pressed. Press "CLEAR" again to clear the volume entered from the display. Another entry can then be made using a volume that is between the minimum and maximum allowable preset volume as programmed.

If all the permissive senses are met and an allowable preset volume is entered AccuLoad II, when the operator presses 'START', the valve will be signaled to open to begin loading the product. The volume entered is now locked into that preset position and all of the loading controls, except "STOP" and the Dynamic Displays, are inhibited.

At this time, the left and right-hand sides of the display become counters. The first through the sixth positions become an upcounter (delivery counter). The seventh position becomes a space. The eighth through tenth positions display the units of measurement. The eleventh position becomes a space. The twelfth through the seventeenth positions continuously display the original preset volume. The eighteenth position becomes a space. The nineteenth through the twenty-fourth positions become a downcounter (preset counter).

```
11000 Gal P99999 88000
```

If AccuLoad II is programmed for a blank downcounter (code 305), the last five positions will be blanked during the loading of the product.

```
11000 Gal P99999
```

AccuLoad II can be programmed (code 347) so that the preset display, delivery display, or both will alternate at a two second rate with the current correction being applied to the delivered volume (i.e., Grs, Raw, Gst @ Ref. Temp, Net @ Ref. Temp, or Mass). For example:

```
11000 Gal P99999 88000
```

will alternate with:

```
11000 Gal<Gst 60F 88000
```

if the current correction being applied to the delivery is Gross at Standard Temperature and the programmed reference temperature is 60 degrees Fahrenheit.

Section II – Operations

When the product being loaded reaches a predetermined (First Stage Trip - Code 210) value, the valve is signaled to close. If a Smith Model 210 or 215 valve is being used, the flow will ramp-down in multiple steps to assist the valve in preventing line shock. When the preset quantity is nearly reached, a final trip (code 211) occurs signaling the valve to close completely. If so programmed, AccuLoad II will automatically adjust the final stage trip point (code 212) to assure accurate delivery of the preset quantity for each load. The AccuLoad II will also control the opening and closing of the standard two-stage closure valves such as the Smith Model 296 or 299.

During normal loading, if the need arises to stop flow, the red "STOP" key can be pressed to close the valve. At this point the current batch delivery may be terminated by pressing the "SET" button. The preset display will appear and a new preset batch can be entered or the transaction may be terminated. To return the system to normal loading (i.e., return to the volume remaining to be delivered), press "START". If the "Start After Stop Delay" is programmed (code 215) the display will read:

899 Restart in 10

(i.e., code 215 is programmed for 10 seconds) when the 10 seconds have elapsed the display will alternate between the preset display:

899 Gal P 1000 101

and

Press Start to Continue

until the "START" button is pressed to resume the load. This reopens the valve to load the remainder of the preset volume.

Caution: The "STOP" button is for operator convenience only and is not intended to be used as an "Emergency Stop" or as a substitute for an emergency stop device.

If a power failure is experienced, any transaction in process will not be allowed to continue. The valve will close and remain closed until after power is restored. The display will go through the initialization process and then read:

Press Start to Continue

the operator then can restart the load to complete the batch by pressing 'START'.

Before Power Failure:

100 Gal P 1000 900

As Power Fails (left display):

*** Low Line Voltage ***

As Power Fails (right display):

** Please Standby **

After Power Returns:

Press Start to Continue

The operator can print a ticket for either a single or a multiple batch transaction. The upcounter display will accumulate the total delivery until the transaction is terminated by printing the ticket, regardless of the number of preset batches, 5 digits up to 99,999 volume units.

Flow Chart 1 is a sample of the operator procedure that is required when loading with an AccuLoad II and a local ticket printer. Please note that the flow charts are shown with the permissive senses programmed to be used for the beginning of the transaction only and not constant (see program codes 801 and 804). If they are programmed as constant, any time the contact is broken AccuLoad II would shut the system down. The flow chart is also shown with the restart after the permissives are reconnected. Being programmed in manual mode, the operator has to press "START" to continue. The unit can be programmed to automatically start when the permissives are reconnected.

Section II – Operations

Remote Ticket Printer

(See Flow Chart 2 on Page 13)

When operating with a remote ticket printer or a shared printer, AccuLoad II ignores the tray switch contact and the following occurs:

1. The AccuLoad II switches from:

UNLEADED Ready 8:07:15

TO

UNLEADED P Ga1

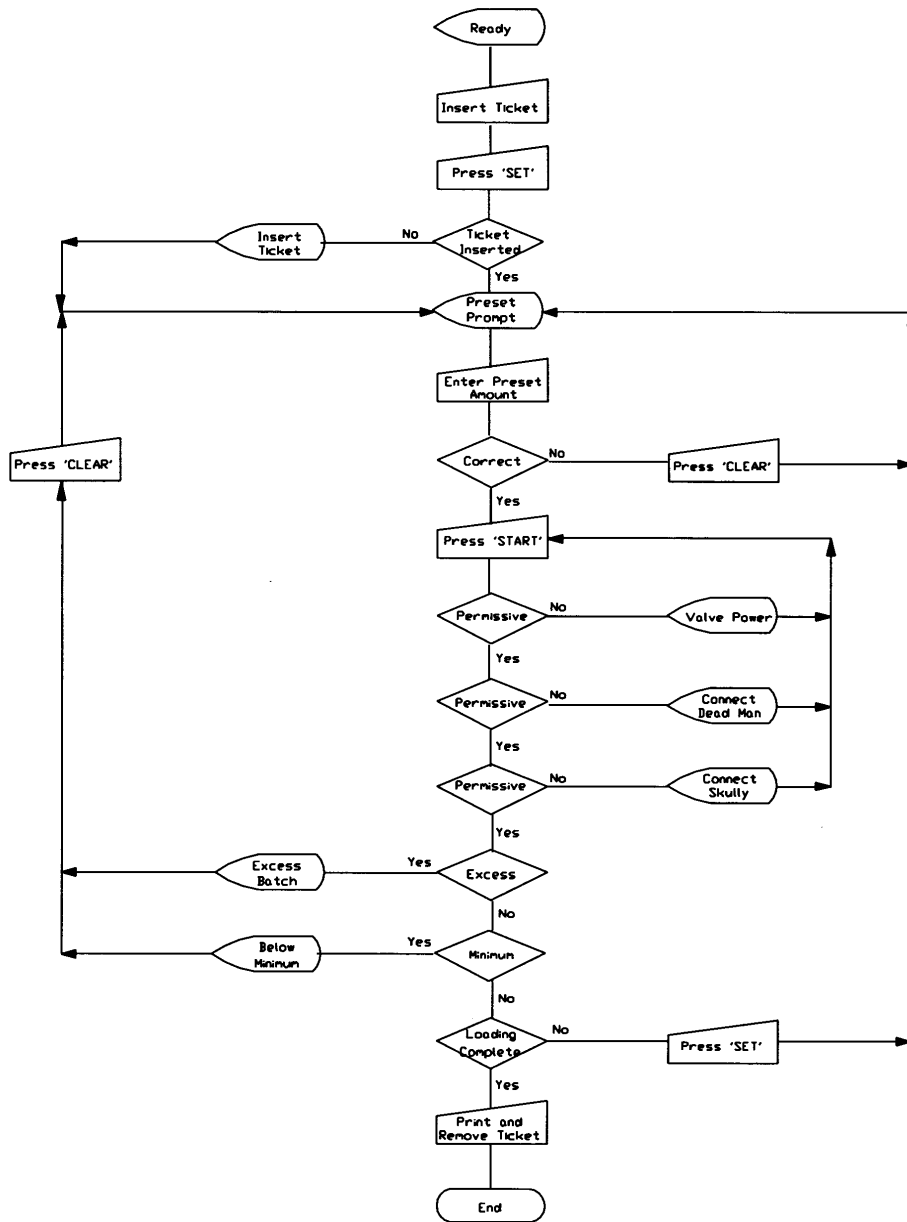
when the "SET" button is pressed. The operator then presets the volume of product required for the transaction.

2. To complete a transaction the operator presses the "PRINT" button. When the "PRINT" button is pressed the display will return to:

UNLEADED Ready 8:15:15

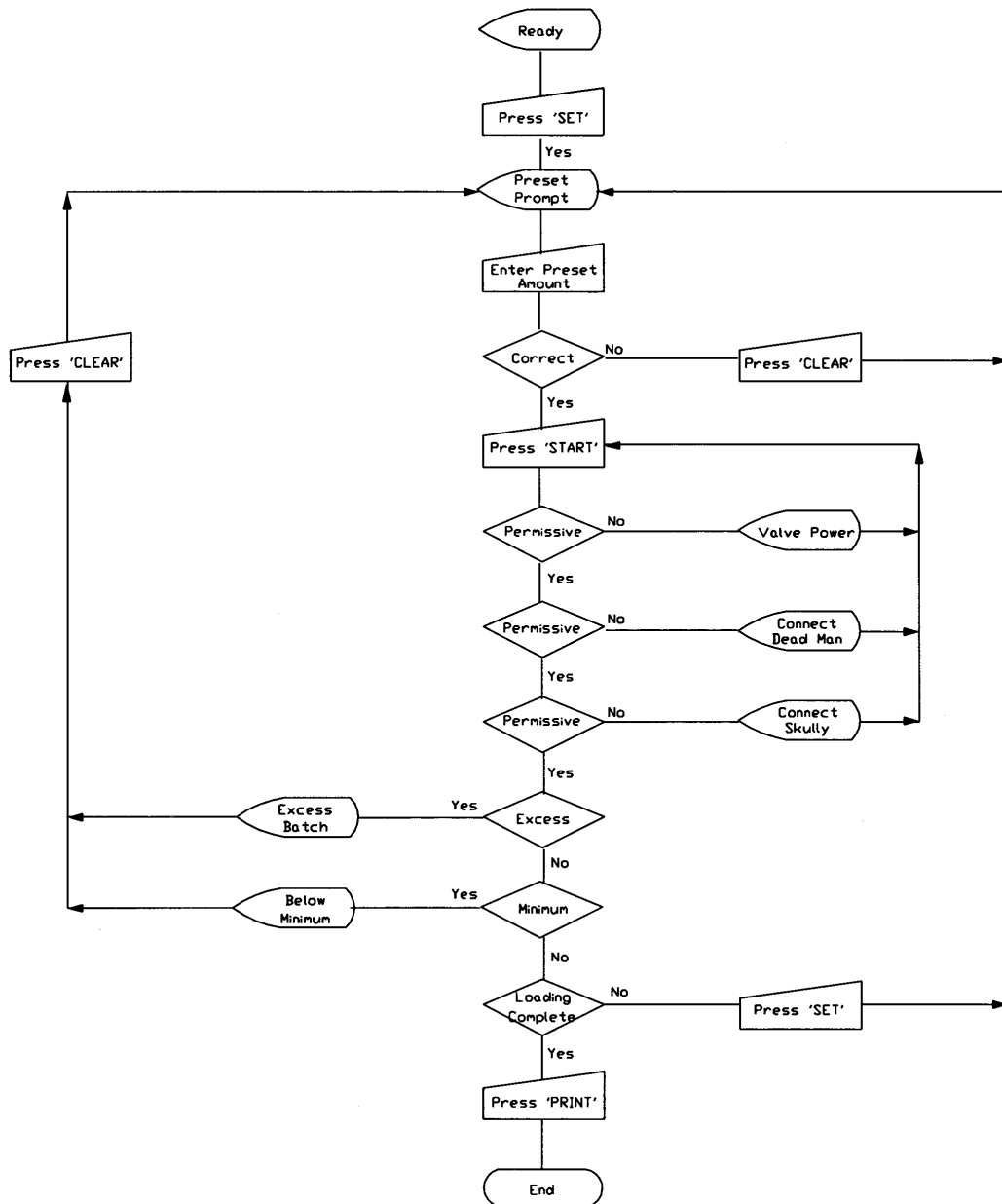
All other operations for the Remote Printer or the Shared Printer are the same as described for operation with the Local Printer.

Section II – Operations



Flow Chart 1
Loading with a Local Ticket Printer

Section II – Operations



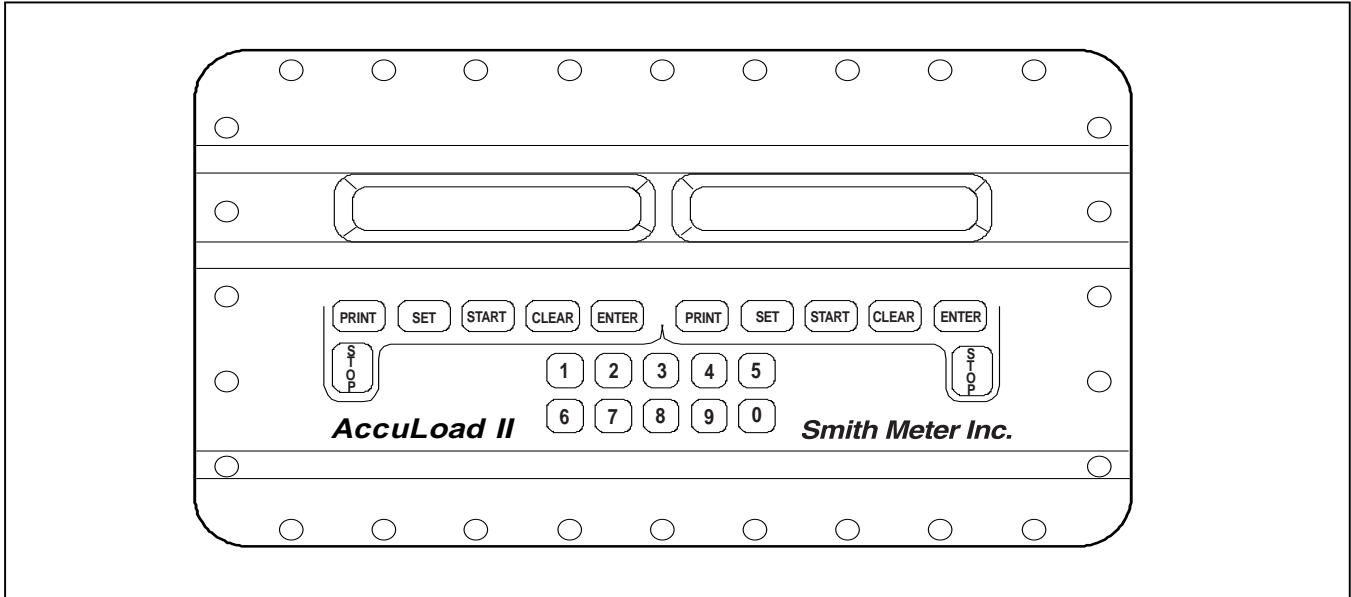
Flow Chart 2
Loading with a Remote Ticket Printer

Section III – Dynamic Displays

This section describes informational displays which can be viewed while in the Run Mode. These displays are "dynamic" in the sense that the displayed values reflect current actual conditions. They will continuously update while being viewed.

A dynamic display is selected by pressing "ENTER", "XX" where XX is the number of the dynamic display

to be viewed. The display will remain displayed for the time period that is entered in program code 106 (00-99 seconds) of the General Purpose Directory. If a "00" is entered, the display will remain until the "CLEAR" button is pressed. The AccuLoad II will continue to function normally while the display is on and other keystrokes may be entered.



Keypad Functions

The pushbuttons on the keypad perform the following functions when accessing the dynamic displays:

Key	Description
0-9	Used to enter the dynamic display number for preset positions 1 and 2.
CLEAR	Used to exit the dynamic display for preset position 1 or 2.
ENTER	Used to enter the dynamic display desired for viewing for preset position 1 or 2 and for sequencing through the displays in order.

Note: The pushbuttons not listed above are not used for viewing the dynamic displays.

Entry to Dynamic Displays

1. To select a dynamic display (i.e., 00) press "ENTER", "00".



2. To step through the dynamic displays press "ENTER".



3. Press "ENTER".



Section III – Dynamic Displays

4. To revert to the preset display press "CLEAR".

200.0 Gal P 1000 800.0

Dynamic Display Reference

00 - Time & Date

The current time and date will be displayed.

9:20:05 AM 10-31-98

01 - Flow Rate (Units/Min)

The current flow rate in units per minute will be displayed.

Note: An "" before the flow rate shows the flow is being controlled lower than selected because back pressure or auto flow control is not sufficient to maintain the desired flow.*

Flow = 600.0 Gal/Min

02 - Flow Rate (Units/Hr)

The current flow rate in units per hour will be displayed.

Note: An "" before the flow rate shows the flow is being controlled lower than selected because back pressure or auto flow control is not sufficient to maintain the desired flow.*

Flow = 3600.0 Gal/Hr

03 - Temperature

The current temperature being measured and used for compensation will be displayed.

Temperature = + 78.5°F

04 - API

The current API being used for compensation will be displayed.

API = + 19.9

05 - Reference Density

The current reference density being used will be displayed.

Ref Density = 933.7

06 - Relative Density

The current relative density being used will be displayed.

Rel Density = 0.9346

07 - Pressure and Vapor Pressure

If used, the current pressure and vapor pressure will be displayed.

P = 45.0 VP = 10.0

08 - Meter Factor

The current meter factor being used to correct the raw volume to the gross volume will be displayed.

Meter Factor = 1.0376

09 - Temperature Correction

The current correction for temperature on liquid factor being used to correct the gross volume to the gross @ standard temperature volume will be displayed.

CTL = 0.9927

10 - Correction for Pressure on Liquid

The current correction factor being used to correct the Gst (gross @ standard temperature) volume to a net volume which is based on the current pressure will be displayed.

CPL = 1.0110

Section III – Dynamic Displays

11 - Density

The current density being used will be displayed.

Density	48.65
---------	-------

12 - Raw Volume

The raw transaction volume that is currently being loaded will be displayed.

Raw Transaction	192.75
-----------------	--------

13 - Gross Volume

The gross volume that is currently being loaded will be displayed.

Grs Transaction	200.00
-----------------	--------

14 - Gross @ Standard Temperature Volume

The gross @ standard temperature compensated volume that is currently being loaded will be displayed.

Gst Transaction	198.54
-----------------	--------

15 - Net Transaction

The net volume that is currently being loaded will be displayed.

Net Transaction	200.72
-----------------	--------

16 - Mass Transaction

The mass that is currently being loaded will be displayed.

Mas Transaction	1669
-----------------	------

17 - Additive Injector #1 Volume

The additive injector #1 transaction volume that is currently being loaded will be displayed.

Inj1 Trans	10.950
------------	--------

18 - Additive Injector #2 Volume

The additive injector #2 transaction volume that is currently being loaded will be displayed.

Inj2 Trans	15.050
------------	--------

19 - Additive Injector #3 Volume

The additive injector #3 transaction volume that is currently being loaded will be displayed.

Inj3 Trans	20.950
------------	--------

20 - Additive Injector #4 Volume

The additive injector #4 transaction volume that is currently being loaded will be displayed.

Inj4 Trans	13.950
------------	--------

21 - Valve Position

The status of the current valve position will be displayed.

Valve Requested Open

22 - Load Average Temperature

The load average temperature for the current transaction will be displayed.

Load Avg Tmp = + 75.0°F

Section III – Dynamic Displays

23 - Load Average Pressure

The load average pressure for the current transaction will be displayed.

Load Avg Pres = 43.0

24 - Load Average Density

The load average density for the current transaction will be displayed.

Load Avg Dens = 48.61

25 - Load Average Meter Factor

The load average meter factor for the current transaction will be displayed.

Flow = 615.0 Gal/Min

26 - Raw Non-resettable Totals

The raw non-resettable totals for the product will be displayed.

Raw Totals 000019846

27 - Gross Non-resettable Totals

The gross non-resettable totals for the product will be displayed.

Grs Totals 000019907

28 - Gross @ Standard Temperature Non-resettable Totals

The gross @ standard temperature non-resettable totals for the product will be displayed.

Gst Totals 000019243

29 - Net Non-resettable Totals

The net non-resettable totals for the product will be displayed.

Net Totals 000016564

30 - Mass Non-resettable Totals

The mass non-resettable totals for the product will be displayed.

Mass Totals 000041903

31 - Additive Injector #1 Non-resettable Totals

The additive injector #1 non-resettable totals for the injected product will be displayed.

Inj1 Total 000001342

32 - Additive Injector #2 Non-resettable Totals

The additive injector #2 non-resettable totals for the injected product will be displayed.

Inj2 Total 000001432

33 - Additive Injector #3 Non-resettable Totals

The additive injector #3 non-resettable totals for the injected product will be displayed.

Inj3 Total 000001032

Section III – Dynamic Displays

34 - Additive Injector #4 Non-resettable Totals

The additive injector #4 non-resettable totals for the injected product will be displayed.

```
Inj4 Total    000000532
```

35 - Input Module Status *

The status of the input modules in the AccuLoad II will be displayed.

```
JOPOWOT1V1H1F1ROYOZ0
```

Where: 0 = Closed
1 = Open
J = Test Points 9 & 10
P = Program Mode
W = Weights & Measures Mode
T = Ticket Printer Tray Switch
V = Valve Stem Switch (04A or 05R)
H = 1st/2nd High Flow Contact
F = Ticket Printer Feedback
R = Valve Power
Y = Spare #1
Z = Spare #2

36 - Contact Output Status (Side 1) *

The status of the contact output modules for side 1 in the AccuLoad II will be displayed.

```
<I1 I1 I1 I1 U1 D1 P1 A1
```

Where: 0 = Closed
1 = Open
I = Injector #1
I = Injector #2
I = Injector #3
I = Injector #4
U = Upstream Solenoid
D = Downstream Solenoid
P = Pump
A = Alarm

37 - Contact Output Status (Side 2) *

The status of the contact output modules for side 1 in the AccuLoad II will be displayed.

```
>I1 I1 I1 I1 U1 D1 P1 A1
```

Where: 0 = Closed
1 = Open
I = Injector #1
I = Injector #2
I = Injector #3
I = Injector #4
U = Upstream Solenoid
D = Downstream Solenoid
P = Pump
A = Alarm

38 - Last Power Failure *

The last time the AccuLoad II experienced a power failure will be displayed.

```
PF: 3:04:36 PM 11-08-89
```

39 - Additive Injector #1 Rate *

The current programmed additive pulse rate for end of batch stopping of the additive pulse output #1 and the recalculated additive pulse output for shutting down at the first trip point will be displayed.

```
INJ1 Prog XXX Cal XXX.XX
```

40 - Additive Injector #2 Rate *

The current programmed additive pulse rate for end of batch stopping of the additive pulse output #2 and the recalculated additive pulse output for shutting down at the first trip point will be displayed.

```
INJ2 Prog XXX Cal XXX.XX
```

Section III – Dynamic Displays

41 - Additive Injector #3 Rate *

The current programmed additive pulse rate for end of batch stopping of the additive pulse output #3 and the recalculated additive pulse output for shutting down at the first trip point will be displayed.

INJ3 Prog XXX Cal XXX.XX

42 - Additive Injector #4 Rate *

The current programmed additive pulse rate for end of batch stopping of the additive pulse output #4 and the recalculated additive pulse output for shutting down at the first trip point will be displayed.

INJ4 Prog XXX Cal XXX.XX

50, 51, 52, 53, 54, 55 - Communications Diagnostics

These real time diagnostics are used to facilitate diagnoses of communication problems while the AccuLoad II is being controlled remotely. For a detailed description of the displays, refer to the AccuLoad II Communications Manual (Bulletin MN06040).

Note: *AccuLoad II-GRK Rev. 04 and above firmware.

Section IV – Programming Mode

Keypad Data Entry

All programming information is entered via the keypad. The program codes for AccuLoad II are divided into nine directories as follows:

Code	Description
100	General Purpose Directory
200	Flow Control Directory
300	Volume Accuracy Directory
400	Temperature & Density Directory
500	Pressure Directory
600	Read Only Data Directory
700	Communications Directory
800	Inputs & Outputs Directory
900	Diagnostics Directory

These directories are then subdivided into three sections. Under program protection are the codes that are low security items or those which do not affect volume accuracy (i.e., the status of the various alarms, accumulative totalizers, date and time and various other read only codes). The second digit of these codes will always be zero through three. The criteria for entering the Program Mode in preset position 1 or 2 and changing a parameter under this protection will consist of the following:

1. The program contact is closed.
2. The access code for the respective preset position has been correctly entered.

The Weights and Measures codes are high-security items or those which are involved in volume accuracy. The second digit of these codes will always be four through seven. The criteria for entering the Program Mode and changing these codes in preset position 1 or 2 will consist of the following:

1. The program contact is closed.
2. The Weights and Measures contact is closed.
3. The access code for the respective preset position has been correctly entered.

Note: These codes can be viewed while program contact is closed but can not be changed.

Program codes that have a second digit of eight can be protected by either the program contact or by both the program contact and the Weights and Measures contact. The security requirements of these codes may vary under various Weights and Measures agencies' guidelines. The criteria for en-

tering the Program Mode and changing these codes in preset position 1 or 2 will vary depending on how code X40 is programmed, where X equals the directory number of the codes.

Under the special High-security Mode of protection are codes whose use may be sensitive under various Weights and Measures agencies' guidelines or affect volume accuracy. The second digit of these codes will always be a nine. The criteria for entering the Special High-security Mode and programming the codes in preset position 1 or 2 will consist of the following:

1. The program contact is closed.
2. The Weights and Measures contact is closed.
3. The access code for the respective meter position has been correctly entered.
4. A board level hardware jumper is installed between TP9 and TP10 on the computer board. These points are located on the lower left half of the board.

Note: The program contact and the Weights and Measures contact are shared by both preset positions.

EXAMPLE 1 - 2 - 1

Where: 1 = Directory Number
 2 = Code Protection
 1 = Number

The pushbuttons on the keypad perform the following functions while the instrument is in the Program Mode:

0 - 9	Used to enter the access code, program codes and data entries for preset positions 1 and 2.
CLEAR	Used for clearing incorrect entries for preset position 1 or 2, getting from a program code to the directory (i.e., code 105 to 100), for getting to an exit point, or used to stop the scrolling display.
ENTER	Used to enter the Program Mode security access code, to enter program data for preset position 1 or 2, and for exiting the Program Mode.

Section IV – Programming Mode

SET	Used for stepping through the program codes in sequence for preset position 1 or 2.
PRINT	Used for Help Messages for preset position 1 or 2.
STOP	Not used in Program Mode.

Entry to Program Mode

1. Close the Program Mode contact (unless already permanently wired closed). This will provide the first step for access to program codes with a second digit of zero through three.

Note: Weights & Measures codes can be viewed but not changed unless the Weights and Measures contact is also closed either before entry into Program Mode or while in the Program Mode.

```
Product Ready  1:10:31
```

2. Press "ENTER", "ENTER". This clears the display.

3. Enter the four digit access code ('0000' preset at factory). For security any digit entered will be displayed as an 'X'.

```
XXXX
```

4. Press "ENTER". This checks for the proper access code. If this is correct, the following will be displayed:

```
Enter Dir or Program #
```

Note: If an incorrect access code was entered, the following prompt will appear:

```
** Error Press Clear **
```

5. Press "CLEAR". The display will return to "READY".

```
Unleaded Ready  1:10:31
```

6. Repeat Steps 2, 3 and 4 to re-enter the Program Mode.

Program Directory Selection

Once in the Program Mode the directories can be accessed either by a three digit code or by pressing "SET" "SET". This action will enter the instrument into the first program directory. The other directories can then be stepped through sequentially by continuing to press "SET".

Specific Directory Selection

To enter the directory using its three digit program code the following steps have to be observed:

1. The following prompt is displayed when entry is made into the Program Mode:

```
Enter Dir or Program #
```

2. Enter the directory number required (i.e., 200).

```
Enter Dir or Program 200
```

Note: If an error is made when entering the number of the directory required the "CLEAR" button can be pressed to clear the wrong number and a new number can then be entered.

3. Press "ENTER".

```
200 Flow Control Dir
```

4. Press "CLEAR" to get to the exit prompt.

```
Press Enter to Exit
```

5. Press "CLEAR" again to get to the directory entry prompt.

```
Enter Dir or Program #
```

Section IV – Programming Mode

6. Enter the new directory number (i.e., 400).

```
Enter Dir or Program 400
```

7. Press "ENTER".

```
400 Temp & Density Dir
```

Sequential Directory Selection

To enter the directory using the "SET" button the following steps have to be observed:

1. The following prompt is displayed when entry is made into the Program Mode:

```
Enter Dir or Program #
```

2. Press "SET" to get the exit prompt.

```
Press Enter to Exit
```

3. Press "SET" again and the first directory will be displayed.

```
100 General Purpose Dir
```

4. Press "SET" again and the second directory will be displayed.

```
200 Flow Control Dir
```

5. Press "SET" again and the third directory will be displayed.

```
300 Volume Accuracy Dir
```

Repeat step 5 until the directory required is reached.

Exiting A Directory

To exit a directory and to enter the next directory follow the steps listed below.

1. From the last program code in the directory.

```
190 0 Meter Enabled
```

2. Press "SET".

```
Press Enter to Exit Dir
```

3. Press "ENTER".

```
200 Flow Control Dir
```

Program Code Selection

Once in the Program Mode, the codes can be accessed either by the three digit number, going to the directories and then into the code using the second and third digits, or sequentially once in the program codes.

Note: Weights & Measures codes can be viewed but not changed unless the Weights and Measures contact was closed before entry into the Program Mode.

1. From the entry to the Program Mode.

```
Enter Dir or Program #
```

2. Enter the desired program code using the keypad (i.e., 106).

```
Enter Dir or Program 106
```

3. Press "ENTER".

```
106 00 Dynamic Time-out
```

Section IV – Programming Mode

4. If another code is required press "CLEAR". The following display will appear:

```
100 General Purpose Dir
```

5. Press "CLEAR" again.

```
Press Enter to Exit
```

6. Press "CLEAR" again.

```
Enter Dir or Program #
```

7. Enter the new code (i.e., 210).

```
Enter Dir or Program 210
```

8. Press "ENTER".

```
210 0000 1st Trip Point
```

Note: If a code that is currently unassigned (e.g., '135') is entered, the following prompt will appear:

```
135 Invalid Program Code
```

Second and Third Digit Selection

If it is desired to review or change a code that is in same directory that has been accessed, the following steps should be followed:

1. From the directory.

```
200 Flow Control Dir
```

2. Press "ENTER".

```
200 Enter Program #
```

3. Enter the second and third digit of the code required (i.e., 10).

```
200 Enter Program 10
```

4. Press "ENTER".

```
210 0000 1st Trip Point
```

5. To access another code in the same directory, press "CLEAR" to get back to the directory.

```
200 Flow Control Dir
```

6. Press "ENTER".

```
200 Enter Program #
```

7. Enter the second and third digit of the code required (i.e., 41).

```
200 Enter Program 41
```

8. Press "ENTER".

```
241 0 No Valve Security
```

Repeat steps five through eight for each code to be accessed.

Sequential Code Selection

If it is desired to review the codes in numerical sequence, press "SET" to advance by one code rather than entering the program code.

1. From the Entry into the Program Mode.

```
101 No Alarms Present
```

2. Press "SET" ...

```
102 No Alarms Present
```

3. Press "SET" ...

```
103 No Alarms Present
```

Section IV – Programming Mode

4. Press "SET" again ...

104 1:50 AM Time

5. Press "SET" again ...

105 01-05-91 Date

Etc. ...

Note: When using this method of stepping through the program codes, the instrument will skip invalid codes and only display the valid codes.

EXAMPLE:

107 0 Flash No Totals

Press "SET".

140 0 Weights & Measures

Note: If "SET" is pressed and held AccuLoad II will scroll through the program codes.

Exiting Program Mode

To return to the Run Mode, either open the Program Mode contact and press "SET" or follow the steps listed below.

1. From the program code or directory.

200 Flow Control Dir

2. Press "CLEAR".

Press Enter to Exit

3. Press "ENTER".

UNLEADED Ready 17:33:33

Changing Program Code Parameters

The program codes represent parameters that can be changed to either enhance the performance of AccuLoad II or can be changed because of application changes. There are three types of parameters in AccuLoad II, the codes that require numerical data, the codes where choices have to be made on option 1, 2, 3 etc., and the codes where alphanumeric data is entered. Once a code has been selected, change its programmed contents by entering a new value through the keypad.

Numeric Data

The numeric data is entered via the keypad just as numbers are entered on a calculator. The number of digits for each entry is listed in the Programming Workbook and the Operator Reference Guide.

EXAMPLE: To change the parameters for the high flow rate:

1. View the contents of code 207 via one of the methods previously described.

207 0600 High Flow Rate

2. To specify a new First High Flow Rate enter the rate required (i.e., 1800).

207 0600 High Flow R 450

3. Press "ENTER" to store the new value, the display will read as follows while data is being stored:

207 ** STORING DATA **

4. After the data is stored, the display will then read:

207 0450 High Flow Rate

Note: If an incorrect value is entered on the screen and has not been stored, the value can be cleared by pressing "CLEAR" twice and a new value can then be entered.

Section IV – Programming Mode

Options

The codes that have several options (i.e., 1, 2, 3, etc.) are changed by entering the number that correlates to the option that is required for the application. The options available are listed in the Programming Workbook and in the Operator Reference Manual.

EXAMPLE: To change the parameters for the transaction control:

1. View the contents of code 301 via one of the methods previously described.

```
301 0 Local Tray Switch
```

2. To specify a different option, enter the new one digit number of the option desired (i.e., 1).

```
301 0 Local Tray Switch1
```

3. Press "ENTER" to store the new option, the display will read **** STORING DATA **** while the new option is being stored.

```
301 ** STORING DATA **
```

4. After the data is stored the display will then read:

```
301 1 Print Key
```

Note: An entry other than "0" through "4" will result in an error message being scrolled across the display "Fatal: Entry is out of specified range". Press "CLEAR" to stop the scrolling message and to return to the original display. Press "CLEAR" again to clear the number that was in error and then retry.

Alphanumeric Data

The codes that require alphanumeric data entered in them are the codes that will display Product Messages, Prompt Messages or Permissive Messages on the displays of AccuLoad II. They will provide information to be printed out on the Bill of Lading Emulation. When adding or changing information in these alphanumeric program codes, the keys listed below perform the following functions:

Key	Description
"ENTER"	Enters the data into the instrument's memory.
"1"	Positions the cursor so that it is pointing at the character to be changed or added.
"2"	Increments the character one position.
"3"	Decrements the character one position.
"4"	Increments the character from one block of characters to another (Ex: changing from uppercase letters to lowercase letters). The blocks of characters that are available in the AccuLoad II are as follows:

- A B C D E F G H I J K L M N O P Q R S T U V
W X Y Z
- a b c d e f g h i j k l m n o p q r s t u v w x y z
- 0 1 2 3 4 5 6 7 8 9
- + ! " # \$ % & ` () , - . / : ; < = > @ [\ ^ _ ' { | } ° ?
* space

1. View the contents of code 181 via one of the methods previously described.

```
181          = PROD MSG
```

2. To change/add information press "1". This will position the cursor so that it is pointing to the position to be changed.

```
181 <          = PROD MSG
```

3. To add the description "Unleaded" as the Product Message press "4". This will advance the blocks of characters to "A".

```
181 A<          = PROD MSG
```

Section IV – Programming Mode

4. Press "4" to advance the blocks of characters to "a".

```
181 a< = PROD MSG
```

5. Press "3" to decrement the character.

```
181 z< = PROD MSG
```

6. Repeat step 5 until the desired letter is displayed "U".

```
181 U< = PROD MSG
```

7. Press "1" to move the cursor to the next position.

```
181 U< = PROD MSG
```

8. Press "4" until the group of characters that is desired is displayed (i.e., 0).

```
181 U0< = PROD MSG
```

9. Press "3" to decrement the character.

```
181 Uz< = PROD MSG
```

10. Repeat step 9 until the desired letter is displayed "n".

```
181 Un< = PROD MSG
```

11. Press "1" to move the cursor to the next position.

```
181 Un< = PROD MSG
```

12. Press "4" until the group of characters that is required is displayed (i.e., a).

```
181 Una< = PROD MSG
```

13. Press "2" to increment the character.

```
181 Unb< = PROD MSG
```

14. Repeat step 13 until the desired letter is displayed "l".

```
181 Unl< = PROD MSG
```

15. Continue advancing and changing/adding characters until the desired message is displayed.

```
181 Unleaded = PROD MSG
```

16. Advance the arrow (press "1") until only the message is displayed. The arrow will wrap if "1" is continued to be pressed.

```
181 U<leaded = PROD MSG
```

17. Press "ENTER" to store the message. The display will read as follows while the data is being stored:

```
181 ** Storing Data **
```

18. After the data is stored the display will then read:

```
181 Unleaded = PROD MSG
```

Note: If "ENTER" is not pressed, the data will not be stored in memory and will revert to the previous display.

Section IV – Programming Mode

Viewing the Help Messages

The AccuLoad II features unique Help Messages which allow the operator to have at his fingertips the ability to review what is required or what the options are for an individual program code by simply pressing the "PRINT" key while in the Program Mode. The Help Messages will scroll across the display when the "PRINT" key is pressed. The message will continue to scroll across the display until the "CLEAR" key is pressed.

EXAMPLE: To view the Help Message for program code 301 (Transaction Control):

1. View the contents of code 301 via one of the methods previously described.

```
301 0 Local Tray Switch
```

2. To view the Help Message press the "PRINT" key. The message will scroll across the display.

```
Select method of Transac
```

```
tion Control: Remote, Lo
```

```
cal, Print.
```

3. To return to the program code, press the "CLEAR" key.

```
301 0 Local Tray Switch
```

Note: A description of the content and range of entries for the individual codes can be found in the Operator Reference Manual.

Section V - Index

A

Additive Injector #1 Rate, 18
Additive Injector #2 Rate, 18
Additive Injector #3 Rate, 19
Additive Injector #4 Rate, 19
Additive Injector Selection, 6
 Stand-Alone Mode, 6
 Standby Mode, 7
Additive Monitoring, 6

B

Blank Downcounter, 9

C

Changing Program Code Parameters, 24
 Alphanumeric Data, 25
 Numeric Data, 24
 Options, 25
Communications
 EIA-232, 1, 7
 EIA-485, 1, 8
Communications Diagnostics, 19
Control Functions, 2
 Additive Injection, 2
 Alarm Control, 2
 Automatic Adjustment Of Final Trip Point, 2
 Back Pressure Control, 2
 Pump Control, 2
 Valve Control, 2

D

Displays, 3
 Alternating, 9
Dynamic Displays, 1
Dynamic Displays
 00 - Time & Date, 15
 01 - Flow Rate (Units/Min), 15
 02 - Flow Rate (Units/Hr), 15
 03 - Temperature, 15
 04 - API, 15
 05 - Reference Density, 15
 06 - Relative Density, 15
 07 - Pressure And Vapor Pressure, 15
 08 - Meter Factor, 15
 09 - Temperature Correction, 15
 10 - Correction For Pressure On Liquid, 15
 11 - Density, 16
 12 - Raw Volume, 16
 13 - Gross Volume, 16

14 - Gross @ Standard Temperature Volume, 16
15 - Net Transaction, 16
16 - Mass Transaction, 16
17 - Injector #1 Volume, 16
18 - Injector #2 Volume, 16
19 - Injector #3 Volume, 16
20 - Injector #4 Volume, 16
21 - Valve Position, 16
22 - Load Average Temperature, 16
23 - Load Average Pressure, 17
24 - Load Average Density, 17
25 - Load Average Meter Factor, 17
26 - Raw Non-Resettable Totals, 17
27 - Gross Non-Resettable Totals, 17
28 - Gross @ Standard Temperature Non-
 Resettable Totals, 17
29 - Net Non-Resettable Totals, 17
30 - Mass Non-Resettable Totals, 17
31 - Additive Injector #1 Non-Resettable Totals,
 17
32 - Additive Injector #2 Non-Resettable Totals,
 17
33 - Additive Injector #3 Non-Resettable Totals,
 17
34 - Additive Injector #4 Non-Resettable Totals,
 18
35 - Input Module Status, 18
36 - Contact Output Status (Side 1), 18
37 - Contact Output Status (Side 2), 18
38 - Last Power Failure, 18, 19
Entry To Dynamic Displays, 14
Keypad Functions, 14

E

Entry To Program Mode, 21
Environmental, 2
Exiting A Directory, 22
Exiting Program Mode, 24

F

Final Stage Trip, 10
First Stage Trip, 10

H

Help Messages, 27

L

Literature
Local Ticket Printer, 9

Section V – Index

M

Maximum Preset Volume, 9
Meter Position Disabled/Not Installed, 5
Minimum Preset Volume, 9

P

Power Failure, 10
Preset Volumes, 4
Product Delivery, 4
Program Code Selection, 22
 Second And Third Digit Selection, 23
 Sequential Code Selection, 23
Program Directory Selection, 21
 Sequential Directory Selection, 22
 Specific Directory Selection, 21

Q

Quad OPV, 6

R

Remote Start/Stop, 6
Remote Ticket Printer, 11
Run Mode, 4
 Keypad Functions, 4

S

Security, 3
 High-Security, 20
 Low Security, 20
 Special High-Security, 20

Section VI – Related Literature

The following literature can be obtained from the Smith Meter Literature Department. Please reference the appropriate bulletin number and title when ordering.

Smith Meter Inc.
1602 Wagner Avenue
P.O. Box 10428
Erie, Pennsylvania 16514

AccuLoad II-GRK

Specifications	Bulletin SS06012
Installation	Bulletin MN06037
Operator Guide	Bulletin MN06041
Operator Reference (Release 1)	Bulletin MN06038
Operator Reference (Release 2)	Bulletin MN06050L
Program Workbook (Release 1)	Bulletin AB06023
Program Workbook (Release 2)	Bulletin AB06029
Communications	Bulletin MN06040L

Load Printer

Specifications	Bulletin SS06004
Installation/Operation	Bulletin MN06010
Service Bulletin MN06009	

Valves

Model 210 Specifications	Bulletin SS03009
Model 210 Installation/Operation	Bulletin MN03010
Model 215 Specifications	Bulletin SS03010
Model 215 Installation/Operation	Bulletin MN03006
Model 215 Service	Bulletin MN03007

Revisions included in MN06062 Issue/Rev. 0.1 (11/98):
Added Program Codes 146, 367, 467, and 762 in Section V
Converted document from WordPerfect to Word format
Omitted Greek language references

The specifications contained herein are subject to change without notice and any user of said specifications should verify from the manufacturer that are currently in effect. Otherwise, the manufacturer assumes no responsibility for the use of specifications which may have been changed and are no longer in effect.

Headquarters	1602 Wagner Ave., P.O. Box 10428, Erie, PA 16514-0428, Phone: 814/898-5000, Fax: 814/899-8927, Telex: 19-9902,
Smith Systems Oper.	737 North Padre Island Dr., P.O. Box 4658, Corpus Christi, TX 78469, Phone: 512/289-3400, Fax: 512/289-1115, Telex: 650/601-2865
E. Hemisphere Oper.	Smith Meter GmbH, Regentstrasse, P.O. Box 1164, 25470 Ellerbek, Germany, Phone: (49) 4101-3040, Fax: (49) 4101-304133, Telex: 17410134
Sales Offices:	
Houston	6677 North Gessner, Suite 315, Houston, TX 77040, Phone: 713/510-6970, Fax: 713/510-6972, Telex: 6975810
Los Angeles	19802 Terri Drive, Canyon Country, CA 91351, Phone: 805/250-1033, Fax: 805/298-3112
Dubai	Al Moosa Tower, 17th Floor, Box 3228, Dubai, United Arab Emirates, Phone: (97) 1/4313-646, Fax: (97) 1/4310-950
London	Ambassador House, 181 Farnham Road, Slough SL1 4XP, Berkshire, England, Phone: (441) 753-571515, Fax: (441) 753-529966, Telex: 846765
Barcelona	Via Augusta, 125, Desp. 1-7a, E-08006 Barcelona, Spain, Phone: (34) 3 201-0989, Fax: (34) 3 201-0576, Telex: 98375
Singapore	FMC Southeast Asia Pte Ltd., 149 Gul Circle, Singapore 629605, Box 236, Jurong Town Post Office, Singapore 916108, Phone: (65) 869-0605, Fax: (65) 861-2401
Moscow	Smith Meter International Ltd., 3rd Samotechny Per., 11, 103473 Moscow, Russia, Phone: 7 (502) 225-8705, Fax: 7 (502) 221-4066
Beijing	604 CITIC Bldg., 19, Jianguo Men Wai DaJie, Beijing 100004, P.R.C., Phone: 011/86-10/6500-2251, 6501-8005 (Dir), Fax: 011/86-10/6512-6857

Printed in U.S.A. © 11/98 Smith Meter Inc. All rights reserved. MN006062L Issue/Rev. 0.1 (11/98)



Smith Meter Inc...Quality...From Concept, to Product, to You.