

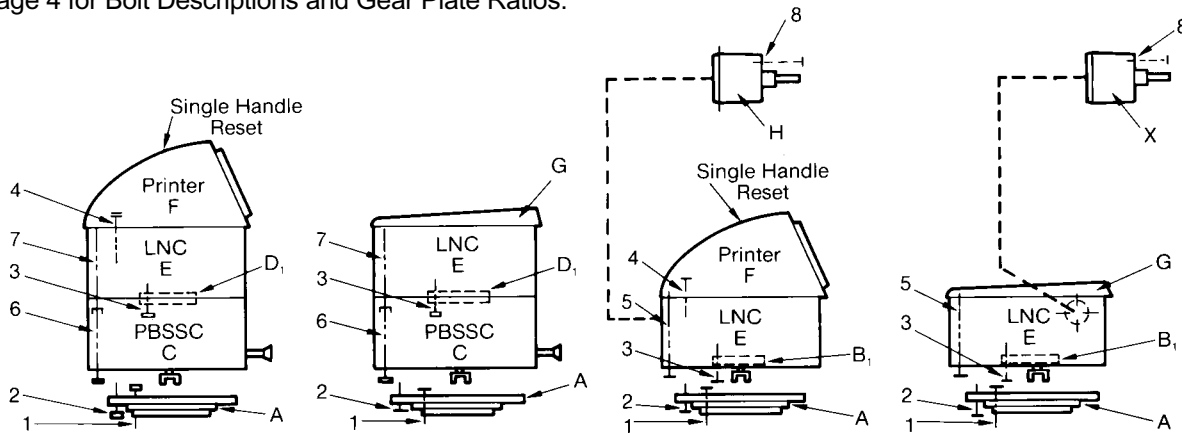
### Standard LNC, TP, and PBSSC Adaptations

#### Character Key

Modules and Gear Plates-Letters Bolts-Numbers

See Page 4 for Bolt Descriptions and Gear Plate Ratios.

Figure 1



#### Description

A Smith to V/R Bolt Circle Adapter (3/4" Ht.)  
 B<sub>1</sub> Standard Gear Plate  
 C 300C Series PBSSC  
 D<sub>1</sub> Up/Down Gear Plate  
 E Large Numerical Counter (LNC)  
 F Printer  
 G Cover and Reset Knob

#### Part Number

004649-001  
 640966-401 through -408  
 644398-401 through -403  
 644395-401 through -406 and 644475-401 and -404  
 644393-401 through -405  
 644394-401 through -406  
 644397-401

#### Gasket Number

002536-001

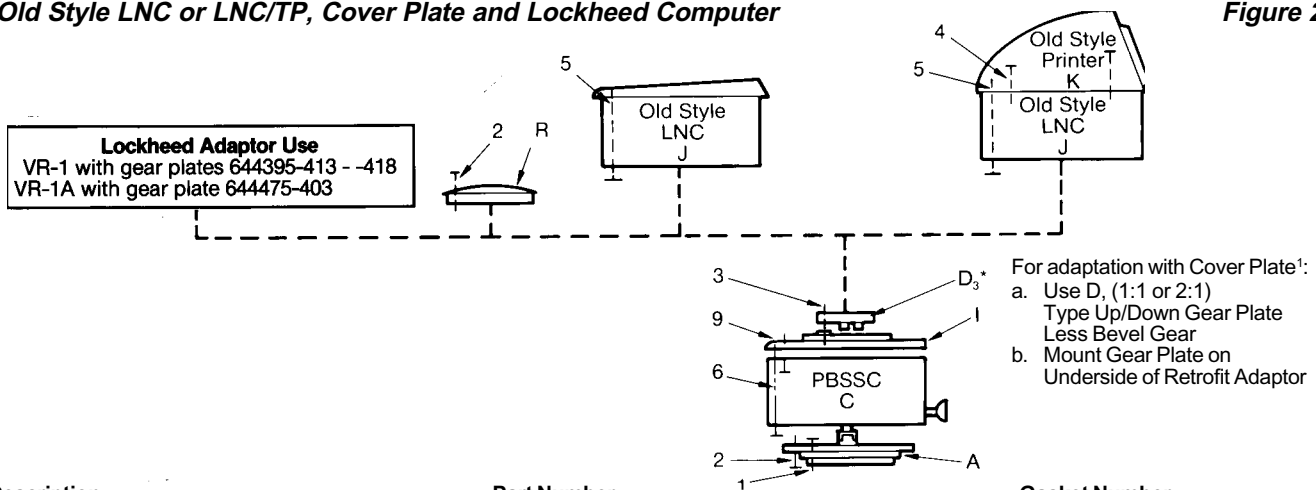
#### Options:

H Tray Actuated Microswitch 644473-401  
 X Transmitter 10 Pulse/Rev 644474-408  
 1 Pulse/Rev 644474-407  
 100 Pulse/Rev 644474-409  
 50 Pulse/Rev 644474-410

### Series 300C PBSSC

#### Old Style LNC or LNC/TP, Cover Plate and Lockheed Computer

Figure 2



**Lockheed Adaptor Use**  
 VR-1 with gear plates 644395-413 --418  
 VR-1A with gear plate 644475-403

For adaptation with Cover Plate<sup>1</sup>:  
 a. Use D<sub>3</sub>, (1:1 or 2:1)  
 Type Up/Down Gear Plate  
 Less Bevel Gear  
 b. Mount Gear Plate on  
 Underside of Retrofit Adaptor

#### Description

A Smith to V/R Bolt Circle Adapter (3/4" Ht.)  
 C 300C Series PBSSC  
 D<sub>3</sub> Up/Down Gear Plate  
 1 Retrofit Adaptor (3/8" Ht.)  
 J Old Style LNC (Less Gear Plate)  
 K Old Style Printer  
 R Cover Plate (For Standalone)

#### Part Number

004649-001  
 644398-401 through -403  
 644395-413 through 418 and 644475-403<sup>1</sup>  
 644400-401  
 -  
 -  
 519917-001

#### Gasket Number

002536-001  
 006949-002

<sup>1</sup> Used with Lockheed only.

## Series 300C PBSSC with Swivel Adaptor

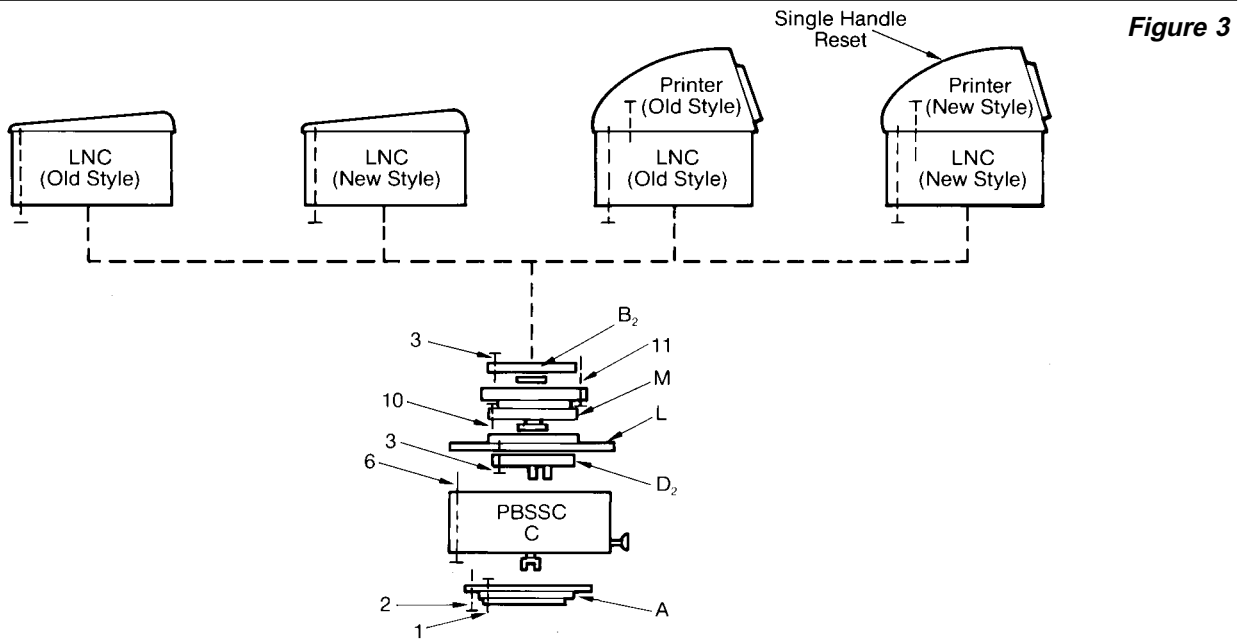


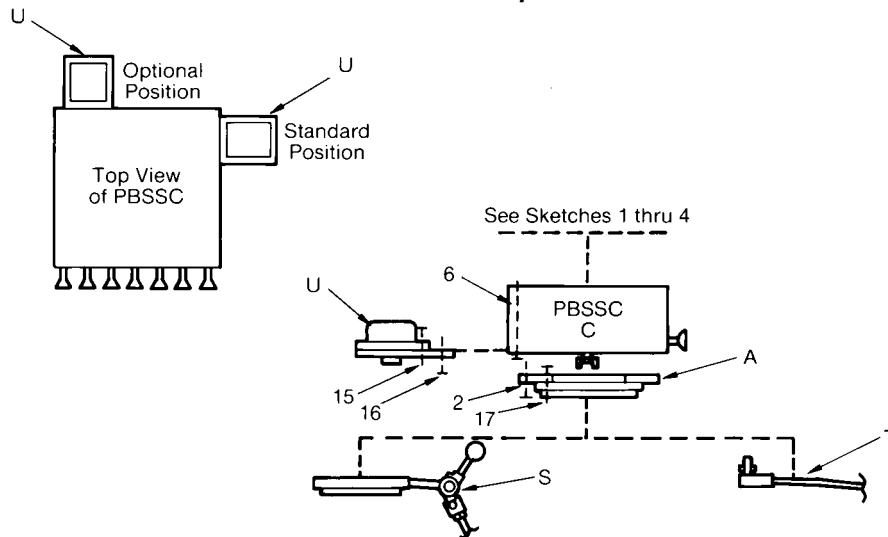
Figure 3

Description	Part Number	Gasket Number
A Smith to V/R Bolt Circle Adapter (3/4" Ht.)	004649-001	002536-001
C 300C Series PBSSC	644398-401 through -403	
D <sub>2</sub> Up/Down Gear Plate	644395-407 through -412 and 644475-402 and -405	
L Standalone Preset Adaptor (1-3/32" Ht.)	644400-402	
M <sup>2</sup> Swivel Adaptor (1-1/4" Ht.) with	640372-001	535398-001
B <sub>2</sub> 1:1 Reversing Gear Plate		

## Series 300C PBSSC

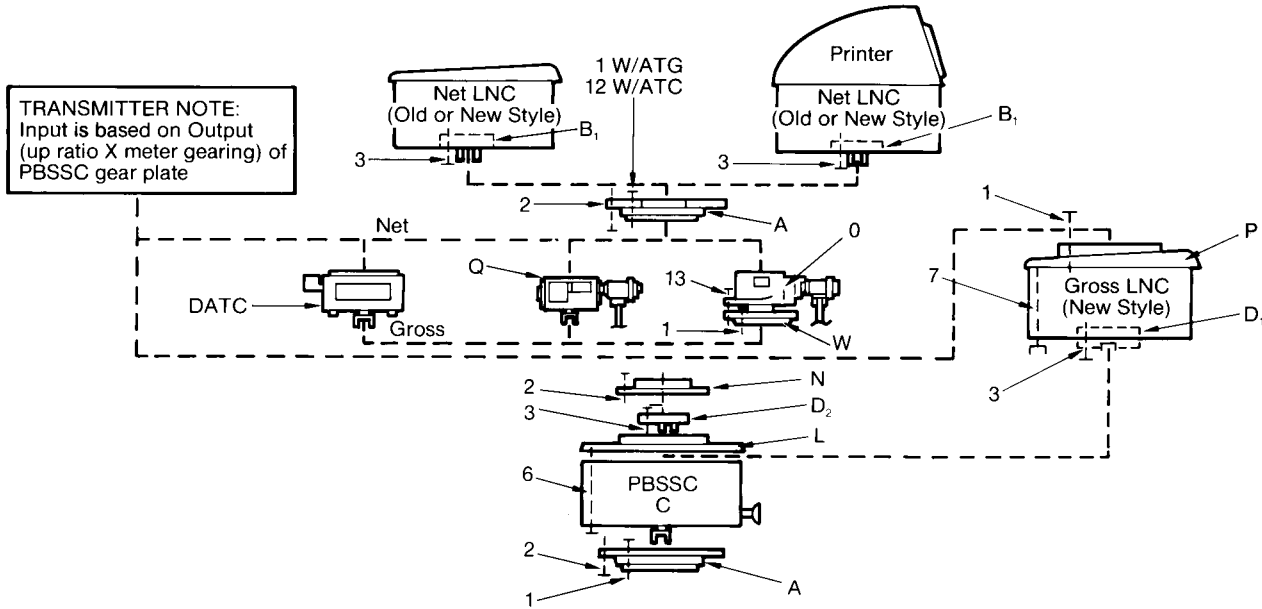
### "T" Meter Set Stop Faucet and Line Meter Mechanical Set Stop Valve

Figure 4



Description	Part Number	Gasket Number
A Smith to V/R Bolt Circle Adapter (3/4" Ht.)	004649-001	002536-001
S Valve Linkage Assembly (5/8" High Either)		
S1 - Straight Through Type Meters	538908-001	002536-001
S2 - Angle Type Meters	538909-001	002536-001
T "T" Meter Linkage Assembly	Included with Faucet	
Options:		
U 2 SPDT Microswitch Kit (Pump Control)	644399-402	
C 300C Series PBSSC	644398-401 through -403	

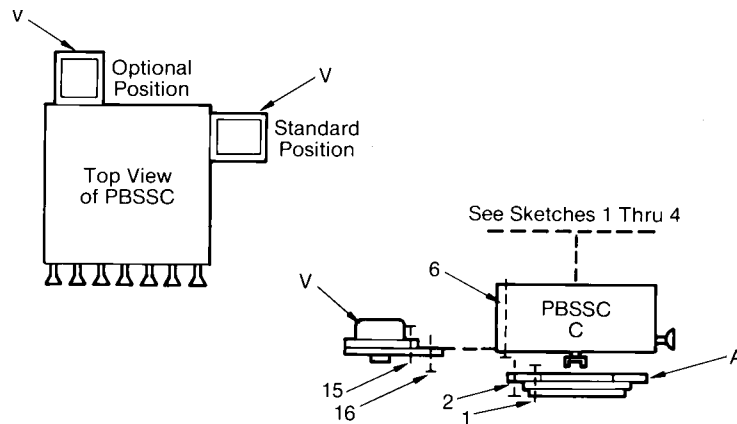
2 Add: Gear Adaptor Kit 539099-001 with D<sub>2</sub> Gear plates 644395-407 through -412.  
Shaft and Coupling Kit 552824-001 with D<sub>2</sub> Gear Plate 644475-402 and -405.



	Description	Part Number	Gasket Number
A	Smith to V/R Bolt Circle Adapter (2 Req.) (3/4" Ht.)	004649-001	002536-001 (2 Req.)
L	Standalone Preset Adaptor (1-3/32" Ht.)	644400-402	
D <sub>2</sub>	Up/Down Gear Plate	644395-407 through -412	
N <sub>1</sub>	PBSSC Accessory Adaptor (Converts V/R to Smith B.C.) (1-1/8" Ht.)	539100-001	006949-002
O	Single Head ATG	-	
W	ATG Adaptor ATG Coupling with "N" Module (with "P" Module)	506201-001 519665-001 (506407-001)	002536-001
Q	Single Head ATC	-	002536-001
B <sub>1</sub>	Standard Gear Plate with 1:1 Gear Ratio	640966-402	
P	Gross LNC Cover Adaptor Kit	519288-001	
D <sub>1</sub>	Up/Down Gear Plate	644395-401 through -406	
C	300C Series PBSSC	644398-401 through -403	

300C Series PBSSC with Electrically Actuated Set Stop Valve

Figure 6



	Description	Part Number	Gasket Number
A	Smith to V/R Bolt Circle Adapter (3/4" Ht.)	004649-001	002536-001
C	300C Series PBSSC	644398-401 through -403	
V	4 SPDT Microswitch and Start Handle Kit	644399-401	

## Bolt List

No.	Part No.	No.	Part No.	
1	Smith to V/R Bolt Circle Adaptor to Meter 4 Fil. Hd. Screws (3/8-16 x 3/4" Lg.) 4 3/8" Shake Proof Lockwashers	006718-002 005791-400	9 Retrofit Adaptor to LNC 4 Hex. Hd. Screws (1/4-28 x 11/16" Lg.) 4 1/4" Shake Proof Lockwashers	503612-004 065369-002
2	Smith to V/R Bolt Circle Adaptor to LNC or PBSSC 4 Hex. Hd. Screws (1/4-28 x 5/8" Lg.) 4 1/4" Shake Proof Lockwashers	065158-003 006825-004	10 Standalone Preset Adaptor to Swivel 4 Hex. Hd. Screws (1/4-28 x 11/16" Lg.) 4 1/4" Shake Proof Lockwashers	503627-085 510003-006
3	Gear Plate (Standard or Up/Down Type) All Variations 2 Flat Fil. Hd. Screws (8-32 x 1/4")	502230-001	11 Swivel to Register 4 Hex. Hd. Screws (1/4-28 x 3/4" Lg.) with Holes 4 1/4" Shake Proof Lockwashers	503645-005 510003-006
4	Printer to Chassis 4 Hex. Hd. Screws (1/4"-28 x 11/16" Lg.) 4 1/4" Shake Proof Lockwashers 4 Hex. Hd. Nut (1/4"-28)	503652-001 510003-006 511019-030	12 Smith to V/R Bolt Circle Adaptor and ATC to PBSSC Accessory Adaptor 2 Fil. Hd. Screws (3/8-16 x 3" Lg.) 2 3/8" Shake Proof Lockwashers	(004649-001) (539100-001) 060106-001
5	LNC to Printer or Cover (without PBSSC) 4 Hex. Hd. Screws (1/4"-20 x 4.312" Lg.) with Wire Hole 4 1/4" Shake Proof Lockwashers	503344-032 510003-006	13 ATG Adaptor to ATG 2 Hex. Hd. Screws (3/8-16 x 1-1/4" Lg.) 2 3/8" Shake Proof Lockwashers	062238-401 060106-001
6	PBSSC to LNC or Adaptor (Retrofit or Standalone) 2 (Front) Hex. Hd. Screws (1/4"-20 x 3-1/6" Lg.) with Wire Hole 2 (Rear) Hex. Hd. Screws <sup>3</sup> (1/4"-20 x 3-1/6" Lg.) 4 1/4" Shake Proof Lockwashers	503300-100 503300-112 510003-006	14 Microswitch to PBSSC 1 Hex. Hd. Screw (1/4-20 x 3.52" Lg.) 1 1/4" Lockwasher	503300-113 510003-006
7	LNC to Printer or Cover (with PBSSC) 4 Special Screws (1/4-20 x 4-3/8" Lg.) 4 1/4" Shake Proof Lockwashers	319944-001 510003-006	15 Microswitch to PBSSC 1 Hex. Hd. Screw (1/4-28 x 3/4" Lg.) 1 1/4" Lockwasher	503619-001 510003-006
8	Tray Actuated Microswitch to LNC 3 Hex. Hd. Screws (1/4-20 x 1/2" Lg.) 3 1/4" Shake Proof Lockwashers	503328-001 510020-001	16 Smith to V/R Bolt Circle Adaptor and Valve Linkage Assembly to Meter 2 Fil. Hd. Screws (3/8-16 x 1-1/2" Lg.) 2 3/8" Shake Proof Lockwashers	060452-002 060106-001

## Gear Plate Ratios

B <sub>1</sub> Standard Gear Plates	1:5- 640966-401	10:1 - 640966-405	D <sub>2</sub> Up/Down Gear Plates for PBSSC with Standalone Preset ADA	1:1 - 644395-407	10:1 - 644395-410
	1:1- -402	42:1 - -406		2:1 - -408	42:1 - -411
	2:1- -403	20:1 - -407		8.4:1 - -409	20:1 - -412
	8.4:1- -404	5:1 - -408		1:1 Up/10:1 Down - 644475-402	
B <sub>2</sub> Reversing Gear Plates (Used with Swivels)	1:1 - Included with Adaptor			1:1 Up/ 2:1 Down - 644475-405	
D <sub>1</sub> Up/Down Gear Plates for PBSSC with LNC	1:1- 644395-401	10:1- 644395-404	D <sub>3</sub> Up/Down Gear Plates for PBSSC with Retrofit ADA	1:1 - 644395-413	10:1 - 644395-416
	2:1- -402	42:1- -405		2:1 - -414	42:1 - -417
	8.4:1- -403	20:1- -406		8.4:1- -415	20:1 - -418
	1:1 Up/ 10:1 Down - 644475-401			1:1 Up/Down 10:1 Down - 644475-403 <sup>4</sup>	
	1:1 Up/ 2:1 Down - 644475-404				
	1:1 Up/ 8.4:1 Down - 644475-407				

<sup>3</sup> When Microswitch Kit (Figure 5 or 6) is included, only one bolt is required.

<sup>4</sup> Only used with Lockheed Adaptor VR - 1A.

Revisions included in AB01026 Issue/Rev. 0.4 (5/05):

Page 4: Revised number 2 under Bolt List.

The specifications contained herein are subject to change without notice and any user of said specifications should verify from the manufacturer that the specifications are currently in effect. Otherwise, the manufacturer assumes no responsibility for the use of specifications which may have been changed and are no longer in effect.

### Headquarters:

1803 Gears Road, Houston, TX 77067 USA, Phone: 281/260-2190, Fax: 281/260-2191

### Gas Measurement Products:

Houston, TX USA Phone 281/260-2190  
 Thetford, England Phone (44) 1842-82-2900  
 Kongsberg, Norway Phone (47) 32/286-700  
 Buenos Aires, Argentina Phone 54 (11) 4312-4736

### Integrated Measurement Systems:

Corpus Christi, TX USA Phone 361/289-3400  
 Kongsberg, Norway Phone (47) 32/286-700  
 San Juan, Puerto Rico Phone 787/274-3760  
 United Arab Emirates, Dubai Phone 971 +4/331-3646

### Liquid Measurement Products:

Erie, PA USA Phone 814/898-5000  
 Los Angeles, CA USA Phone 661/702-8660  
 Slough, England Phone (44) 1753-57-1515  
 Ellerbek, Germany Phone (49) 4101-3040  
 Barcelona, Spain Phone (34) 93/201-0989  
 Moscow, Russia Phone (7) 095/564-8705  
 Melbourne, Australia Phone (61) 3/9807-2818

Beijing, China Phone (86) 10/6500-2251  
 Singapore Phone (65) 6861-3011  
 Chennai, India Phone (91) 44/450-4400

Visit our website at [www.fmcmeasurementsolutions.com](http://www.fmcmeasurementsolutions.com)