

Sening[®] TruckEye[™]

Manage and track your tank truck fleet with
Sening[®] TruckEye[™] Event Viewer



Sening® TruckEye™

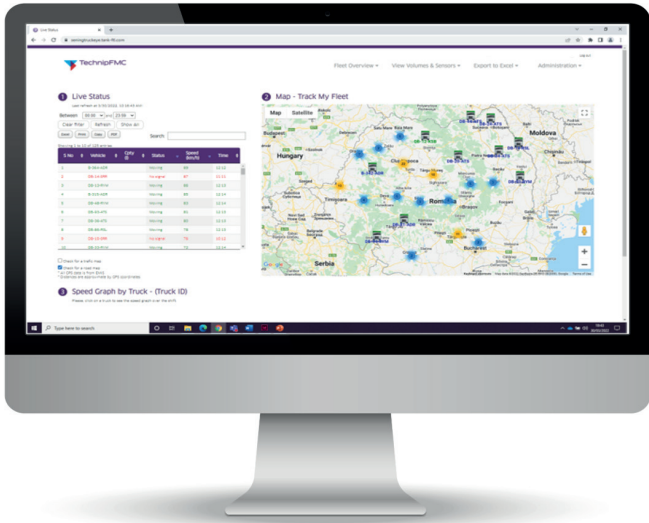
Logistics Managers in Oil Companies, Fleet Operators and Dispatchers need to improve cost and streamline the transportation of liquids in tanker trucks. They need to obtain real time information and prevent or detect loss of product.

TechnipFMC's Sening® TruckEye™ Event Viewer is a scalable, map based, web application, and in combination with the Sening® equipment installed on tanker trucks allows customers to monitor their fleet on a PC or on a smart phone, without the need to install software.

The combination between TruckEye™ and the Sening® equipment installed on the tankers guarantees that all components of the complete Sening® solution have been already tested as a system and are working together as intended. As a result of this, the implementation of a new project runs smoothly and fast for the customer.

- Sening® TruckEye™ Event Viewer provides real time information and extensive reports about:
- ▶ Loaded and unloaded volumes, as measured by the Sening® equipment on the tanker trucks
 - ▶ Operations outside predefined permitted areas
 - ▶ Live and historical overview of the location of tankers on a map, average speed and route driven
 - ▶ Alerts via e-mail for pre-configured scenarios

The solution has been implemented successfully and is used in several countries.



Web Application

No need for installation



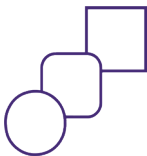
Vehicle Tracking

Understand where your tankers are at any time



Event Alerts

Receive alerts by email



Configurable

Adaptable options to meet your needs



Measurements

Loaded and delivered quantities



Reports

Extensive possibilities to filter, sort and export

Operating Environment and Scalability

The following combinations are possible. The system is flexible and allows for later modifications to upgrade from one combination to a different or more complex one. Solutions are possible in certain cases for existing tanker trucks with fittings from other manufacturers; please contact Sening® to discuss the details of your project.

| | Monitoring Option | Equipment on tanker | | | | | | | | | Trans- mission | Information in TruckEye™ | | | | | | | | | | | | | | | | | | | | | | | | | | | |
|---|-----------------------------|---------------------|----------------------|---|----|---------|---|-------|---|-------------------------|-------------------|--------------------------------|--|------------------|--|------------------|--|-------------------|--|--|--|-------|---|----------------------|---|------------------|---|---------------|---|-------------|---|-------------------------|---|------------------|---|-------------------------------|--|--------------------|--|
| | | MultiTask | MSSPD-N2 or MFSI *** | | | NM2WET2 | | NS-2F | | SPD Sensors or Fittings | | RFID Sensors for cabinet doors | | MultiFlow Legacy | | MultiSeal Legacy | | MultiLevel Legacy | | MultiTask (includes EMIS4 Functionality) | | EMIS4 | | GPS and GSM Antennas | | Current Location | | Average Speed | | Path Driven | | Geofencing* for sensors | | Measured Volumes | | Reports, Export Possibilities | | Electronic Sealing | |
| 1 | Basic | | | | | | | | | | | | | | | | | | | | | 1 | 1 | X | X | X | | | | | | | | X | | | | | |
| 2 | Sensor Monitoring | | 2 | 2 | 12 | 40 | 2 | | | | | | | | | | | | | | | 1 | 1 | X | X | X | X | | | | | | | X | | | | | |
| 3 | MultiFlow | | | | | | | | | 2 | | | | | | | | | | | | 1 | 1 | X | X | X | X | X | X | X | X | X | X | X | | | | | |
| 4 | MultiFlow Sensor Monitoring | | 1 | | | 20 | 2 | 2 | | | | | | | | | | | | | | 1 | 1 | X | X | X | X | X | X | X | X | X | X | X | | | | | |
| 5 | MultiSeal | | 2 | 2 | 12 | 40 | 2 | | 1 | | | | | | | | | | | | | 1 | 1 | X | X | X | X | | | | | | X | X | | | | | |
| 6 | MultiSeal MultiFlow | | 2 | 2 | 12 | 40 | 2 | 2 | 1 | | | | | | | | | | | | | 1 | 1 | X | X | X | X | X | X | X | X | X | X | X | X | | | | |
| 7 | MultiLevel | | | | | | | | | | 1 | | | | | | | | | | | 1 | 1 | X | X | X | | | X | X | X | X | X | | | | | | |
| 8 | MultiSeal MultiLevel | | 2 | 2 | 12 | 40 | 2 | | 1 | 1 | | | | | | | | | | | | 1 | 1 | X | X | X | X | X | X | X | X | X | X | X | X | | | | |
| 9 | MultiTask** | 1 | 2 | 2 | 12 | 40 | 2 | F | F | F | F | | | 1 | | | | | | | | | 1 | X | X | X | X | X | X | X | X | X | X | X | X | | | | |

*Geofencing: alarms for sensor changes, measurements or other predefined events outside geographical areas defined as safe.

**Different combinations possible – MultiTask is a flexible platform that can control the Sening systems

***Max 20 sensors per interface, MFSI is used only for MultiFlow Sensor Monitoring

F stands for “functionality”. For example, MultiFlow functionality included in MultiTask.

The numbers stand for the maximum number of devices that can be installed for a certain option per tanker

NM2WET2: Max 6 sensors per interface

Example of a configuration:

Sensor Monitoring (Option 2 in the table)

Tanker with 4 compartments; bottom loading; discharge via API couplers

1*MSSPD-N2

4*VKV2M-I

4*MANLID20A-SPD

1*NM2WET2

4*NS-2F

1*EMIS4

1*GPS and GSM antennas

1*TruckEye

Please see the price list and Sening® literature for further details about individual components

