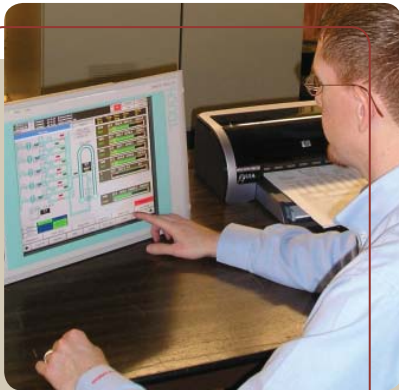


Measurement *CARE*™

System Installation Supervision and Commissioning Services



Everything we do is designed to create long-term value for our customers: accurate measurement, expert service, and reliable performance.

FMC's Measurement *CARE*™ team ensures that systems are installed and commissioned to operate at their highest potential. Our goal is to get each project up quickly and efficiently.

Global Experts for Customer Teams

With more than 2000 installations worldwide, our field service engineers and specialists know the best approaches for all types of environments. We are experts at meeting corporate specifications and local requirements while ensuring optimal, low-cost operation.

FMC Measurement *CARE* Installation Supervision and Commissioning teams are well recognized for working seamlessly with customers and providing hands-on training during the process. Customers tell us that it is like having us on their staff because we see things from their point of view and integrate the system into their overall work environment.

System Installation Supervision and Commissioning Services

Creating Long-Term Value

Comprehensive Measurement CARE Installation Supervision and Commissioning Services include:

- Pre-commissioning checks for proper wiring and piping
- Site management of both equipment and subcontractors
- Supervision of mechanical installation that meets the most stringent operational and safety standards
- Connections to existing systems and apparatus
- Equipment commissioning tests to meet local regulatory requirements
- System commissioning in cooperation with the customer to ensure that the new system works properly within the customer's framework

What differentiates FMC?

It is our extensive experience with all types of systems – our own and OEM – in both onshore and offshore environments, from equatorial jungles to the frozen North. We know when a system should be operated in the shade, whether it should have a compact footprint or occupy only one floor, how to install it to simplify future maintenance and reduce downtime, how to ensure that all systems are as safe as possible, and how to manage a smooth transition to full operation. To complete the Measurement CARE package, we also offer performance verification service, training for operators and/or maintenance personnel (on site or at one of our locations), maintenance and operations contracts, spare parts inventory management (including refurbishment and equipment buy-back), and more.

Passing the Corporate Audit

Customer and System

West African crude oil custody transfer metering system in Angola.

Equipment

Five 12" meter runs in parallel, handling up to 17,000 BPH each, plus a prover-loop system and in-line sampling system, all in accordance with API MPMS standards.

Letter of Appreciation

"All the FMC personnel involved with this project were courteous, understanding, and patient with our National work force when system commissioning began. Our personnel had never been exposed to this type of 'Hi-Tech' measurement system. In the past, we had always relied on tank strappings for their crude custody transfer accounting, which was rated 'unsatisfactory' by an internal corporate audit in 2001. In 2005 (after the new system was installed), another corporate audit yielded a "Satisfactory" rating which is a significant improvement. The metering system provided by FMC was the MAJOR contributing factor to this audit, as well as the training and support provided by FMC in the two years after the system was installed. FMC has provided a great deal of help and support, which is greatly appreciated. FMC is a very professional and, most importantly, 'Qualified' provider of the services so desperately missing within our organization."