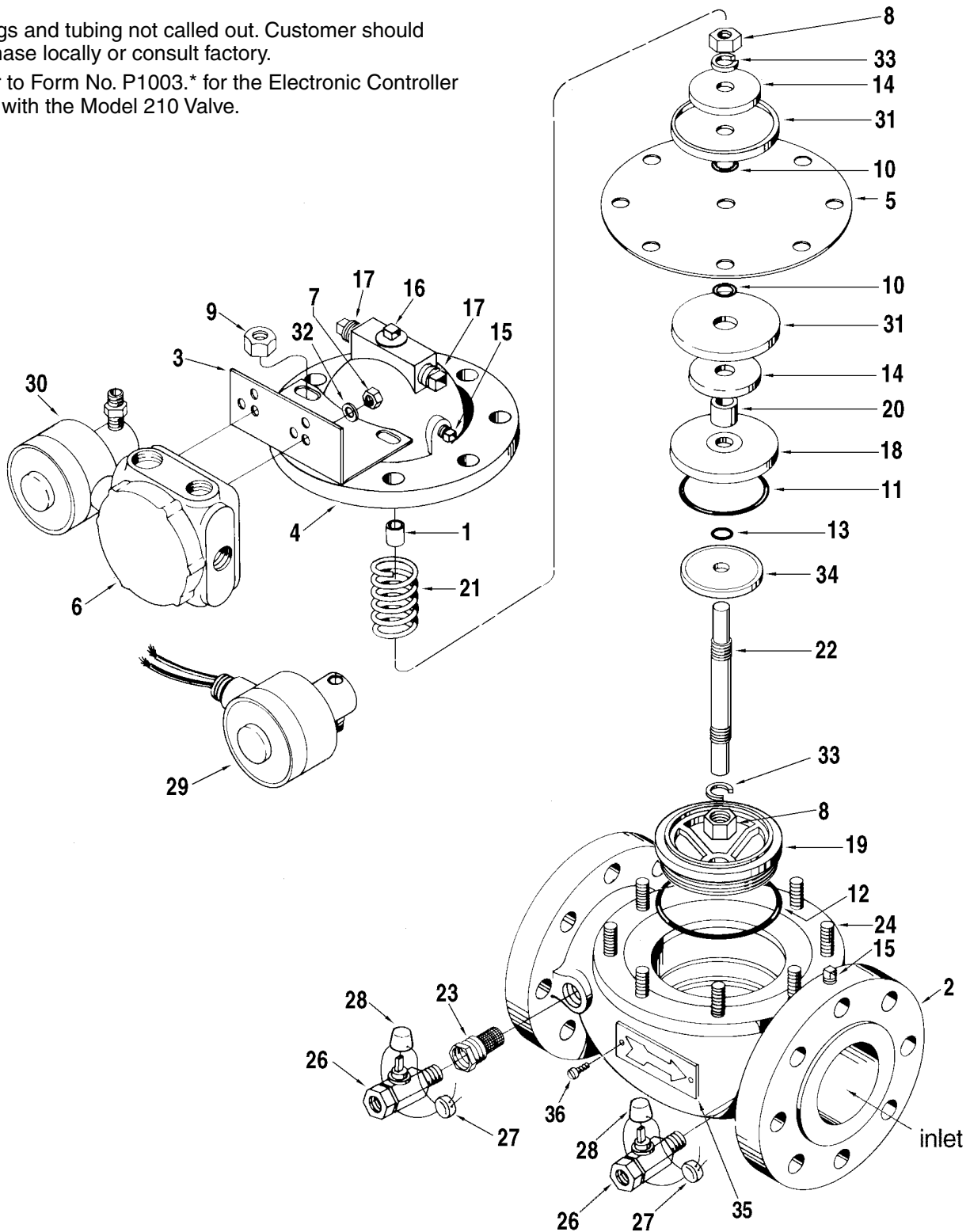


Fittings and tubing not called out. Customer should purchase locally or consult factory.
 Refer to Form No. P1003.* for the Electronic Controller used with the Model 210 Valve.



* The latest edition is indicated by a 2-digit postscript (e.g., .01, .02, etc.).

Item	Description	Qty.	Part Number
1	Bearing, Sleeve: Ni-Resist	1	009971-400
2	Body: Steel, Class 150..... Steel, Class 300.....	1 1	529426-001 529426-002
3	Bracket: Solenoids with Junction Box	1	528452-001
	Required with Option Pilots	1	528453-001
4	Cover Assembly: Standard	1	529425-091
5	+ Diaphragm: Buna-N..... Low Swell Buna	1 1	507391-001 507391-008
	Viton.....	1	507391-002
6	Junction Box.....	1	528495-002
7	Nut, 5/16"-18, UNC-2B.....	2	002876-400
8	Nut, Stem, 1/2"-10, UNF-2B.....	2	640671-001
9	Nut, Stud, 7/16"-14, UNC-2B.....	8	006618-002
10	+ O-Ring, Diaphragm: Buna-N..... Viton.....	2 2	640887-008 640798-414
11	+ O-Ring, Retainer: Low Swell Buna	1	507568-008
	Viton.....	1	507568-003
12	+ O-Ring, Seat: Buna-N..... Viton.....	1 1	640887-423 640798-436
13	+ O-Ring, Stem: Buna-N..... Viton.....	1 1	640913-003 641276-403
14	Plate, Backup: Standard		529437-001
15	Plug, Pipe, 1/8" NPT.....	2	644522-401
16	Plug, Pipe, 1/2" NPT.....	3	006505-002
17	Plug, Pipe, 3/8" NPT.....	2	003131-402
18	Retainer, O-Ring: Ductile Iron - Standard.....	1	507692-003
19	Seat: Bronze	1	528432-002
	Ni-Resist	1	528432-003
	Stainless Steel (with Ni-Resist Bearing)	1	529500-001
20	Spacer: Steel - Standard.....	1	529435-001
21	Spring: Standard	1	507756-001
22	Stem.....	1	529434-001
23	+ Strainer, Model 09SC	1	528341-002
24	Cover Stud: 7/16 - 14 X 1 3/4	6	643823-403
25	* Bracket Stud: 7/16 - 14 x 2 1/4	2	643823-404
26	Valve Assembly, Model 13 (3/8" NPT).....	3	643710-401
27	Needle Seal, Lead, and Wire	1	001627-400
28	Shell.....	1	643706-401
29	@1 Valve, Solenoid, Model 30A N.C.....	1	See Note
30	@1 Valve, Solenoid, Model 30B N.O.....	1	See Note

Item	Description	Qty.	Part Number
31	Washer, Diaphragm: Standard Stainless Steel	2	529436-001
32	Washer, Lock.....	2	002917-400
33	Washer, Lock Spring	2	002788-401
34	Washer, O-Ring: Ductile Iron - Standard.....	1	528914-001
35	Plate, Arrow.....	1	508533-001
36	Screw, 3/16" Drive	2	640813-001

+ Recommended stock.

R Indicates change since last revision.

* Not illustrated.

@1 When ordering, the following information is required:

1. Electrical requirements.
2. Catalog number displayed on the nameplate of the solenoid,
or
3. Log number displayed on the nameplate of the valve body.

Revisions included in P1035.05 Issue/Rev. 0.5 (11/09):
Total Revision.

The specifications contained herein are subject to change without notice and any user of said specifications should verify from the manufacturer that the specifications are currently in effect. Otherwise, the manufacturer assumes no responsibility for the use of specifications which may have been changed and are no longer in effect.

Contact information is subject to change. For the most current contact information, visit our website at www.fmctechnologies.com/measurementsolutions and click on the "Contact Us" link in the left-hand column.

Headquarters:

500 North Sam Houston Parkway West, Suite 100, Houston, TX 77067 USA, Phone: +1 (281) 260 2190, Fax: +1 (281) 260 2191

Gas Measurement Products:

Erie, PA USA +1 (814) 898 5000
Ellerbek, Germany +49 (4101) 3040
Thetford, England +44 (1842) 822900
Kongsberg, Norway +47 (32) 28 67 00
Buenos Aires, Argentina +54 (11) 4312 4736

Integrated Measurement Systems:

Corpus Christi, TX USA +1 (361) 289 3400
Kongsberg, Norway +47 (32) 28 67 00
San Juan, Puerto Rico +1 (787) 772 8100
United Arab Emirates, Dubai +971 (4) 883 0303

Liquid Measurement Products:

Erie, PA USA +1 (814) 898 5000
Los Angeles, CA USA +1 (310) 328 1236
Ellerbek, Germany +49 (4101) 3040
Slough, England +44 (1753) 571515
Barcelona, Spain +34 (93) 201 0989
Moscow, Russia +7 (495) 5648705
Melbourne, Australia +61 (3) 9807 2818

Beijing, China +86 (10) 6500 2251
Singapore +65 6861 3011
Chennai, India +91 (44) 450 4400

Visit our website at www.fmctechnologies.com/measurementsolutions