

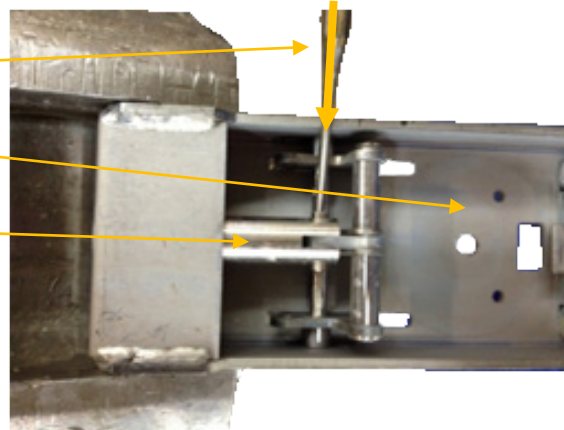
## 1 Modification of manlid locking bolt



### Assembly 1:

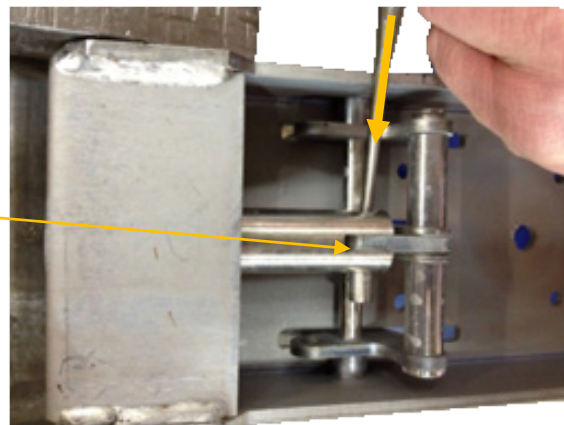
- ▶ Remove bolt (8mm).  
**Important: Drive only from shown side**

- drive direction !
- bracket for fill hatch
- locking bolt



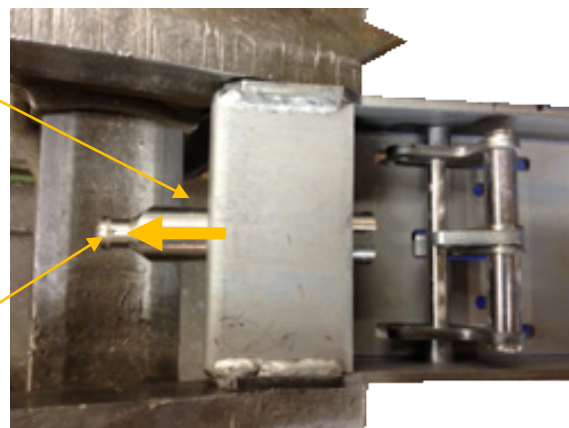
### Assembly 2:

- Remove bolt 8mm



### Assembly 3:

- Remove locking bolt...
- ...and use modified locking bolt

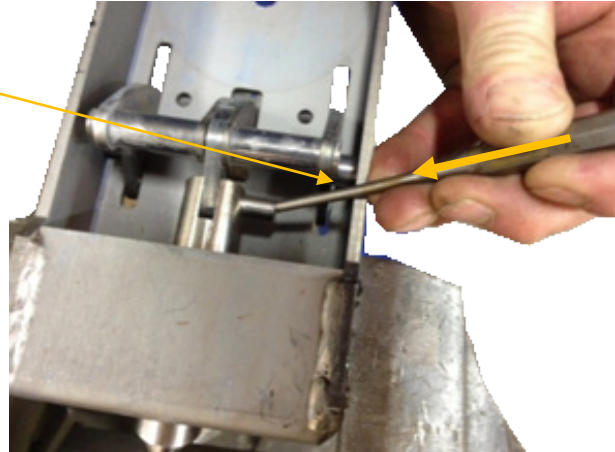




### Assembly 4:

- ▶ Connect new bolt (8mm)  
**Important: Drive only from shown side**

- drive direction !



### Assembly 5:

- bolt fits in center

