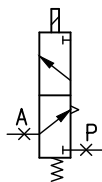
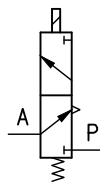


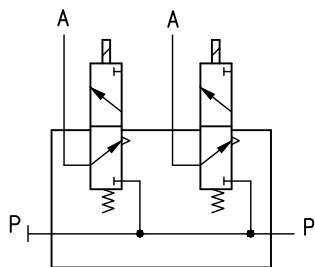
MVS1-E11-12



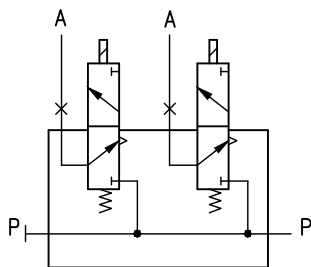
MVS1-E11-122
MVS1-E11-262



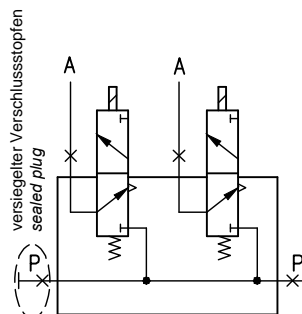
MVS1-S11-12K
MVS1-S11-24K



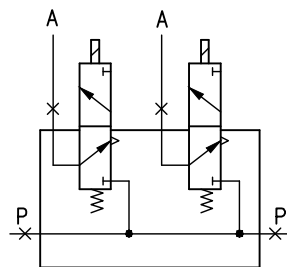
MVS2-E12-12



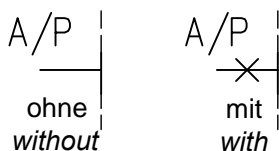
MVS2-E12-122



MVS2-E12-123
MVS2-E12-263



MVS2-E12-124
MVS2-E12-264



Schneidringverschraubungen (z.B. Ermeto) TeileNr.: 5300042
Swirvelling screw-fitting (e.g. Ermeto) Part No.: 5300042

MVxx-xxx-xxx

Optional: Anzahl der anzuschließenden Schneidringverschraubungen (z.B. Ermeto)
K = keine Verschraubung
Optional: Number of swirvelling screw-fittings (e.g. Ermeto)
K = no screw-fitting

Spulenspannung 26 = 24-26 Volt
12 = 12 Volt
Solenoid voltage 26 = 24-26 Volt
12 = 12 Volt

Anzahl der Luftausgänge
Number of air outputs

Anzahl der Luftergänge
Number of air inputs

Schutzart (E=EEEx m II T5; S=Standard)
Explosion protection (E=EEEx m II T5; S=Standard)

Anzahl der Magnetventile
Number of solenoid valves

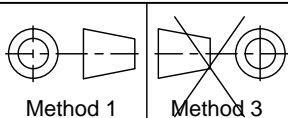
S = Standard (ohne Handbetätigung)
N = Notbetätigung (mit Handbetätigung)
S = Standard (without manual operation)
N = Emergency operation (with manual operation)

Teile-Nr. Part No.:	Gewicht Weight
MVS1-E11-12	0,62 Kg
MVS1-E11-122	0,62 Kg
MVS1-E11-262	0,66 Kg
MVS1-S11-12K	0,16 Kg
MVS1-S11-24K	0,18 Kg
MVS2-E12-12	1,28 Kg
MVS2-E12-122	1,28 Kg
MVS2-E12-123	1,32 Kg
MVS2-E12-263	1,34 Kg
MVS2-E12-124	1,30 Kg
MVS2-E12-264	1,30 Kg

ALL TOLERANCED DIMENSIONS ARE FOR INSTALLATION ONLY.
ALL OTHER DIMENSIONS ARE FOR REFERENCE ONLY.

FMC Technologies

F.A. Sening GmbH, Regentstr. 1, 25474 Ellerbek, Germany



	Date / Datum	Name
Drawn	27.07.2004	Oelting
Checked		

Item name / Benennung
Magnetventile / Solenoid valves
made for / zugehörig zu
Anschlussbilder & Nomenklatur / Connection diagrams & order codes

Scale / Maßst.	1:1
Size / Format	ISO - A4
Weight / Gewicht	kg

Item-No. / Teile-Nr.	
----------------------	--

Drawing No. / Zeichnungs-Nr.
351740_51

Rev.	00B.01	Sheet / Blatt	1
		of / von	1