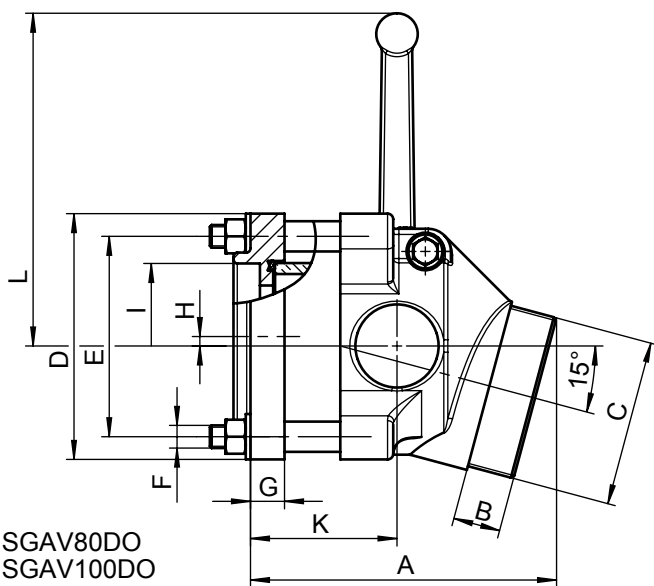
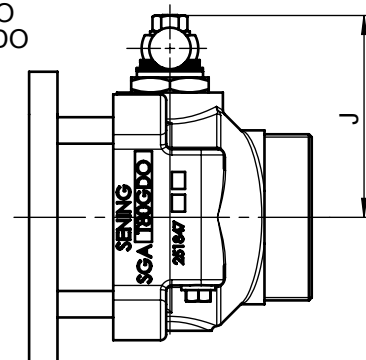


SGAT80DO
SGAT100DO

SGAT80GDO
SGAT100GDO

Werkstoffe:
Aluminium
Borosilicatglas
NBR
Stahl

Material:
Aluminium
Borosilicatglass
NBR
Steel



SGAV80DO
SGAV100DO

SGAV80GDO
SGAV100GDO

SGAV100GDO	163	25	G3"	□130	□106	M12	18	5	Ø111	108	78	176	2,55 kg
SGAV80GDO	163	25	G3"	□130	□106	M12	18	5	Ø91	108	78	176	2,60 kg
SGAV100DO	163	25	G3"	□130	□106	M12	18	5	Ø111	108	78	176	2,55 kg
SGAV80DO	163	25	G3"	□130	□106	M12	18	5	Ø91	108	78	176	2,60 kg
SGAT100GDO	149,5	25	G3"	Ø174	Ø150	Ø14	15	10	--	108	75	176	2,70 kg
SGAT80GDO	149,5	25	G3"	Ø154	Ø130	Ø11,5	15	0	--	108	75	176	2,50 kg
SGAT100DO	160	25	G3"	Ø174	Ø150	Ø14	15	10	--	108	75	176	2,70 kg
SGAT80DO	160	25	G3"	Ø154	Ø130	Ø11,5	15	0	--	108	75	176	2,50 kg
Teile-Nr./ Part-No.	A	B	C	D	E	F	G	H	I	J	K	L	Gewicht Weight

Schauglas-Auslaufstutzen
Sightglass - outlet connection
mit Drossel / with throttle

FMC Technologies

F.A. Sening GmbH
D-25474 Ellerbek, Germany

Weight: kg

Date: 18.01.2011

Name: Larsen

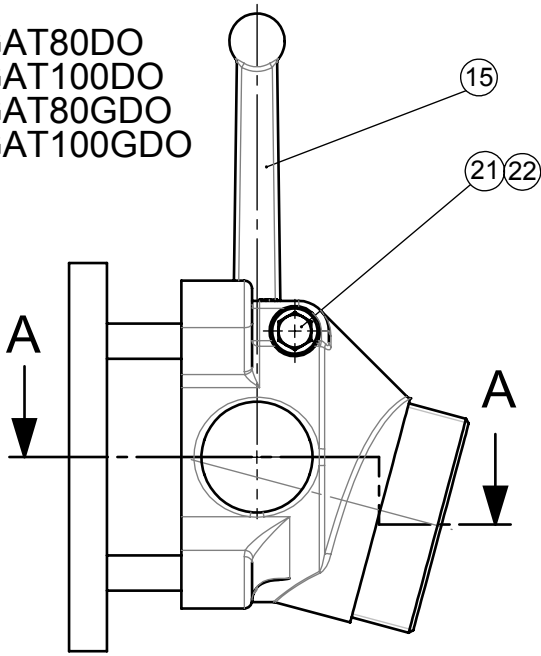
Part-No. SGA...

Changed: 06.07.11

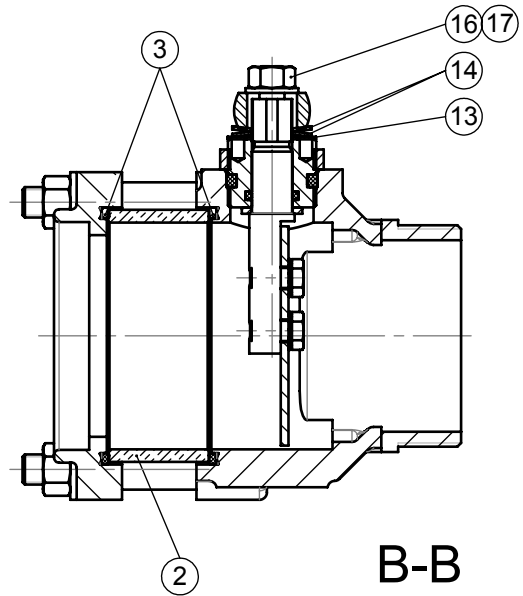
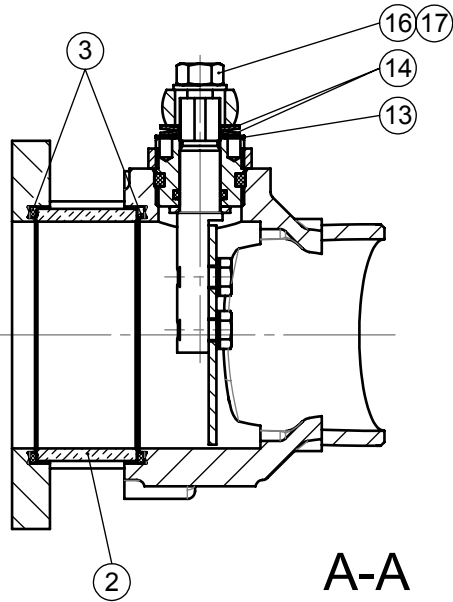
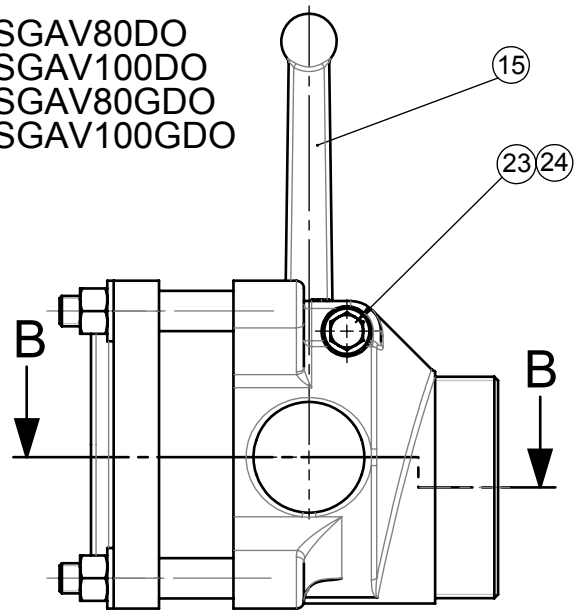
Drawing No.: 53.251876 Bl.2

Rev.: A

SGAT80DO
 SGAT100DO
 SGAT80GDO
 SGAT100GDO



SGAV80DO
 SGAV100DO
 SGAV80GDO
 SGAV100GDO



22(24)	4100091	1	Verschlusschraube G1/4	Screw plug G1/4
21(23)	6300005	1	Dichtring DM13x18x1	Seal DM13x18x1
17	4200041	1	Sechskantmutter M10	Hexagon nut M10
16	4300006	1	Scheibe 10,5	Washer 10,5
15	23171	1	Kugelgriff 90°	Ball handle 90°
14	5200027	2	Tellerfeder 31,5x16,3x1,25 Fed.St.	Cup spring 31,5x16,3x1,25
13	21459	1	Scheibe	Washer
3	6000317	2	O-Ring Ø93x4 NBR	O-ring Ø93x4 NBR
2	251861	1	Glaszylinder	Sightglass cylinder
Pos./Item	Teile-Nr./Part-No.	Stück/Quant.	Benennung	Description

Schauglas-Auslaufstutzen
Sightglass - outlet connection
 mit Drossel / *with throttle*

FMC Technologies

F.A. Sening GmbH
 D-25474 Ellerbek, Germany

Weight: Date: 18.01.2011 Name: Larsen

Part-No. SGA...

Changed: FCN No. 21378 Date: 24.05.11 Name: RL; Drawing No.: 73.251876 Bl.2 Rev.: A